

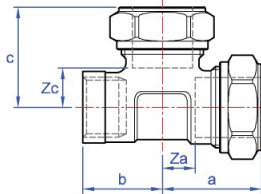
Female end tee. copper x BSP parallel female end x copper branch.



GENERAL INFORMATION

Size	Pattern No.	Box Qty	Code	Barcode	Price (£) ex VAT
22 x 1/2" x 22mm	K930EXPCP	5	43386KC	5022050109712	£56.12
28 x 1/2" x 28mm	K930EXPCP	1	43388KC	5022050109897	£95.58

DIMENSIONS (mm)



Code	Description	a	b	c	za	zc
43386KC	22 x 1/2" x 22mm K930EXPCP	35	28	25	13	3

GUARANTEE

Pegler Yorkshire Kuterlite Guarantee - Terms and Conditions

Products are subject to a guarantee that is between Pegler Yorkshire and the final purchaser of the product. When correctly assembled with the stated tubes and pipe the length of guarantee is as follows:

Kuterlite fittings and valves installed with specified tubes and pipes with the exception of those listed below - 25 years.

Kuterlite Flexifit flexible connectors - 10 years

Kuterlite 600/900 fittings and valves installed with XPress Carbon Steel System tube in sizes up to 28mm - 10 years

Kuterlite 600/900 fittings and valves installed with other manufacturers carbon steel tube to DIN 2394/NEN 1982 in sizes up to 28mm - 5 years

The guarantee is subject to proof of purchase being supplied.

This guarantee does not affect any statutory rights the consumer may have in law.

The guarantee covers manufacturing or material defects when installed in accordance with our instructions on specified tube materials and applications, and does not cover parts subject to normal wear and tear.

This product range has been designed for the use of homeowners, domestic and commercial applications and therefore the Guarantee is subject to the product being properly selected for their intended service conditions.

The guarantee is not applicable where the product is fitted contrary to the conditions in the fitting instructions.

This is reinforced where valves are covered by the European Pressure Equipment Directive (PED97/23/EC) where Installation, Operating and Maintenance Instructions are supplied with each product and/or carton.

Provided it is installed correctly and receives adequate preventative maintenance it should give years of trouble-free service.

Abusive behaviour and accidental damage to the product are not covered by this guarantee.

The extent of this liability is limited to the cost of the replacement of the defective item and not to installation or consequential damages.

APPROVALS



[BSI](#)



[ETA](#)

kiwa

[KIWA_GASTEC](#)

kiwa

[KIWA](#)



[WRAS](#)



[EMI](#)



[CSN](#)