

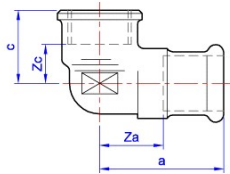


Female elbow. press-fit x parallel female thread.

GENERAL INFORMATION

Size	Pattern No.	Box Qty	Code	Barcode	Price (£) ex VAT
15mm x 1/2"	SG14/G6090G	1	39810	5022050058751	£11.75
15mm x 3/4"	SG14/G6090G	1	39811	5022050058911	£14.46
18mm x 1/2"	SG14/G6090G	5	39808	5022050196859	£17.22
18mm x 3/4"	SG14/G6090G	5	39809	5022050196989	£17.98
22mm x 1/2"	SG14/G6090G	1	39813	5022050059246	£12.81
22mm x 3/4"	SG14/G6090G	1	39814	5022050059628	£17.22
22mm x 1"	SG14/G6090G	1	39812	5022050059079	£21.90
28mm x 1"	SG14/G6090G	1	39815	5022050059888	£28.48
35mm x 1 1/4"	SG14/G6090G	1	39816	5022050060280	£36.74
42mm x 1 1/2"	SG14/G6090G	1	39817	5022050033338	£50.04
54mm x 2"	SG14/G6090G	1	39818	5022050033499	£73.58

DIMENSIONS (mm)



Code	Description	a	c	za	zc
39810	15mm x 1/2" SG14/G6090G	55	26	35	12
39811	15mm x 3/4" SG14/G6090G	63	29	43	22
39808	18mm x 1/2" SG14/G6090G	55	25	34	14
39809	18mm x 3/4" SG14/G6090G	61	29	41	22
39813	22mm x 1/2" SG14/G6090G	56	25	35	13
39814	22mm x 3/4" SG14/G6090G	62	29	25	14
39812	22mm x 1" SG14/G6090G	66	38	45	21
39815	28mm x 1" SG14/G6090G	73	37	50	20
39816	35mm x 1 1/4" SG14/G6090G	83	43	57	23
39817	42mm x 1 1/2" SG14/G6090G	88	46	59	27
39818	54mm x 2" SG14/G6090G	104	55	69	33

PRESSURE & TEMPERATURE

XPress Gas performance when correctly assembled with copper tube to BS EN 1057 R250 and R290‡ (for above ground use only)

XPress Fitting	Tube/pipe used with	Min temperature and pressure	Max temperature and pressure
XPress Copper Gas	Copper	-20° C at 1bar*	70° C at 5bar**

*1bar inside. **5bar outside above ground.

As part of the DVGW approvals process, XPress Gas fittings have passed the HTB leakage rate test at 650°C for 30 minutes.

‡XPress Gas fittings are not suitable for use with soft copper tube (R220).

GUARANTEE

Pegler Yorkshire XPress Copper, Gas, Stainless and Solar fittings Guarantee - Terms and Conditions

Products are subject to a guarantee that is between Pegler Yorkshire and the final purchaser of the product. When correctly assembled with the stated tubes and pipe the length of guarantee is as follows:

25 Years

The Xpress Copper, Gas, Stainless and Solar ranges are guaranteed for 25 years when installed along with other manufacturers' pipeline components conforming to the specified standard.

30 Years

Where pipelines are constructed exclusively from compatible XPress Copper, Gas, Stainless and Solar fittings and tubes, the resulting installations will be deemed XPress Systems and qualify for a 30 year guarantee. Qualifying systems are:

- Xpress Copper fittings and Yorkex* copper tube
- Xpress Gas fittings and Yorkex* copper tube
- Xpress Stainless fittings and stainless steel 316 System tube
- Xpress Solar fittings and Kuterlon* copper tube

* Yorkex and Kuterlon are brand names of Yorkshire Copper Tube/KME Group

The guarantee is subject to proof of purchase being supplied.

This guarantee does not affect any statutory rights the consumer may have in law.

The guarantee covers manufacturing or material defects when installed in accordance with our instructions on specified tube materials and applications, and does not cover parts subject to normal wear and tear.

This product range has been designed for the use of homeowners, domestic and commercial applications and therefore the Guarantee is subject to the product being properly selected for their intended service conditions.

The guarantee is not applicable where the product is fitted contrary to the conditions in the fitting instructions.

This is reinforced where valves are covered by the European Pressure Equipment Directive (PED97/23/EC) where Installation, Operating and Maintenance Instructions are supplied with each product and/or carton.

Provided it is installed correctly and receives adequate preventative maintenance it should give years of trouble-free service.

Abusive behaviour and accidental damage to the product are not covered by this guarantee.

The extent of this liability is limited to the cost of the replacement of the defective item and not to installation or consequential damages.

APPROVALS



[CSN](#)



[KVGB](#)



[DVGW - Gas](#)

kiwa

[KIWA Gastec](#)



[OVGW](#)



[GL Industrial Services](#)



[DG](#)



[BSI](#)