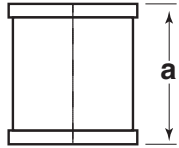


Bronze

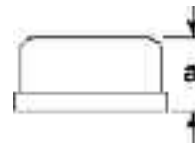
J76 Socket PN16

Parallel thread to
BS 2779 (ISO 228-1)



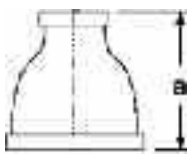
FITTING SIZE (inch)	DIMENSIONS (mm) a	WEIGHT (kg) per 100 pieces
1/8	21	2.48
1/4	25	4.08
3/8	28	5.27
1/2	34	7.21
3/4	39	10.29
1	42	15.45

J85 Cap PN16



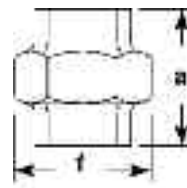
FITTING SIZE (inch)	DIMENSIONS (mm) a	WEIGHT (kg) per 100 pieces
1/4	17	2.69
3/8	22	5.76
1/2	26	5.46
3/4	26	9.14
1	32	14.55

J79 Reducing Socket PN16



FITTING SIZE (inch)	DIMENSIONS (mm) a	WEIGHT (kg) per 100 pieces
3/8 x 1/4	26	4.68
1/2 x 3/8	34	5.87
3/4 x 1/2	37	9.82
1 x 1/2	44	14.69
1 x 3/4	44	15.88

J256 Union PN16



FITTING SIZE (inch)	DIMENSIONS (mm)		WEIGHT (kg) per 100 pieces
	a	f	
1/2	42	42	22.37
3/4	47	49	29.14
1	52	57	42.35
1 1/4	56	69	67.18
1 1/2	62	76	86.31
2	65	92	135.45

Every effort has been made to ensure that the information contained in this publication is accurate at the time of publishing. Crane Ltd assumes no responsibility or liability for typographical errors or omissions or for any misinterpretation of the information within the publication and reserves the right to change without notice.