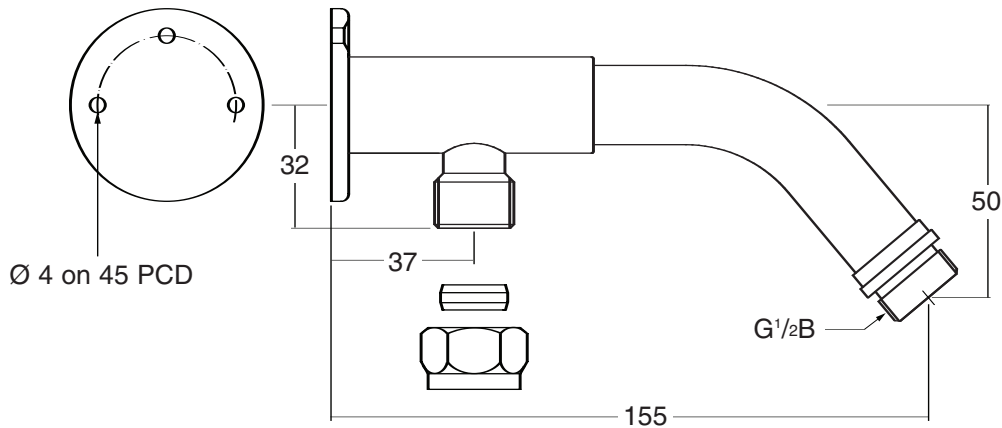


## IN904CP Bottom Entry Shower Arm



### Location

The shower arm should be mounted on a tiled wall or similar water proof surface, never tile up to the shower arm.

Choose the position of the shower to suit the tallest user, which will be approximately 2m to 2.2m from the floor of the shower to the centre of the mounting flange.

The shower arm should be fitted directly above the shower control valve so that the supply pipe from the shower valve to the arm is vertical and in line.

The shower arm must not be positioned where it may be subjected to freezing conditions.

### Installation Instructions

Using the shower arm as a template mark the position of the three mounting holes on the wall or use them to drill pilot holes into the wall. Ensure that the two holes are on the horizontal centre line and the arm bends down vertically.

Drill and plug the wall and secure with chrome plated counter sunk head screws. If the wall is plaster board or soft building block use special wall plugs obtainable from most DIY stores.

### Supply Pipe

The supply pipe from the shower valve will be exposed and will be inline vertically to the shower arm.

The exposed copper pipe should be chrome plated, 15mm diameter to BS EN 1057 condition R250 (half hard).

To keep the supply pipe parallel to the wall offsets may be required at one or both ends. For additional security the pipe should be offset to suit a pipe bracket or saddle band which should be fitted at the mid point.

Using the compression nuts and olives provided, make water tight joints at the shower arm and at the shower valve.

### Aftercare

Inta shower arms have a high quality finish and should be treated with care.

An occasional wipe with a mild washing-up liquid on a soft damp cloth followed by a thorough rinsing is all that is required.

**Do not use abrasive pads, bleach or solvents etc, as they will cause damage to the surfaces.**

### Shower Heads

The IN904CP shower arm can be used with the following shower heads;

- IN9000CP Intaccept overhead mini
- IN9100CP Intaccept overhead standard
- IN9200CP Intaccept overhead easy clean