


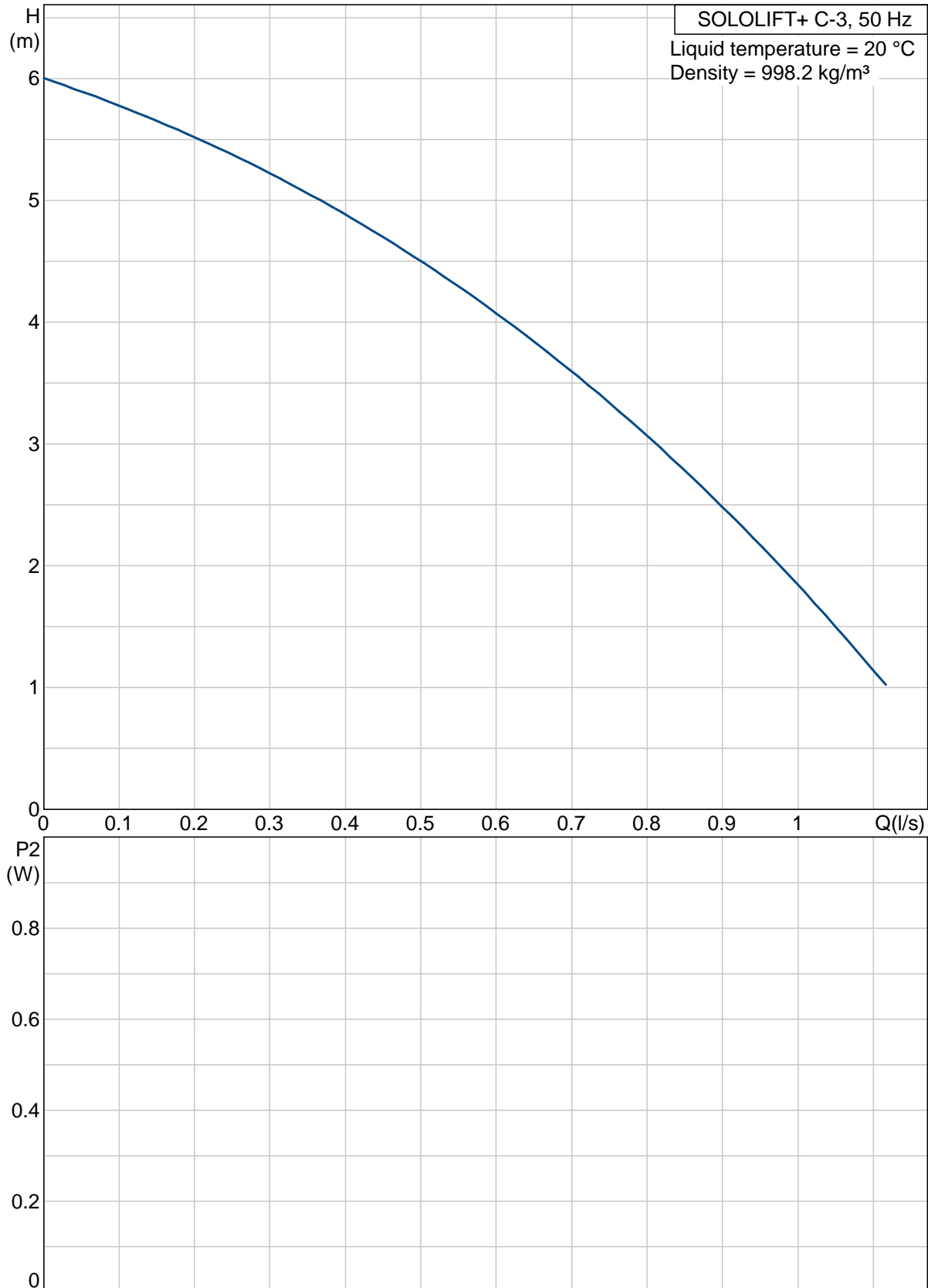
| Position | Qty. | Description | Single Price |
|----------|------|---|--------------|
| | 1 | <p>SOLOLIFT+ C-3</p>  <p>Note! Product picture may differ from actual product</p> <p>Product No.: 96176927</p> <p>Sololift+ C-3 is a small, compact automatic lifting station suitable for pumping of wastewater off places in private dwellings where wastewater cannot be led directly to the sewer by means of a natural downward slope.</p> <p>Sololift+ C-3 is typically used for:</p> <ul style="list-style-type: none"> • cabinet showers, washbasins, bath tubs, washing machines and dishwashers in basements below sewer level and • cabinet showers, washbasins, bath tubs, washing machines (max. 70°C for two minutes) and dishwashers installed in connection with the renovation or modernisation of existing buildings, where the location may be remote from the main soil pipe so that a natural slope cannot be established. <p>Sololift+ C-3 is suitable for installation under a washbasin or in a closet.</p> <p>Liquid:</p> <p>Maximum liquid temperature: 70 °C Liquid temp: 20 °C Density: 998.2 kg/m³</p> <p>Technical:</p> <p>Resulting head of the pump: 4.38 m</p> <p>Materials:</p> <p>Tank: ABS</p> <p>Installation:</p> <p>Pump inlet: 3 x DN 40 Pump outlet: DN 23/25/28/32</p> <p>Electrical data:</p> <p>Power input - P1: 0.3 kW Mains frequency: 50 Hz Rated voltage: 1 x 220-240 V Rated current: 1.5 A Cos phi - power factor: 0,8 Rated speed: 2850 rpm Enclosure class (IEC 34-5): 44 Insulation class (IEC 85): F Length of cable: 1.2 m Cable type: H05VV-F Type of cable plug: WITHOUT</p> | On request |



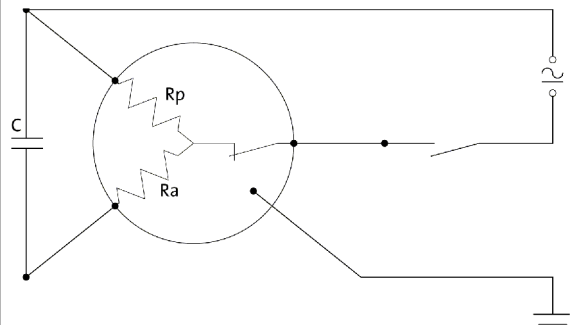
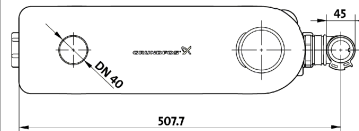
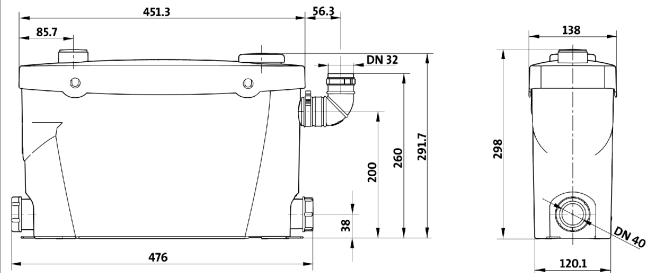
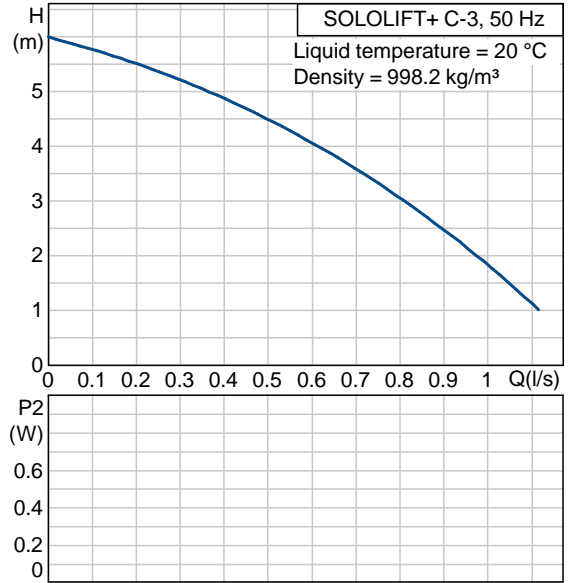
Company name: -
Created by: -
Phone: -
Fax: -
Date: -

| Position | Qty. | Description | Single Price |
|----------|------|-------------------------------|--------------|
| | | Others: Net weight: 5.6 kg | |

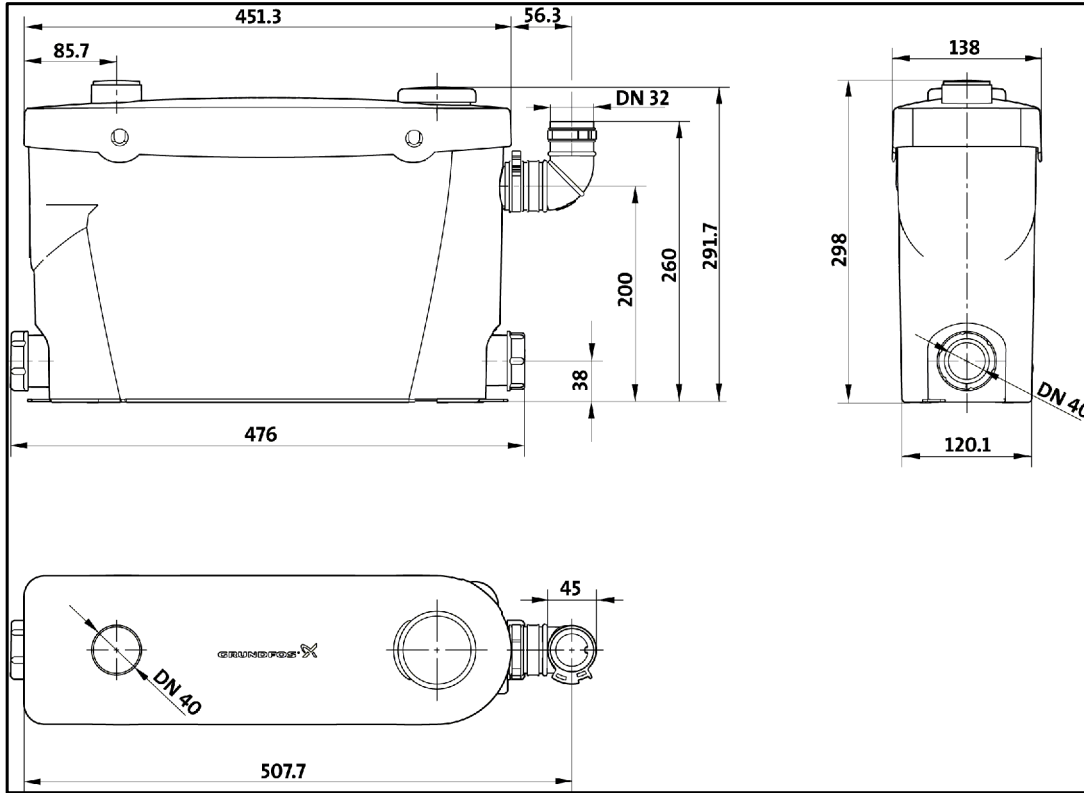
96176927 SOLOLIFT+ C-3 50 Hz



| Description | Value |
|-----------------------------|-------------------------|
| Product name: | SOLOLIFT+ C-3 |
| Product No: | 96176927 |
| EAN number: | 5700398696681 |
| Technical: | |
| Resulting head of the pump: | 4.38 m |
| Head max: | 4 m |
| Materials: | |
| Tank: | ABS |
| Installation: | |
| Pump inlet: | 3 x DN 40 |
| Pump outlet: | DN 23/25/28/32 |
| Liquid: | |
| Maximum liquid temperature: | 70 °C |
| Liquid temp: | 20 °C |
| Density: | 998.2 kg/m ³ |
| Electrical data: | |
| Power input - P1: | 0.3 kW |
| Mains frequency: | 50 Hz |
| Rated voltage: | 1 x 220-240 V |
| Rated current: | 1.5 A |
| Cos phi - power factor: | 0,8 |
| Rated speed: | 2850 rpm |
| Enclosure class (IEC 34-5): | 44 |
| Insulation class (IEC 85): | F |
| Thermal protec: | SB606 |
| Length of cable: | 1.2 m |
| Cable type: | H05VV-F |
| Type of cable plug: | WITHOUT |
| Cable: | Y |
| Cable size: | 3X1MM2 |
| Others: | |
| Net weight: | 5.6 kg |

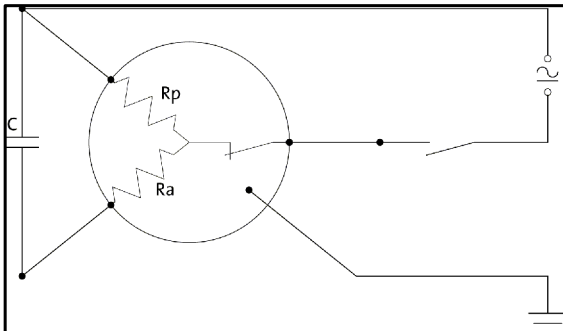


96176927 SOLOLIFT+ C-3 50 Hz



Note! All units are in [mm] unless others are stated.
 Disclaimer: This simplified dimensional drawing does not show all details.

96176927 SOLOLIFT+ C-3 50 Hz



Note! All units are in [mm] unless others are stated.