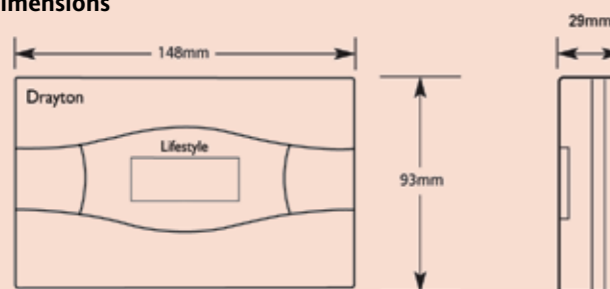


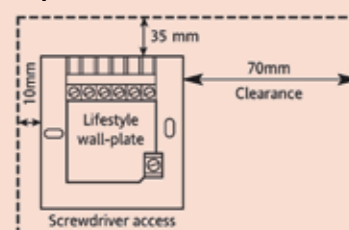
## Technical Data

Voltage	230V a.c. 50Hz
Output	Programmers: 230V 50Hz Timeswitches: According to supply to common terminal - voltage free contacts
Rating	2(1)A 230V a.c. each switch
Ambient temperature	Operating: 0°C to 50°C Storage: -20°C to 50°C
Battery Type	Lithium
Without mains power	Display: Blank Time and programme: Always preserved
Timing resolution	1 minute
Programming resolution	1 minute
Wiring	Designed for fixed wiring only, to comply with current IEE regulations
Maintenance	No user maintenance should be attempted
Relevant EC Directives	2006/95/EC Low Voltage Directive 2004/108/EC Electromagnetic Compatibility Directive
Applied Standards:	EN60730-1; EN60730-2-7

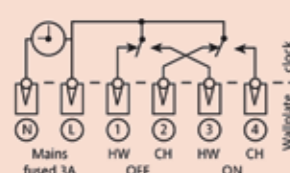
## Dimensions



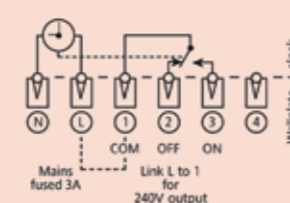
## Wall plate clearance



## Programmer internal wiring

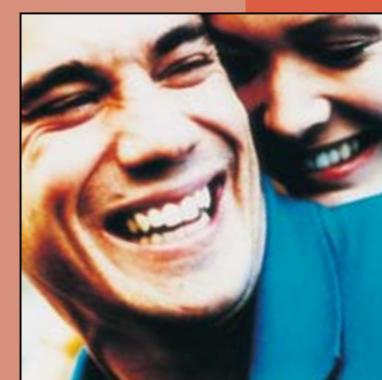


## Timeswitch internal wiring



## Drayton LPSi

The Control to help Landlords comply with R36, Gas Safety (Installation & Use) Regulations 1998



People



Products



Performance

Available from:

With all the features of Drayton's market leading LP time controls, the LPSi alerts householders when their boiler service is due. If the service is missed the LPSi reduces comfort levels until the boiler is serviced and the unit reset.

### Extra Features:

- Reduces comfort level
- Warning period 30 days before boiler service due
- Audible alarm if service missed
- Backlit display flashes to create visual alarm
- Automatic summer/winter time change

## Invensys Controls Europe

Customer Service Tel: 0845 130 5522  
Customer Service Fax: 0845 130 0622  
Technical Helpline Tel: 0845 130 7722  
Email: [customer.care@invensys.com](mailto:customer.care@invensys.com)  
Website: [www.draytoncontrols.co.uk](http://www.draytoncontrols.co.uk)

In accordance with our continuous improvement procedures, we reserve the right to change design features and specifications without prior notification. The Data contained in this document is for guidance only. Invensys Controls Europe accepts no liability for any consequential losses, injury or damage resulting from the use of this document or the information contained within



**invensys**  
Controls Europe



# The LPSi Range of programmers and timeswitches

The LP range of programmers and timeswitches has a well-established reputation for quality and reliability. Now extra features make this the ideal control to help landlords comply with Regulation 36 of the Gas Safety (Installation & Use) Regulations 1998.

Popular features such as the automatic summer/winter time adjustment, which makes the bi-annual summer/winter manual reset a thing of the past; and the memory saver ensuring the programme and clock never needs resetting, even in the event of a power cut, are joined by new features specially designed to assist landlords in complying with Regulation 36 and to ensure the safety of residents is not compromised due to irregular maintenance of the boiler.

The service period on the LPSi is selectable, allowing landlords to schedule servicing during the summer months if this is more convenient.

Thirty days before the boiler is due to be serviced the LPSi enters a warning period. During this time, the backlit display flashes providing a visual warning and the resident can read when the service is due on the display. All buttons/programming features are fully functional during this time.

If the boiler is not serviced despite the warnings, the LPSi will then reduce the comfort level in the property to a safe but uncomfortable level, encouraging the resident to call an engineer to check their heating system. The comfort level would be controlled by cycling the heating system on and off:

- The heating will function for the first fifteen (15) minutes of each hour during the programmed time;
- The hot water will function for the first thirteen (13) minutes of each hour during the programmed time

When the service is due, this reduced comfort mode is initiated. An audible alarm (selectable) will sound; this can be snoozed for a 24 hour period by pressing any key, but it will continue to sound until the boiler is serviced and the LPSi is reset using the special reset tool.

All buttons/programming features are disabled (except for the snooze feature) during this reduced comfort period. Once the boiler is serviced the infra red reset unit will be used by the heating engineer to reset the LPSi. The visual and audible warnings will now cease and the comfort level will return to normal.

The audible alarm and visual warnings makes the LPSi ideal for combination boilers. If the service is due in the summer months the reduced comfort mode will not be noticed because the heating will be switched off and the hot water is instantaneous.



## Features:

- Service period selectable
- Reduces comfort level
- Warning period
- Visual indication on LCD
- Audible alarm
- Backlit display flashes providing visual warning
- Separate reset unit
- Automatic summer/winter time change
- Memory saver - programme and clock never need resetting in the event of loss of power
- Easy to read, backlit screen
- New contemporary design
- Pre set clock
- 3 timing periods per day
- Programme advance buttons
- All programmers suitable for fully pumped or gravity heating systems
- Timeswitches are ideal for combination boilers and control of additional zones etc. (voltage free contacts)
- Universal backplate
- Part L Compliant (Part J in Scotland)
- Proven reliability

## Easy to Use



### LP111Si 24 hour timeswitch

Where simple time control is adequate, particularly for combi boilers, LP111Si is the ideal solution. With an improved display and four switching options it still remains a favourite with the elderly.



### LP711Si 7 day timeswitch

For enhanced levels of combi control, LP711Si gives the end user real flexibility with programming. With a standard weekday/weekend programme built in, setting of each days timings can be changed individually if required. Ideal where living patterns vary during the week.



### LPSi Reset unit

The easy to use re-set unit can be operated by simply pointing it at the programmer or timeswitch and pressing the button. The unit cannot be cloned and there is no need to remove the programmer or timeswitch from the wall before operation.



### LP241Si 24 hour programmer

If independent timing of each channel is required, linked to easy setting, LP241Si meets this criteria. For fully pumped systems heating and hot water can operate at different times giving greater scope for efficient use of energy.



### LP522Si 5 day/ 2 day programmer

Allowing different programmes for weekdays and weekends and independent timing of each channel. LP522Si provides the ability to control central heating even more efficiently. No longer do systems have to switch on as early weekends as they do on weekdays.



### LP722Si 7 day programmer

The top of the range LP722Si allows independent programming of each channel every day of the week. Where occupation varies, controlling the heating to suit can give considerable savings in energy costs. Holiday mode allows temporary shut down for chosen periods. 'Programme test' gives a systematic check on all settings.

