

1901

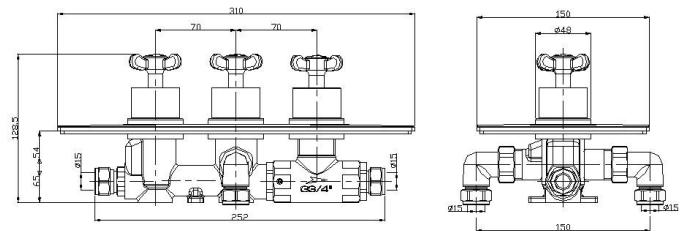
1901 THERMOSTATIC RECESSED THREE CONTROL SHOWER VALVE WITH TWO STOPCOCKS

Product Specification

Product Code:	N SHC3STPP C/G
Finishes:	Chrome (C), Gold (G)
Product Type:	Traditional
Construction:	Bodies are of all brass construction
Cartridge/Valve Type:	2 x ¼ turn ¾" ceramic disc on/off control with thermostatic temperature control
Supply:	Gravity (when pumped) and pressurised
Inlet Connections:	15mm compression, 150mm centres
Outlet Connection:	15mm compression
Water Pressure:	Min 1.0bar, Max. 8.0bar



Will suit minimum wall cavity depth: 55mm



Additional Information

- Three control – flow and temperature are controlled by separate handles, giving accurate control of both.
- Ceramic disc flow valve giving low maintenance and an easy ¼ turn on/off and flow control.
- Thermostatic cartridge maintains showering temperature to +/- 1 °C by compensating for changes in the incoming water temperature and pressure giving the stable outlet temperature. Designed to meet requirements of BS EN 1287:1999 and BS EN 1111:1999.
- Automatic shut off in the event of hot or cold water supply failure, thus reducing the risk of scalding.
- Factory set to a maximum of 42 °C to eliminate the ability to select an unsafe temperature, this can be adjusted to suit user preference.
- Swivel inlet elbows with 150mm centres, valve can be fed from top, bottom or rear
- Shower supplied as 'valve only' and thus can be customised by choosing accessories from our Pick 'N' Mix showering options. Please see our Product and Price Guide for details
- Hose outlet included
- Extension kit available to cater for thicker wall thicknesses. Order separately – SHC STP EXT02 C, SHC EXT01 C
- Chrome plated to BS EN 248.

Technical Advice: For further information please call 0844 7016273 or email customercare@bristan.com.
Guarantee: 5 years covering manufacturing faults.

Compliance/Approvals

WRAS: Pending

Flow Rates (litres per minute, open outlet)

System Pressure	0.2bar	0.5bar	1bar	2bar	3bar	5bar
Outlet 1	8.7	13.1	19.0	27.5	33.6	43.4
Outlet 2	8.7	13.1	19.0	27.5	33.6	43.4