

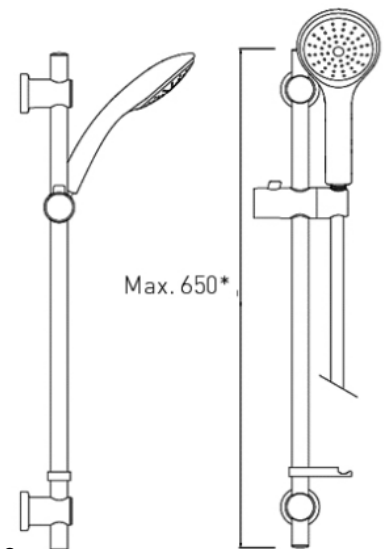
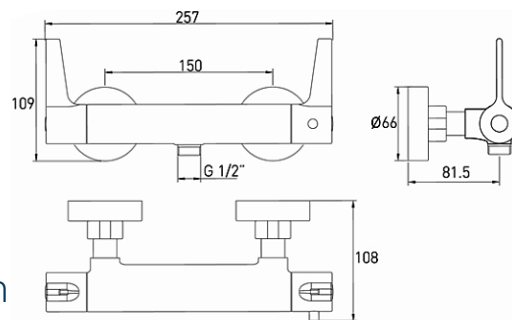
TECHNICAL DATASHEET

DESIGN UTILITY LEVER CHROME

DESIGN UTILITY LEVER BAR MIXER WITH ADJUSTABLE RISER KIT AND FAST FIT WALL FIXINGS

Product Specification

Product Code:	DUL2 SHXARFF C
Finish:	Chrome
Product Type:	Contemporary
Construction:	Body is of brass construction
Cartridge Type:	Thermostatic Cartridge
Supply:	Nominally equal (balanced) inlet supply pressures are required for optimum performance. If pressures are unequal, then a pressure reducing valve should be used)
Inlet Connections:	15mm compression
Working Pressures:	Min 0.2bar, Max 5.0bar Maximum Static Pressure 10.0bar
Dimensions for Fitting:	150mm inlet centres



Additional Information

- Dual control – Flow and temperature are controlled separately, giving accurate control of both
- Factory set to a maximum of 38°C to eliminate the ability to select an unsafe temperature – this is adjustable to suit user preference and up to a maximum of 46°C.
- Supplied with WMNT10 C fast fit connections.
- Chrome plated to BS EN 248
- Supplied with 1.5m hose, riser rail, hose retainer and single function handset.

Technical Advice: For further information please call 0844 7016273 or email customer@bristan.com

Guarantee: 5 years covering manufacturing faults.

Compliance/Approvals

WRAS: Certificate No: 1409056

FlowRates (litres per minute)

System Pressure (bar)	0.2	0.5	1.0	2.0	3.0	4.0
Open Outlet	5.7	10.1	14.6	20.6	25.3	29.8

Bristan, Birch Coppice Business Park, Dordon, Tamworth, B78 1SG
Telephone: 0844 701 6274 Facsimile: 0844 701 6275
Web Site: www.bristan.com Email: enquire@bristan.com



The information contained on this page was correct at date of issue. Fitting dimensions are provided as a guide only. Some variation may occur due to manufacturing tolerances. Bristan pursues a policy of continuing improvement in design and performance of its products and so reserves the right to change specifications without prior notice.