

TECHNICAL DATASHEET

ZING COOL CHROME

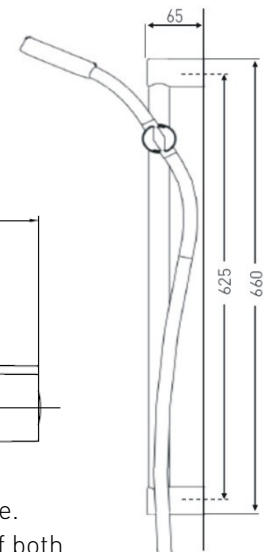
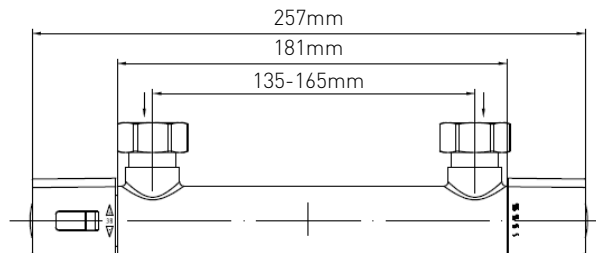
ZING THERMOSTATIC COOL CHROME SURFACE MOUNTED BAR SHOWER VALVE WITH ADJUSTABLE RISER KIT

Product Specification

Product Code:	ZI SHXSMCT C, ZI SHXSMCTFF C
Finish:	Chrome
Product Type:	Contemporary
Construction:	Body is of brass construction
Valve Type:	¼ Turn ½" ceramic disc valve
Cartridge Type:	Thermostatic Cartridge
Supply:	Suitable for all plumbing systems (Preferably balanced)
Inlet Connections:	G ½"
Outlet Connection:	G ½"
Working Pressures:	Min 0.2bar, Max 5.0bar Maximum Static Pressure 10.0bar
Dimensions for Fitting:	ZI SHXSMCT C - 135-165mm adjustable inlet centres ZI SHXSMCTFF C - 150 mm inlet centres



ZI SHXSMCT C shown above



Additional Information

- Unique Cool Chrome technology ensures the bar valve stays cool to the touch while in use.
- Dual control – Flow and temperature are controlled separately, giving accurate control of both.
- Thermostatic cartridge maintains showering temperature to +/- 1°C by compensating for changes in the incoming water temperature and pressure giving the stable outlet temperature.
- Factory set to a maximum of 38°C to eliminate the ability to select an unsafe temperature – this is adjustable to suit user preference and up to a maximum of 46°C.
- ZI SHXSMCT C supplied with cranked union connections for variable inlets between 135-165mm.
- ZI SHXSMCTFF C supplied with WMNT10 C fast fit connections.
- Supplied with 1.5m hose, riser rail, hose retainer and single function handset with rub clean nozzles.
- Chrome plated to BS EN 248

Technical Advice: For further information please call 0844 7016273 or email customer@bristan.com

Guarantee: 5 years covering manufacturing faults.

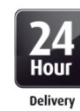
Compliance/Approvals

Manufactured to comply with WRAS

Flow Rates (litres per minute)

System Pressure (bar)	0.2	0.5	1.0	1.5	2.0	3.0	4.0	5.0
Open Outlet	4.0	7.0	10.2	12.5	14.4	17.7	20.4	22.8

Bristan, Birch Coppice Business Park, Dordon, Tamworth, B78 1SG
Telephone: 0844 701 6274 Facsimile: 0844 701 6275
Web Site: www.bristan.com Email: enquire@bristan.com



The information contained on this page was correct at date of issue. Fitting dimensions are provided as a guide only. Some variation may occur due to manufacturing tolerances. Bristan pursues a policy of continuing improvement in design and performance of its products and so reserves the right to change specifications without prior notice.

D4