

## AFTERCARE INSTRUCTIONS

Your fitting has a high quality finish and should be treated with care to preserve the visible surfaces.

All surface finishes will wear if not cleaned correctly, the only safe way to clean your mixer is to wipe with a soft damp cloth. Stains can be removed using washing up liquid. All bath cleaning powders and liquids will damage the surface of your fitting, even the non-scratch cleaners. **NOTE: Never use abrasive detergents or disinfectants or those containing alcohol, hydrochloric acid or phosphoric acid.**

Bristan recommend E-Cloth for cleaning all of our bathroom & kitchen products. Using just water, E-cloth gives a smear free, deep clean by breaking up and holding dirt, which normal cloths leave behind. Order through your Bristan stockist. (ORDER CODE: ECLOTH)



## GUARANTEE

All products are manufactured to the highest standards and a 5 year guarantee covers any defect in manufacture.

**NOTE: The 5-year guarantee on the cartridge is invalidated if damaged by any waterborne debris.**

**NOTE: All products must have access for servicing or replacement during the life of the product.**

In the interests of continuous product development we reserve the right to alter specification as necessary

**PRODUCT CODE: VA BARSHXSM C**

**TELEPHONE HELPLINE: 0844 701 6273**

Bristan Group Limited  
Birch Coppice Business Park  
Dordon  
Tamworth  
Staffordshire  
B78 1SG  
UK  
A Masco Company  
Website: [www.bristan.com](http://www.bristan.com)  
Telephone: 0844 701 6274  
Facsimile: 0844 701 6275  
Email: [enquire@bristan.com](mailto:enquire@bristan.com)

# BRISTAN

## Value Thermostatic Surface Mounted Bar Shower Valve with Adjustable Riser

## Fitting Instructions & Contents List

Before starting any installation project please consider:

Prior to drilling into walls, check there are no hidden electrical wires, cables or water supply pipes with the aid of an electronic detector. If you use power tools do not forget:



- Wear eye protection
- Unplug equipment after use

**Please keep these instructions for future reference and request of replacement part**

# Contents

Section	Description	Page No:
1.	Introduction	1
2.	Specification	1
3.	Pack Contents Checklist	2
4.	Installation	2
5.	Operation	4
6.	Setting	4
7.	General Fault Diagnosis	4
8.	Cleaning & Maintenance	5
9.	Pack Contents Checklist (Flexible Kit) with Installation	6

## 1. Introduction

Your Bristan thermostatic shower fitting is a dual control mixing valve incorporating a wax capsule thermostat to ensure constant showering temperatures.

This valve has been designed to comply with BS EN1111:1999. Manufactured to the highest quality standards.

These instructions are for your guidance to a safe and successful installation and should be left with the user.

All products manufactured and supplied by Bristan are safe provided they are installed, used correctly and receive regular maintenance in accordance with these instructions.

## 2. Specification

**Inlet Connections:** 1/2" BSP Z connectors with 135mm - 165mm between centres

**Water Pressures:** Min 0.5 bar (5 metres from the base of the cold water tank to the shower head) Max. 5 bar.

Maximum recommended imbalance between hot and cold supply should not exceed a ratio of 5:1.

**Maximum Outlet**

**Temperature:** Factory set to 38°C to the temperature stop (can be re-set to suit site conditions).

### Hot and Cold Supply Temperature

Maximum Cold Supply: 25°C

Minimum recommended hot supply: 60°C

Maximum Hot Supply: 80°C

**Note: The inlet hot water temperature must be at least 10°C above the required blend temperature.**

## 9. Adjustable Riser Contents Check List

1. Wall Plugs	(x2)	7. Rail End Caps	(x2)
2. Wall Brackets	(x2)	8. 20mm $\varnothing$ Handset Holder	(x1)
3. Screws	(x2)	9. Shower Hose	(x1)
4. 20mm $\varnothing$ Riser Rail	(x1)	10. Hose Washer	(x2)
5. Grub Screws	(x2)	11. Handset	(x1)
6. Bracket Caps	(x2)		

## Installation

Measure the centres of the wall brackets (1) when assembled with the riser rail (2). Mark out the position of the required mounting holes. Before drilling ensure that the handset will reach the slider when it is in the extreme position. Drill holes to suit wall plugs (if required) and secure the wall brackets (1) to the wall.

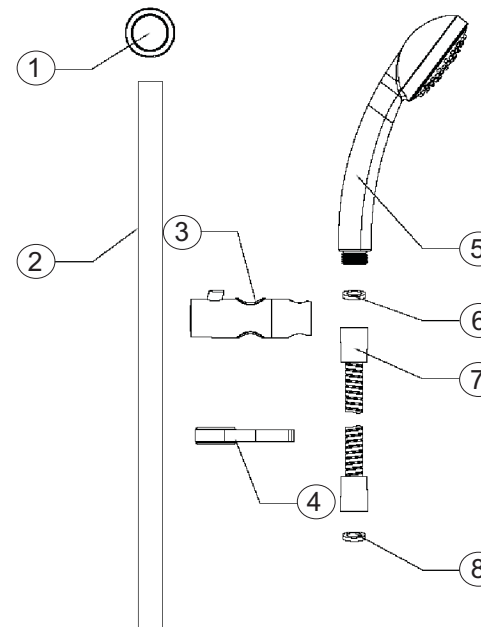
Before starting any installation project please consider:



Prior to drilling into walls, check there are no hidden electrical wires, cables or water supply pipes with the aid of an electronic detector. If you use power tools do not forget:

- Wear eye protection
- Unplug equipment after use

Slide on the hose retaining ring (4) and handset holder (3) onto the riser rail. Secure the rail onto wall brackets. Fit the bracket caps, if not already fitted. Connect the hose (7) to the handset (5), using the hose washers (6). Connect the hose to the shower valve outlet using the second hose washer (8).



6

## 8. Cleaning & Maintenance

### 8.1 Cleaning

Your fitting has a high quality finish and should be treated with care to preserve the visible surfaces.

All surface finishes will wear if not cleaned correctly, the only safe way to clean your mixer is to wipe it with a soft damp cloth. Stains can be removed using washing up liquid. All bath cleaning powders and liquids will damage the surface of your fitting, even the non-scratch cleaners.

### 8.2 Regular Maintenance

**We advise that the valve is regularly serviced, particularly in hard water areas. It is also important to clean the handset regularly in hard water areas to maintain an even spray/flow of water.**

**NOTE: ISOLATE THE WATER SUPPLY TO THE SHOWER VALVE.**

### 8.3 Cartridge Removal (See Fig.1)

**8.3.1** Remove the temperature control handle (3), by removing the head cap (1) and unscrew the head screw (2).

**8.3.2** Unscrew the cartridge (5) anti-clockwise out of the body.

### 8.4 Cartridge Maintenance

**8.4.1** Place the cartridge in a bowl and carefully add some hot water (just off the boil) and vinegar to de-scale the cartridge. Leave until the water had cooled.

**8.4.2** Then remove the cartridge and rinse with clean water.

### 8.5 Refitting the cartridge

**8.5.1** Grease the seals with suitable silicon grease and carefully refit the cartridge into the body.

**8.5.2** Re-set the maximum temperature and refit temperature handle.

## 3. Pack Contents Checklist

- 1 x Shower Valve
- 2 x Z Connectors
- 2 x Shrouds
- 2 x Rubber Washer
- 1 x Adjustable Riser Kit

## 4. Installation

**4.1** Identify all components and check for completeness, particularly before commencing installation.

**4.2** This mixer should be installed in compliance with the Water Regulations. For Further details contact your Local Water Authority.

**4.3** This mixing valve is suitable for use with the following systems:

- \* Gravity Fed Hot & Cold (Equal Pressure)
- \* Gravity Fed Hot & Mains Cold (Differential Pressure).
- \* Unvented Systems
- \* Thermal Store Systems
- \* Gas Combination Boiler
- \* Pumped System

### PLEASE NOTE:

**On gravity systems the minimum distance from the underside of the cold water storage tank to the shower head must be 5 metres.**

**4.4** Connect the Z connectors (10) to suitable ½” BSP female connectors (not supplied) leaving enough thread protruding from the wall for the shroud and valve to fit to. Once fitted water should be flushed through the system to Remove all debris from the pipework.

\* **Other wall mount fixing are available within the Bristan Product and Price guide.**

\* **NOTE: - The fixing centres are a NOMINAL DISTANCE of 150mm. The inlets centres can be adjusted to the Z connectors between 135mm - 165mm.**

\* **Important: - Water supplies to the mixer must be with the Hot on the left, and Cold on the right when viewed from the front.**

**4.5** Screw the shrouds (12) onto the Z connectors (10).

**4.6** To fit the mixer body to the wall. Place the rubber washers (11) into the connecting nuts (17) and tighten onto the Z connectors (10).

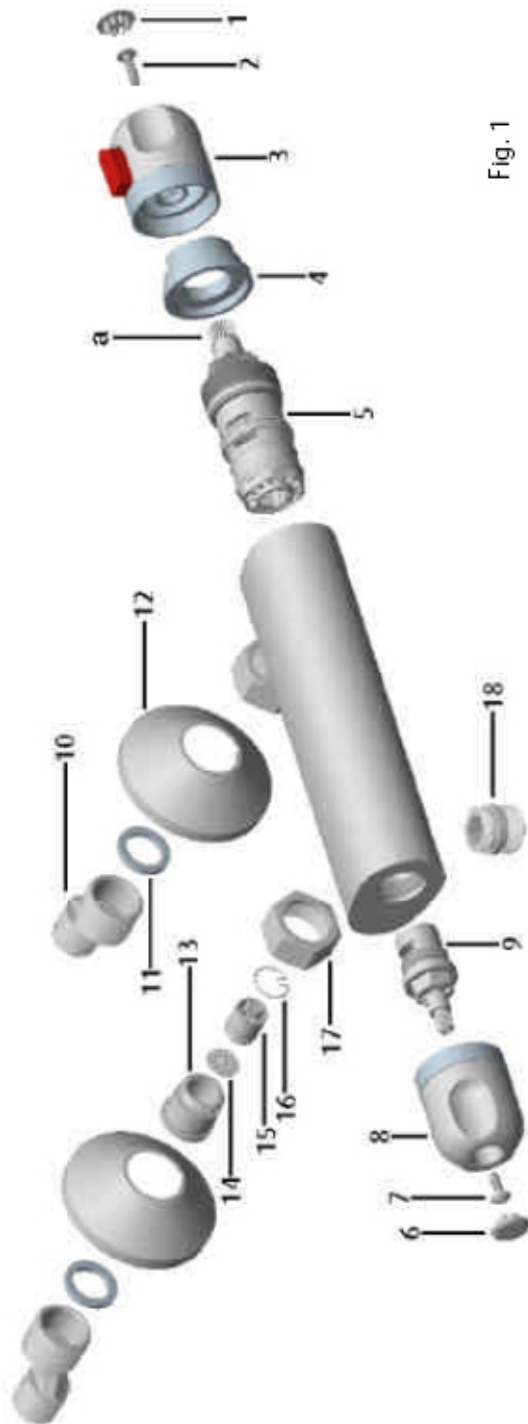


Fig. 1

## 5. Operating

### 5.1 On/Off Flow Control

There are 2 control handles on the shower. Turn the flow control handle (left) anti-clockwise to turn on and increase the flow, and clockwise to decrease and turn off. The temperature control handle (right) is turned anti-clockwise for hot, clockwise for cold. **Warning! The maximum temperature past the 38°C stop will be about the same temperature as the incoming hot water.**

## 6. Setting

- 6.1 The maximum temperature can be adjusted to suit site conditions or user preference. To adjust this, follow this procedure:
- 6.2 Position the temperature control handle to the maximum temperature point and turn on the flow control handle letting the water run long enough to ensure that the hot water supply is at its maximum temperature.
- 6.3 The shower has been factory set to 38°C at the first stop position with balanced supply pressures of 0.5 bar.
- 6.4 **While the water is flowing** remove the temperature control handle (3), by Removing the head cap (1) and unscrew the head screw (2).
- 6.5 Turn the cartridge spindle (a) until the required maximum temperature is achieved (the spindle may need to be repositioned to allow the head to line up with the stop ring (4) on the shower), anti-clockwise to increase the temperature and clockwise to reduce it.
- 6.6 **Important:** Refit the handle so that the stop pin in the handle (3) fits inside The rim of the stop ring (4).
- 6.7 Push the handle back on and turn clockwise.
- 6.8 Turn off the flow at the flow control handle.

## 7. General Fault Diagnosis

- 7.1 If your valve fails to function correctly, the following should be checked:
  - 7.1.1 Check that the hot and cold connections are the correct way around. Hot on the left, cold on the right when viewed from the front.
  - 7.1.2 Ensure that the hot water temperature is adequate. The recommended minimum temperature is 60°C.
- 7.2 If your shower will not turn off:
  - 7.2.1 Check the ceramic disc valve (9) is free of debris.
- 7.3 If your shower has a low flow rate.
  - 7.3.1 Check that the filters (14) are not blocked (If needed to be removed the for cleaning the inlet retainer (13) has a left hand thread, to unscrew turn Clockwise).