

ed, Corrosion Master has been proving itself to be the first choice for non-chemical protection of heating circuits. With its considerable advantages over support from local authority specifiers who have recognised the cost-effective benefits gained from the maintenance free aspect of the device.

### Independent Testing

During the year 2000 Scalemaster submitted Corrosion Master to Advantica\* for independent testing at its Gas Research & Technology Centre in Loughborough, UK.

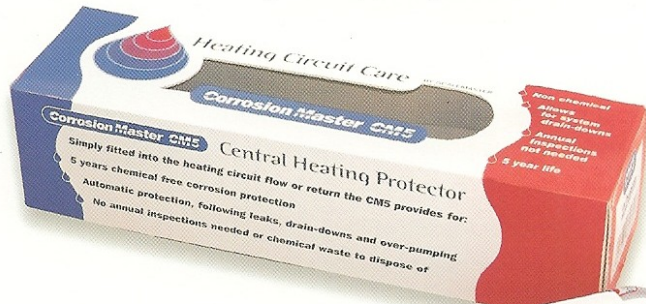


This world-renowned research establishment originally part of British Gas has considerable expertise in the field of corrosion and regularly tests heating system inhibitors that are on sale in the UK.

Test data is available on request or at [www.scalemaster.co.uk](http://www.scalemaster.co.uk)

### CM5

- 5 year maintenance free corrosion protection
- Copper body / Chrome plate finish
- Installation date label included
- 22mm only
- 2 year no quibble guarantee



**5 year life**

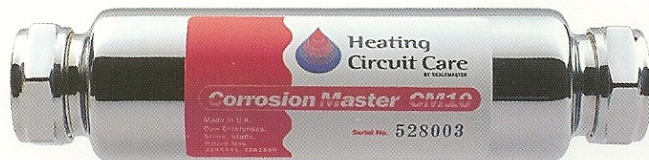
### What are the benefits over chemical treatment?

	Physical	Chemical
Cheapest to fit		✓
Automatic protection against leaks and pump over	✓	
Visible protection – no overdose or underdose worries	✓	
Annual inspections not needed	✓	
No need to redose following drain downs	✓	
No chemical waste	✓	
Choice of 10 or 5 year product life	✓	

**automatic protection - following drain-downs...**

**...leaks and pumping over**

# CM10



## Is Corrosion Master new?

No, over the last 8 years since it was first patented in 1998, the product has found considerable success in the world of heating chemicals.

### The Physical Approach.

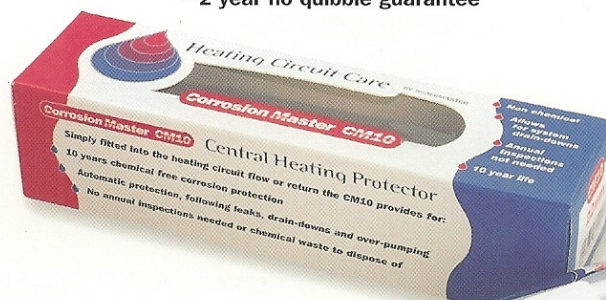
#### How do Corrosion Master CM10 and CM5 models work?

Corrosion Master acts as a galvanic cell and works in 3 different ways:

1. Dissolved oxygen (D.O.) present in a system is converted into a harmless hydroxide species, which does not support the corrosion process. Depriving the corrosion process of its vital oxygen source is seen as a key issue in terms of prevention.
2. Zinc species from the anode are released into the heating circuit water, providing cathodic protection throughout the system.
3. Once fitted, Corrosion Master is automatically activated by the presence of dissolved oxygen that entered via the tap water used for filling. It will then continue to work until all D.O. has been eliminated, switching off only to be reactivated by the introduction of fresh water. In this sense Corrosion Master is permanent and automatic.

## CM10

- 10 year maintenance free corrosion protection
- Copper body / Chrome plate finish
- Installation date label included
- 22 & 28mm sizes available
- 2 year no quibble guarantee



## 10 year life



### Where do you fit CM10 & CM5 and what preparation is required?

As with a chemical inhibitor the heating circuit should be flushed out thoroughly with either a cleaner or sludge remover such as SM3 and SM4 in line with BS 7593. Once completed CM5 or CM10 should be fitted to the flow or return of the heating circuit of the boiler using the compression fittings provided.

**chemical free  
corrosion protection**

**no annual  
inspections**