



Concept Freedom Ensuite Bathroom Pack with 40cm Basin & Extended Wall Hung WC

Illustrated

S6404 Concept Freedom ensuite bathroom pack with 40cm basin & extended wall hung WC

Configuration options

Material

Chrome Plated Metal & Vitreous China

Designer

Robin Levien, RDI

Weights

Colours

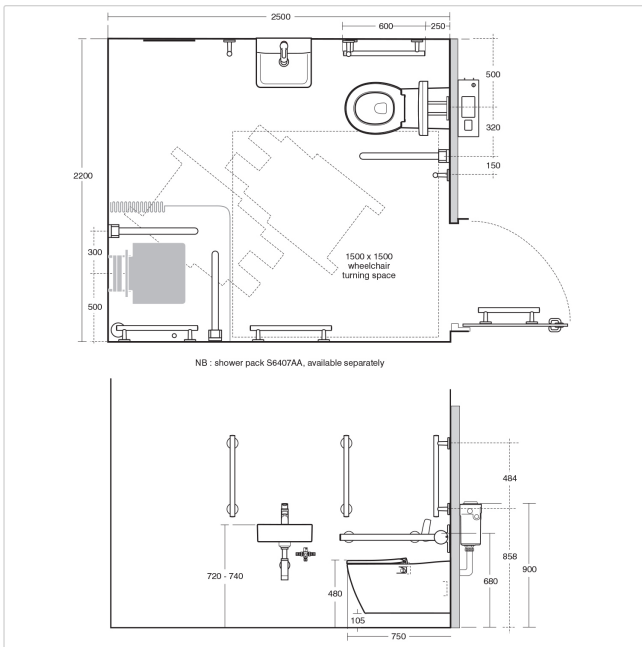
Chromium plated (AA)

Frequently used applications

General Healthcare

Hotels

Residential



NB : shower pack S6407AA, available separately



Tel: 0870 122 8822
Fax: 0870 122 8282
Email: info@idealspec.co.uk
Web: www.idealspec.co.uk

Ideal Standard (UK) Ltd. makes every effort to ensure that the information provided on its website is accurate. However, we cannot guarantee this, and accept no liability for any information or advice given via its website.



Date created: 27/02/2015