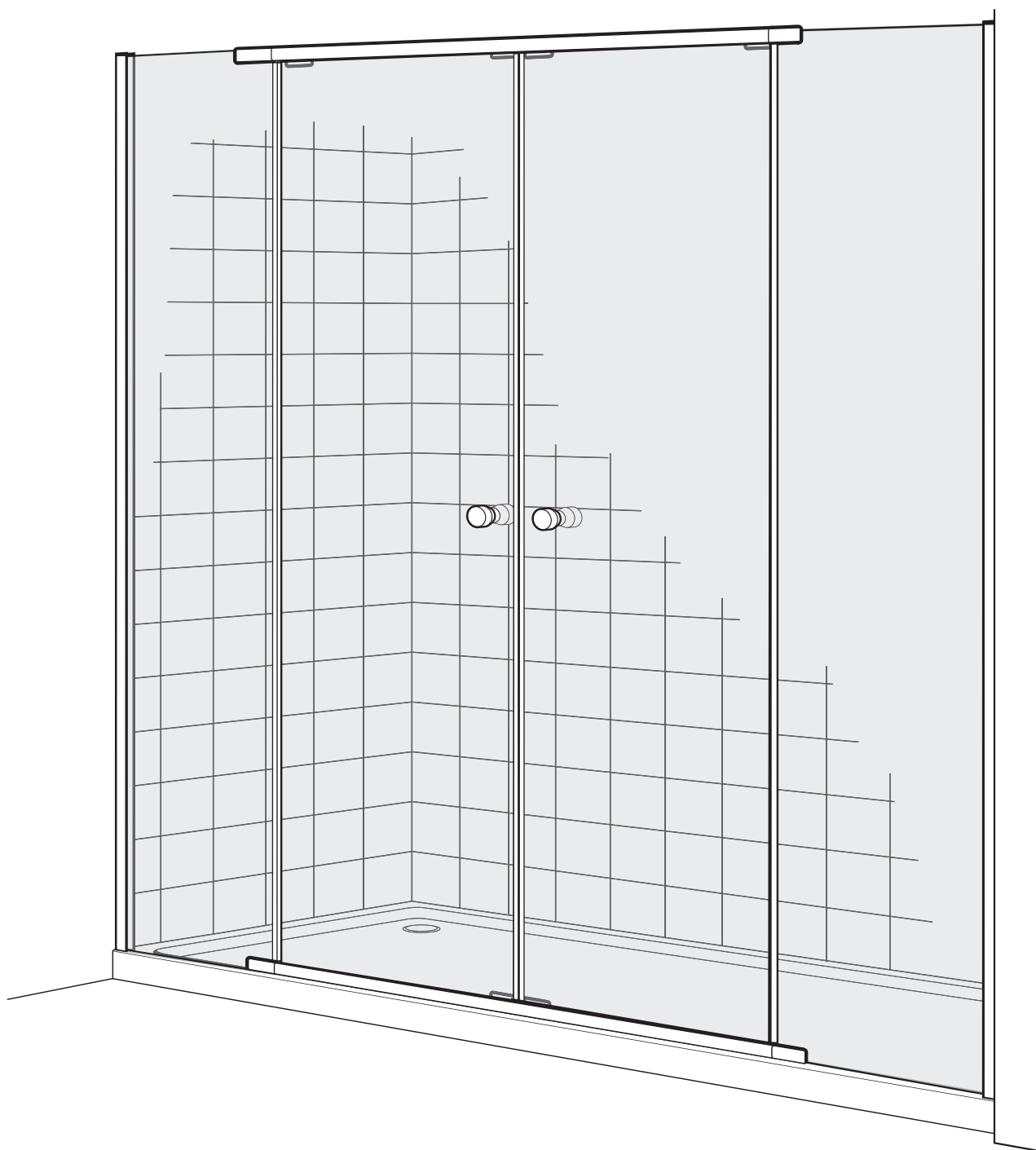




Double Sliding Door (81 & 82)



Fitting Instructions

Introduction

The following pages aim to provide comprehensive installation instructions, plus advice on how to care and maintain your product.

We recommend that the unit is installed by a qualified Plumber or Engineer.

Please retain these instructions for future reference.



Safety Precautions

Caution: Care should be taken when drilling into walls and floors to avoid any hidden pipes or wires.

We strongly recommend that all glass panels are moved by a minimum of two people and that any protective packaging along the glass edges is kept in place for as long as possible to prevent damage before installation.



Wear protective footwear when lifting panels



Wear safety glasses when drilling

People not familiar with the fitting of Mira products may require the assistance from another person at certain stages of the procedure. We have indicated these points in the process with the Caution Symbol.



Caution

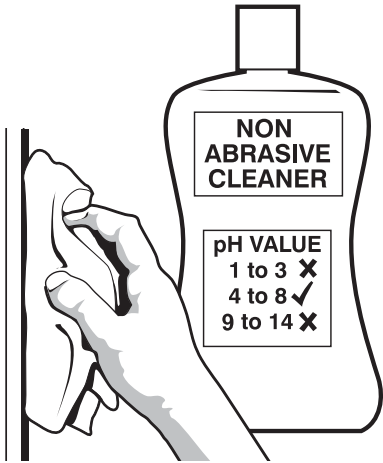
Care & Maintenance

The unit should be wiped down immediately after each use.

Use a non abrasive cleaner with a pH value between 4 & 8, applied with a soft cloth. A 50:50 solution of vinegar & water can be used on lime scale deposits, rinsing off thoroughly after use. Do not use alkalis such as caustic soda.

Under no circumstances should scourers or powerful detergents be used as these can damage the metallic surface of the frame and the surface of the tray or bath.

If fitted correctly the unit should not require any maintenance other than cleaning. If problems do occur contact the Mira Enclosures Technical Helpline Tel: 0844 571 5000



Guarantee

For domestic installations, Mira Showers guarantee this shower enclosure against any defect in materials or workmanship for a period of ten years from the date of purchase.

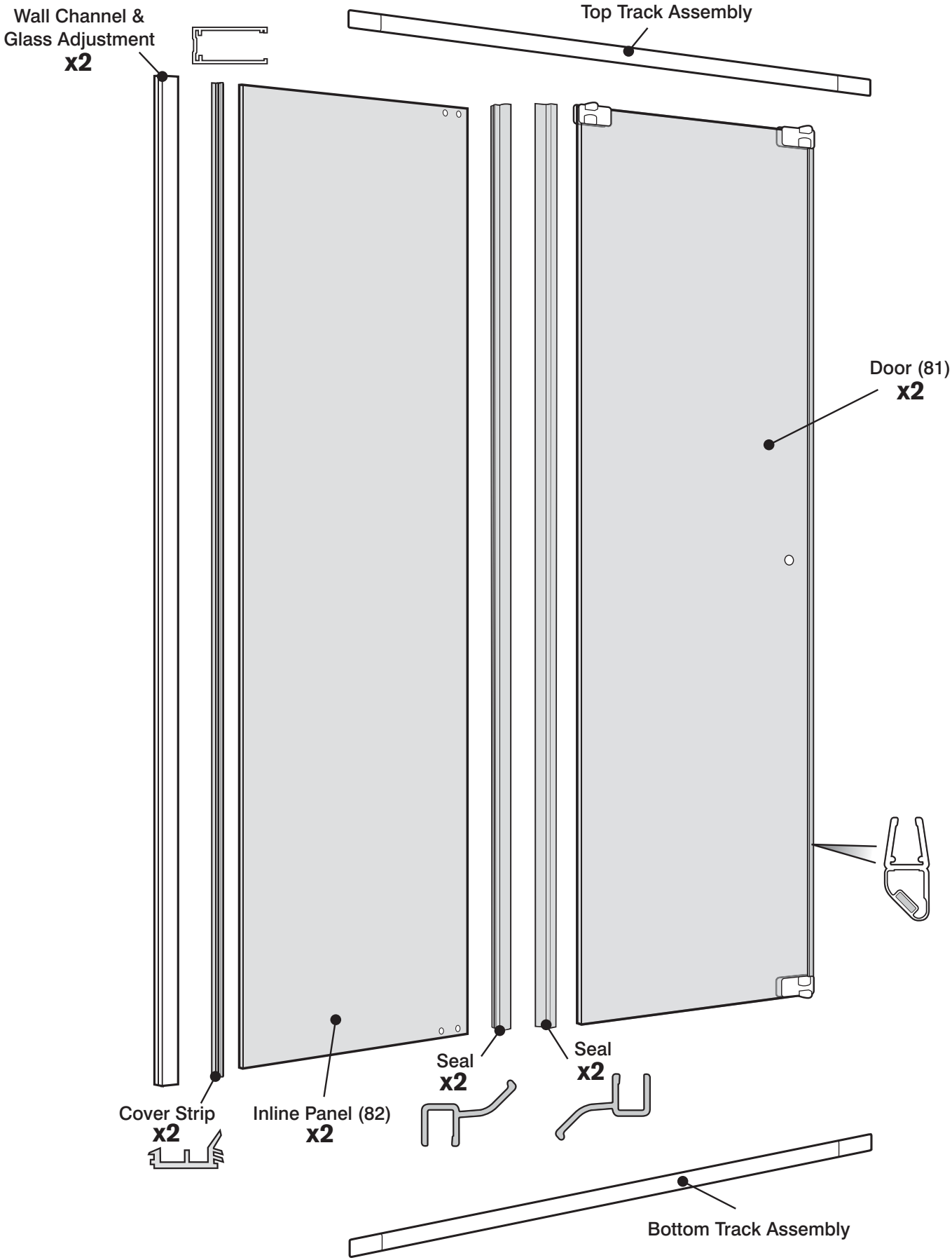
For non-domestic installations, Mira Showers guarantee this shower enclosure against any defect in materials or workmanship for a period of one year from the date of purchase.

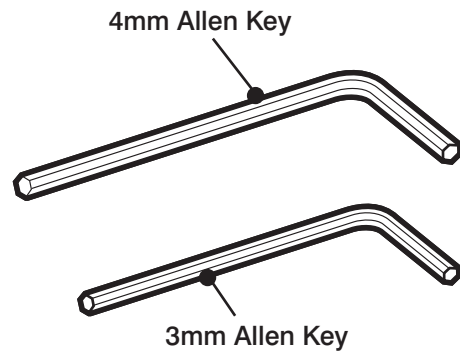
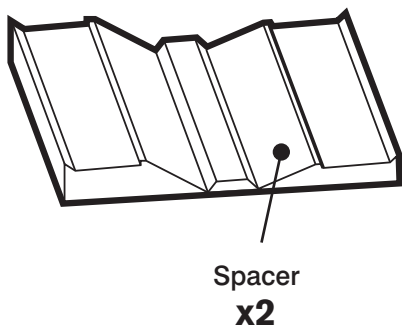
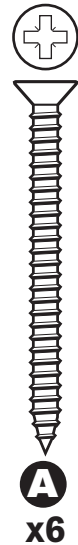
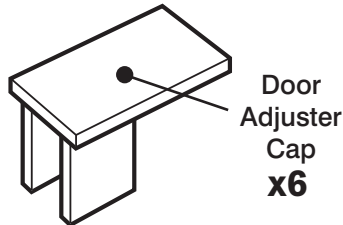
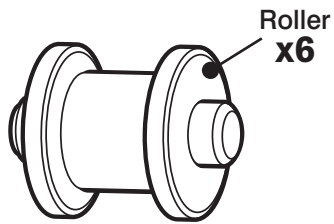
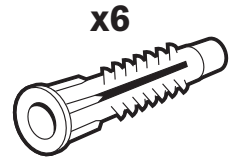
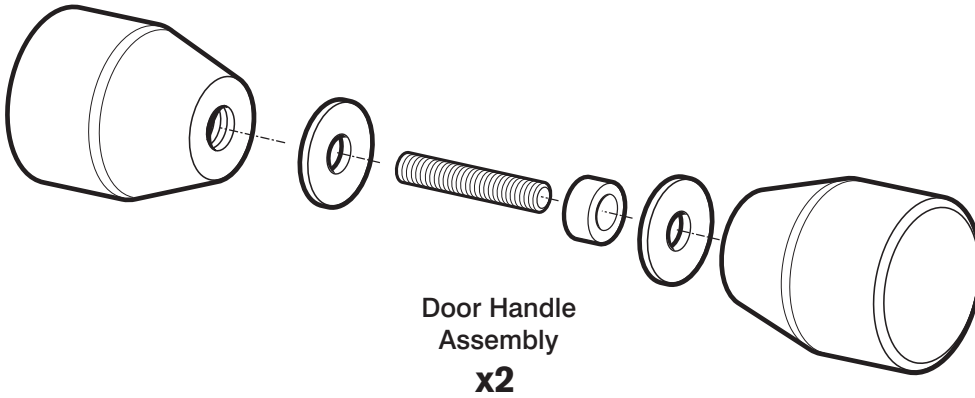
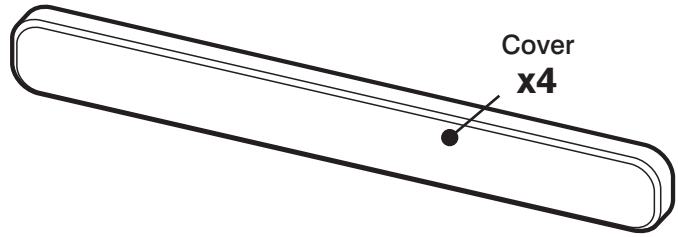
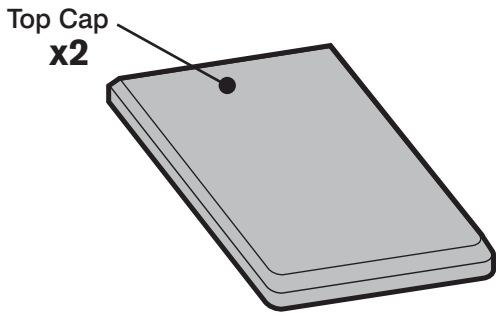
For Terms and Conditions refer to the page opposite.

Recommended Usage	Domestic ✓
	Light Commercial ✓
	Heavy Commercial ×
	Healthcare ×

Components

Before installation check that all components are correctly supplied.
If any parts are missing please ring the helpline. Tel: 0844 571 5000





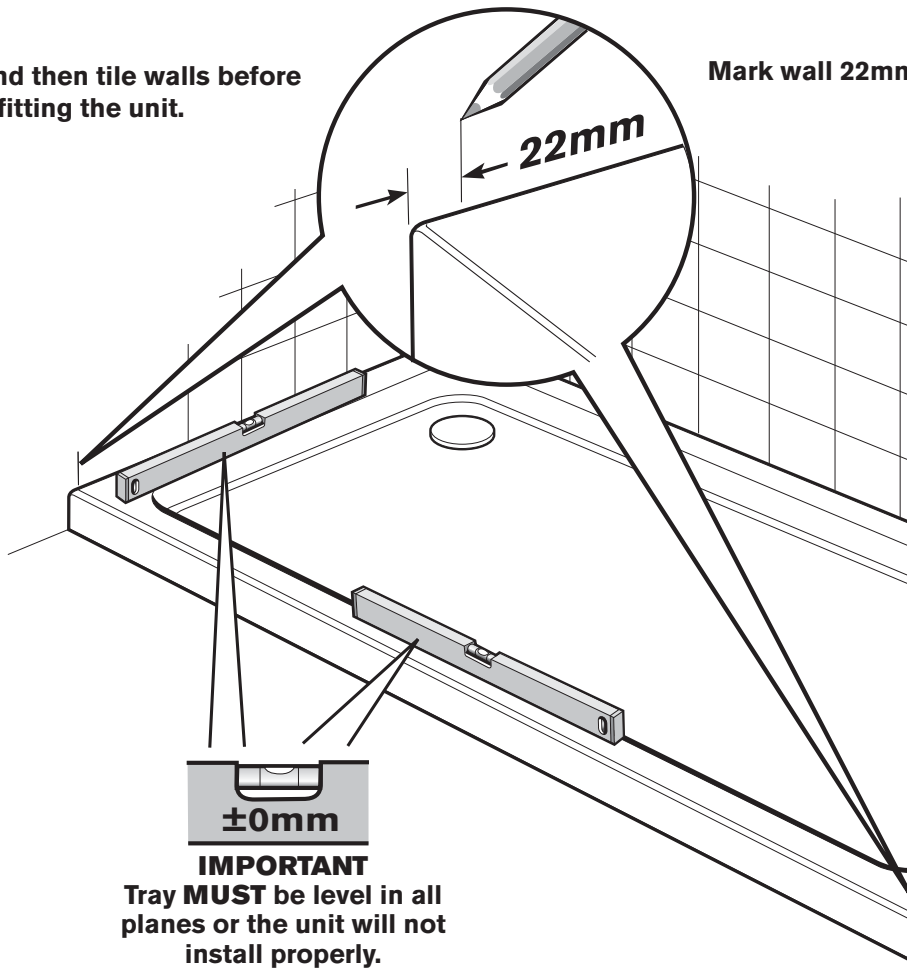
Adjustment Range	
1500 unit	1451 to 1509mm
1600 unit	1551 to 1609mm
1700 unit	1651 to 1709mm



0844 571 5000

Fit tray and then tile walls before fitting the unit.

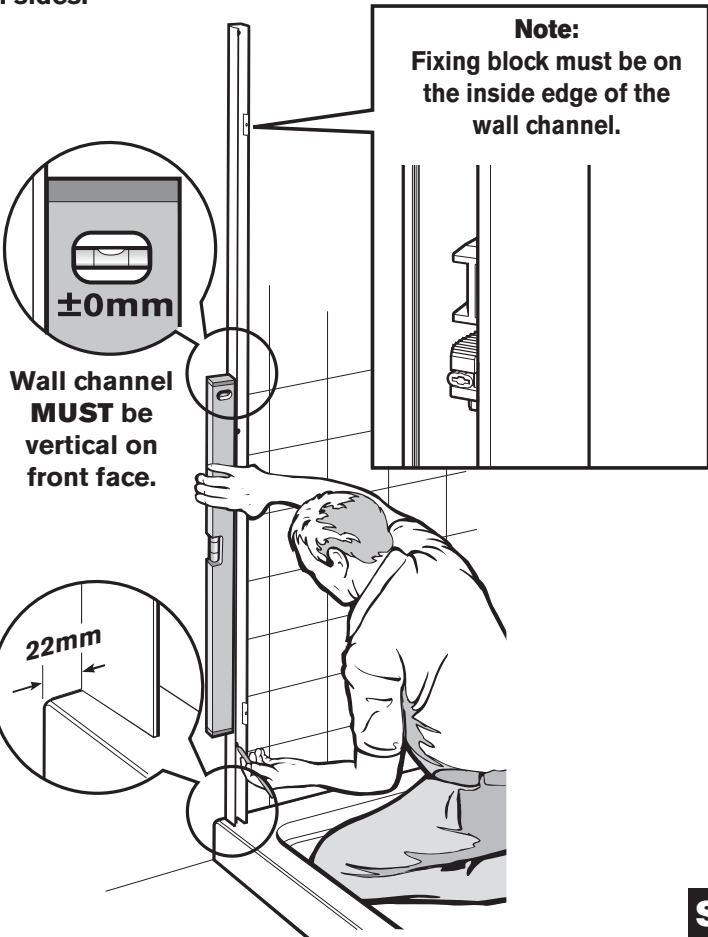
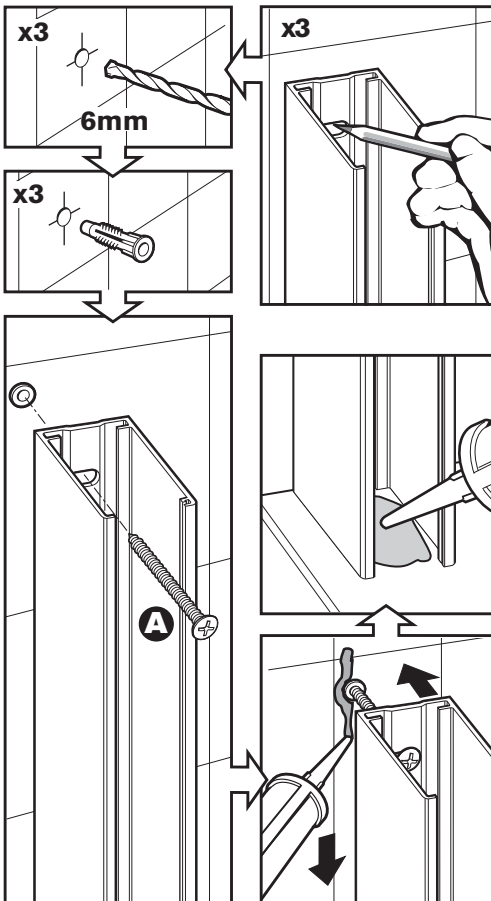
Mark wall 22mm in from edge of tray.



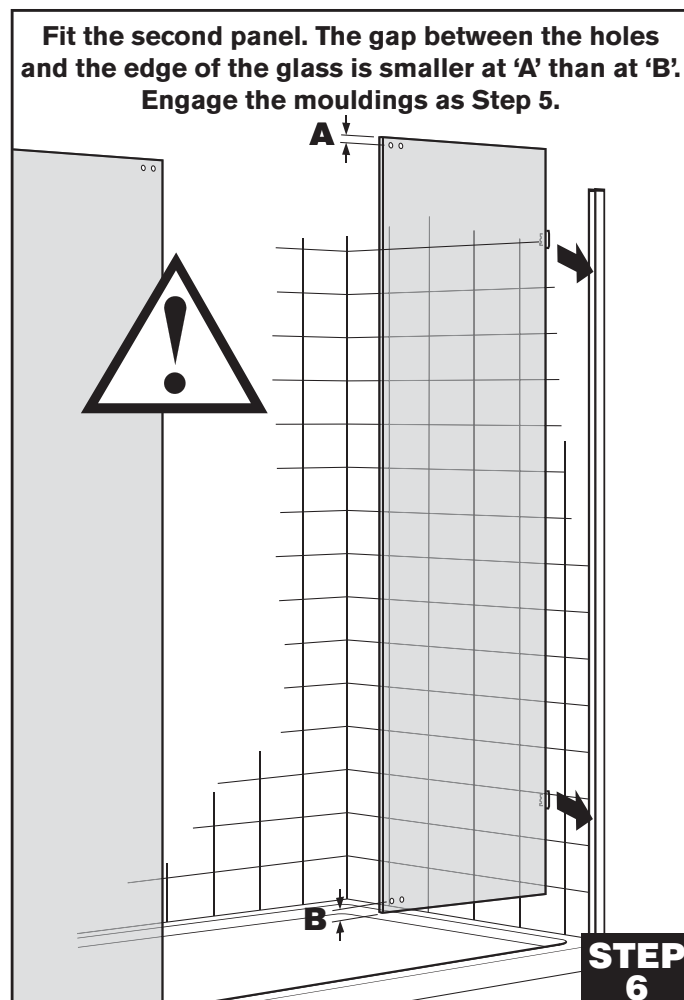
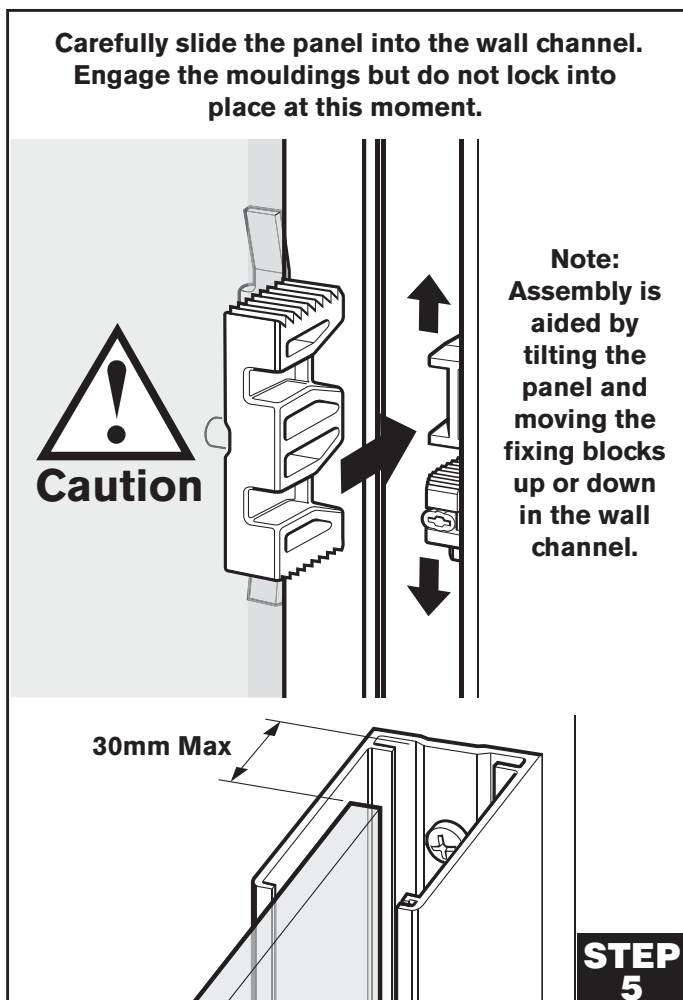
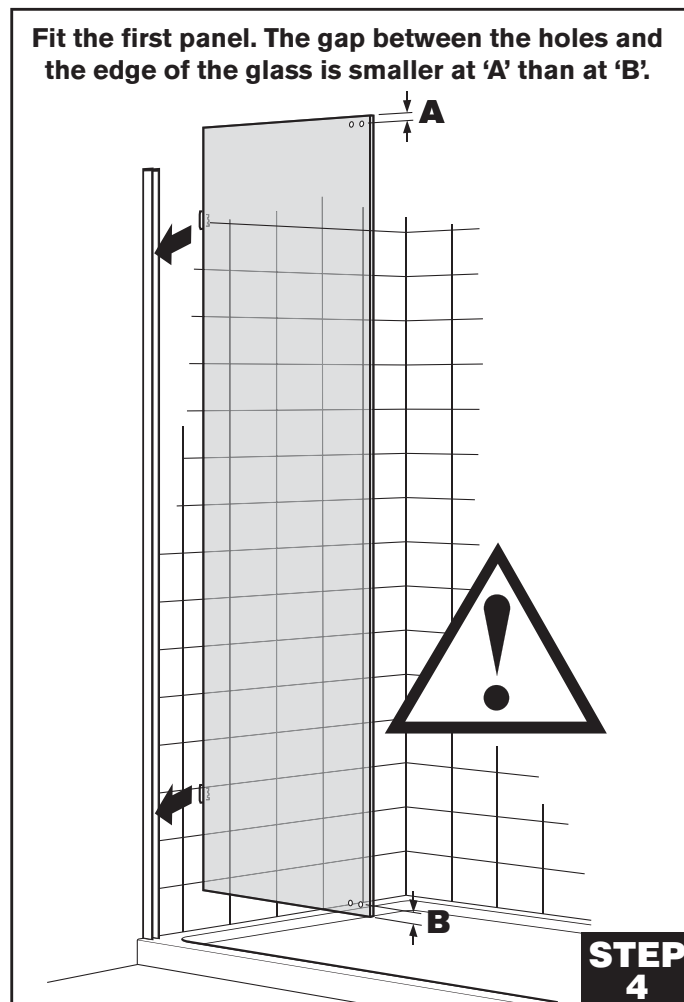
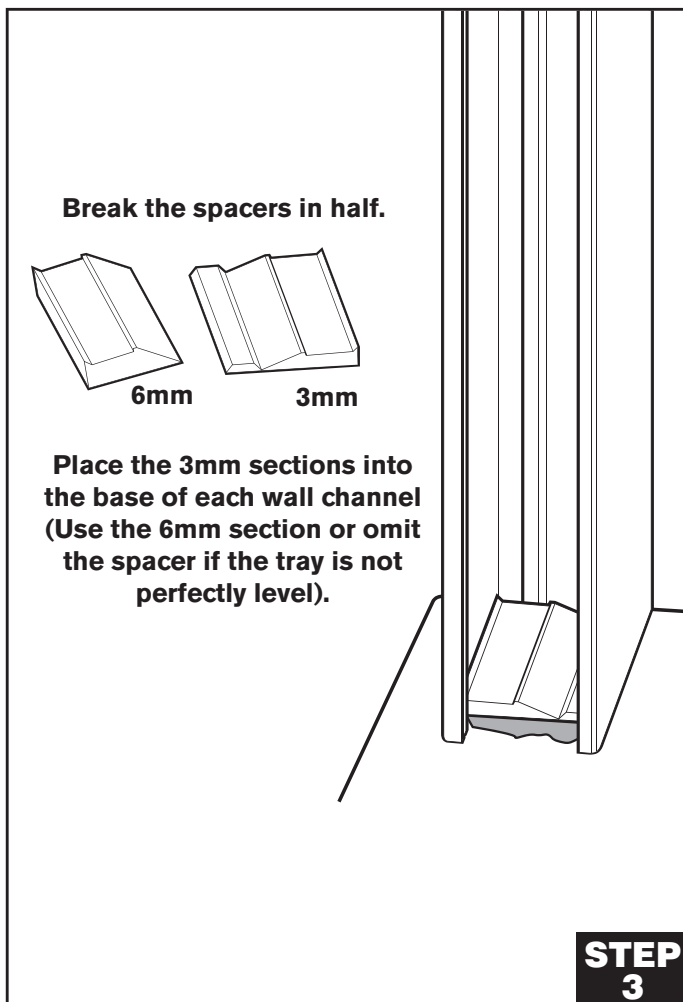
IMPORTANT
Tray **MUST** be level in all planes or the unit will not install properly.

STEP 1

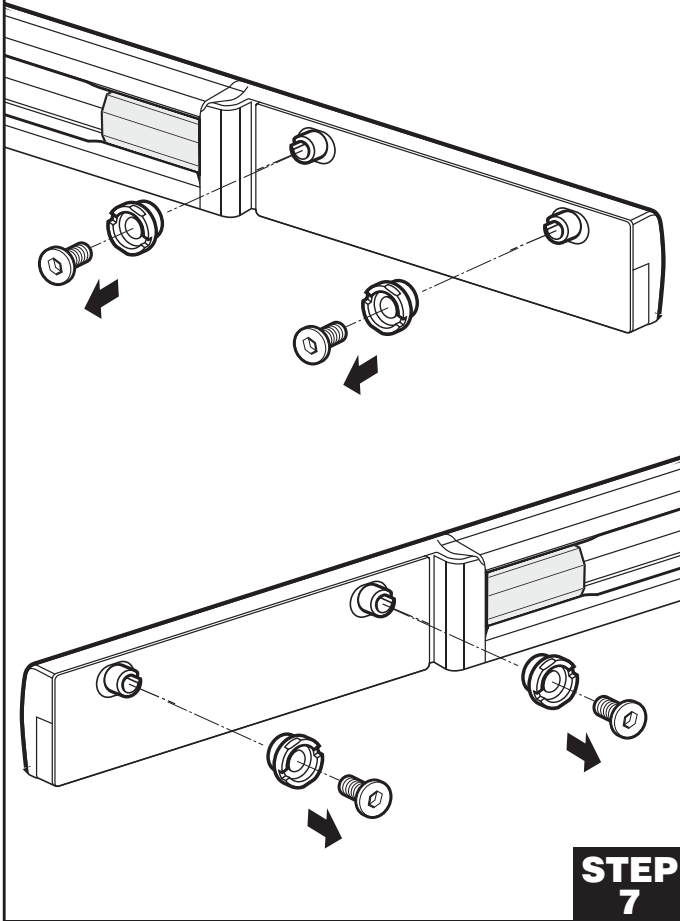
Fit the wall channels to both sides.



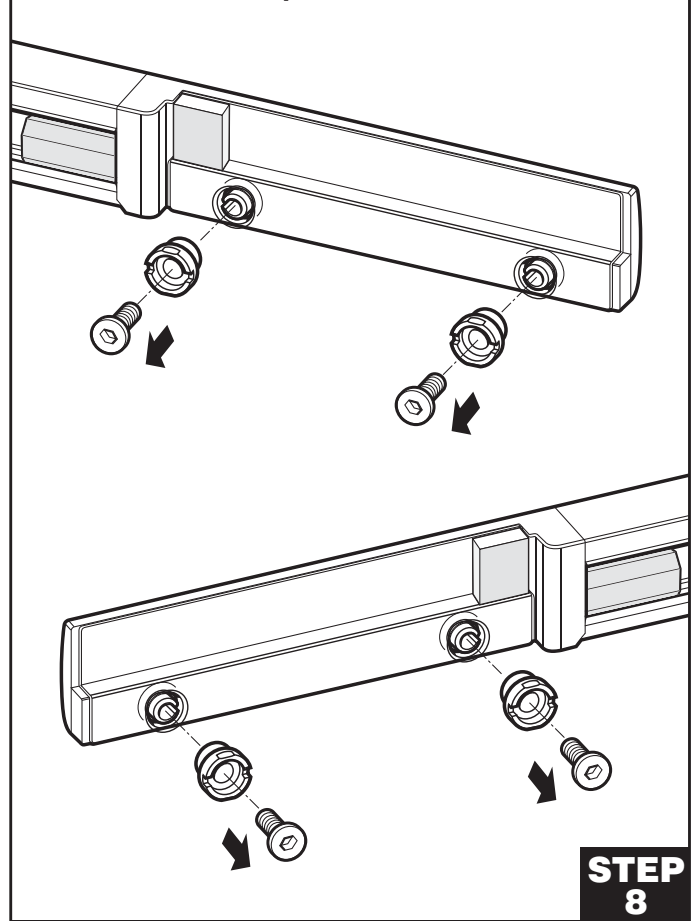
STEP 2



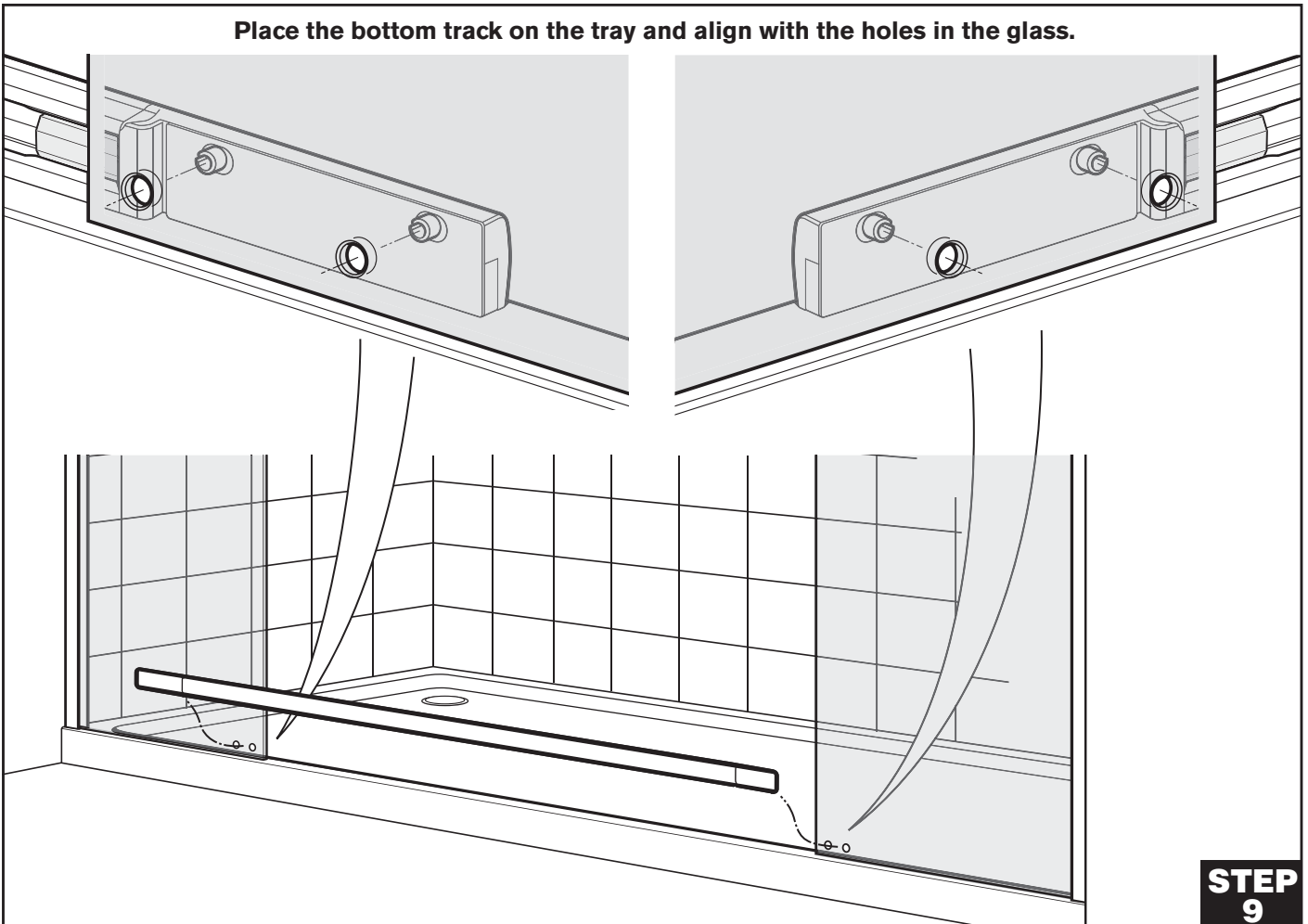
Remove the adjusters from the bottom track
(keep the screws).

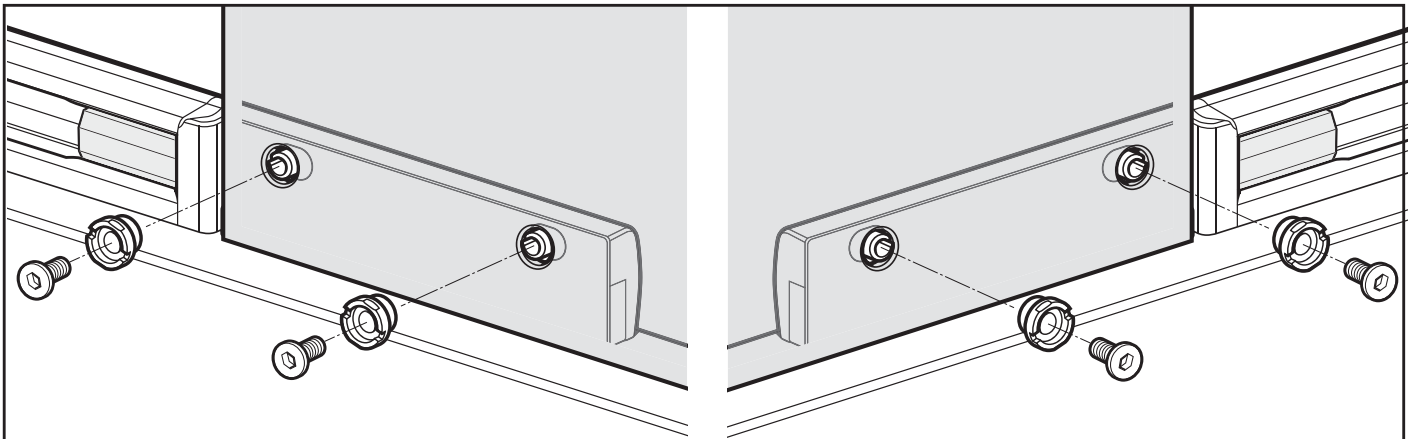


Remove the adjusters from the top track
(keep the screws).

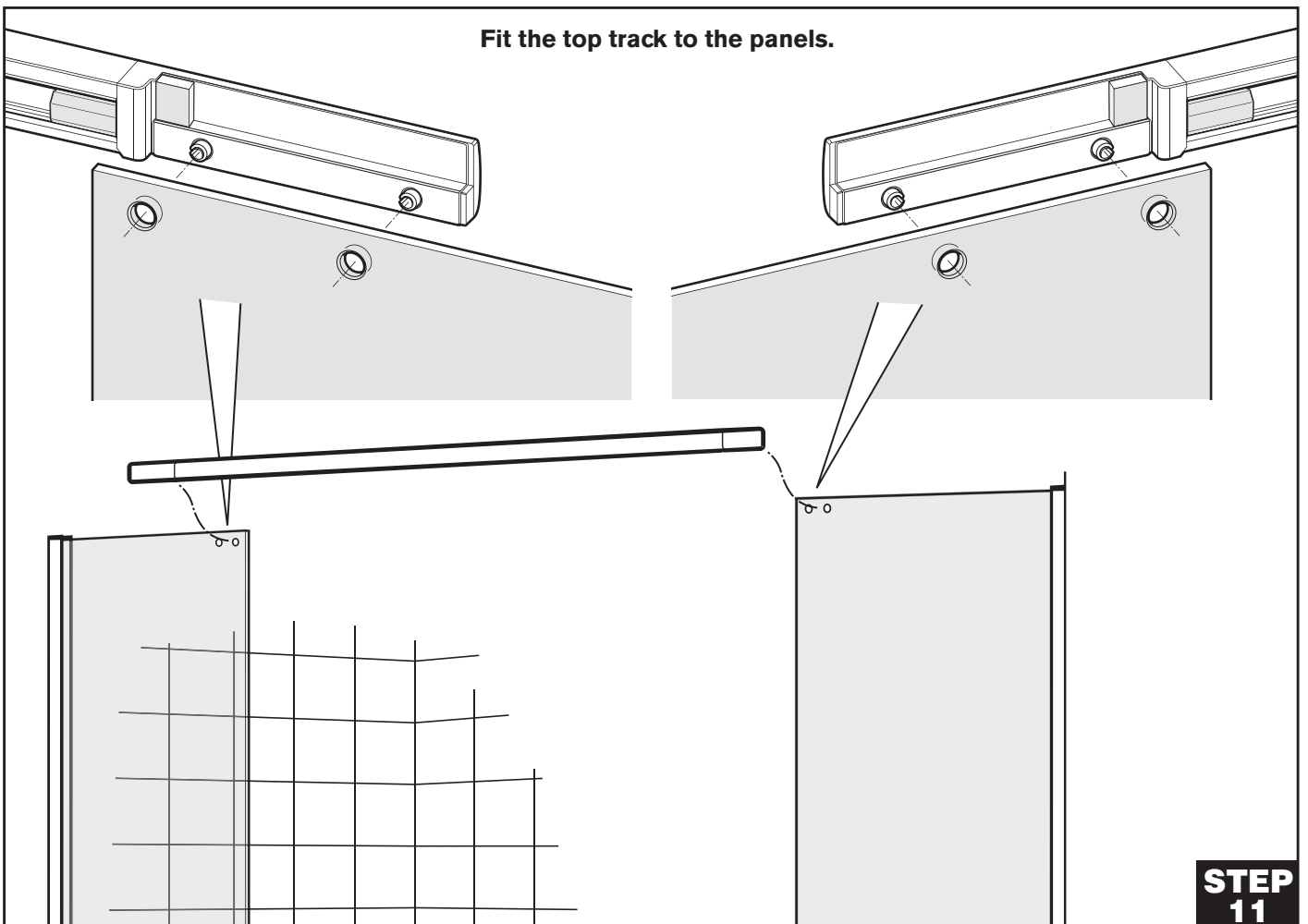
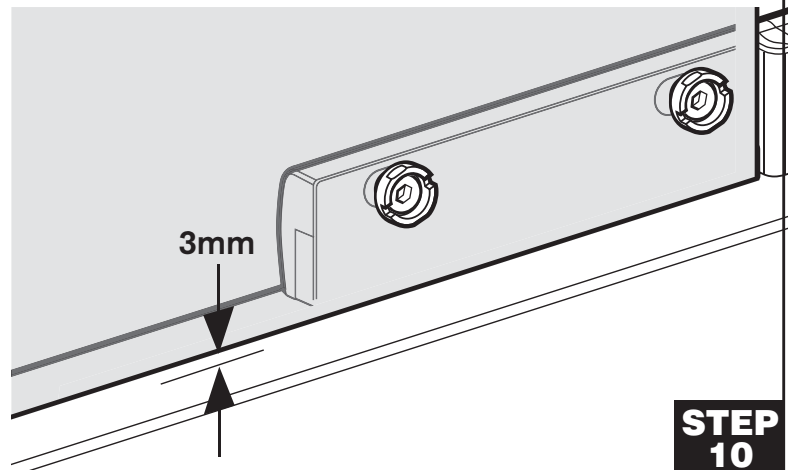


Place the bottom track on the tray and align with the holes in the glass.

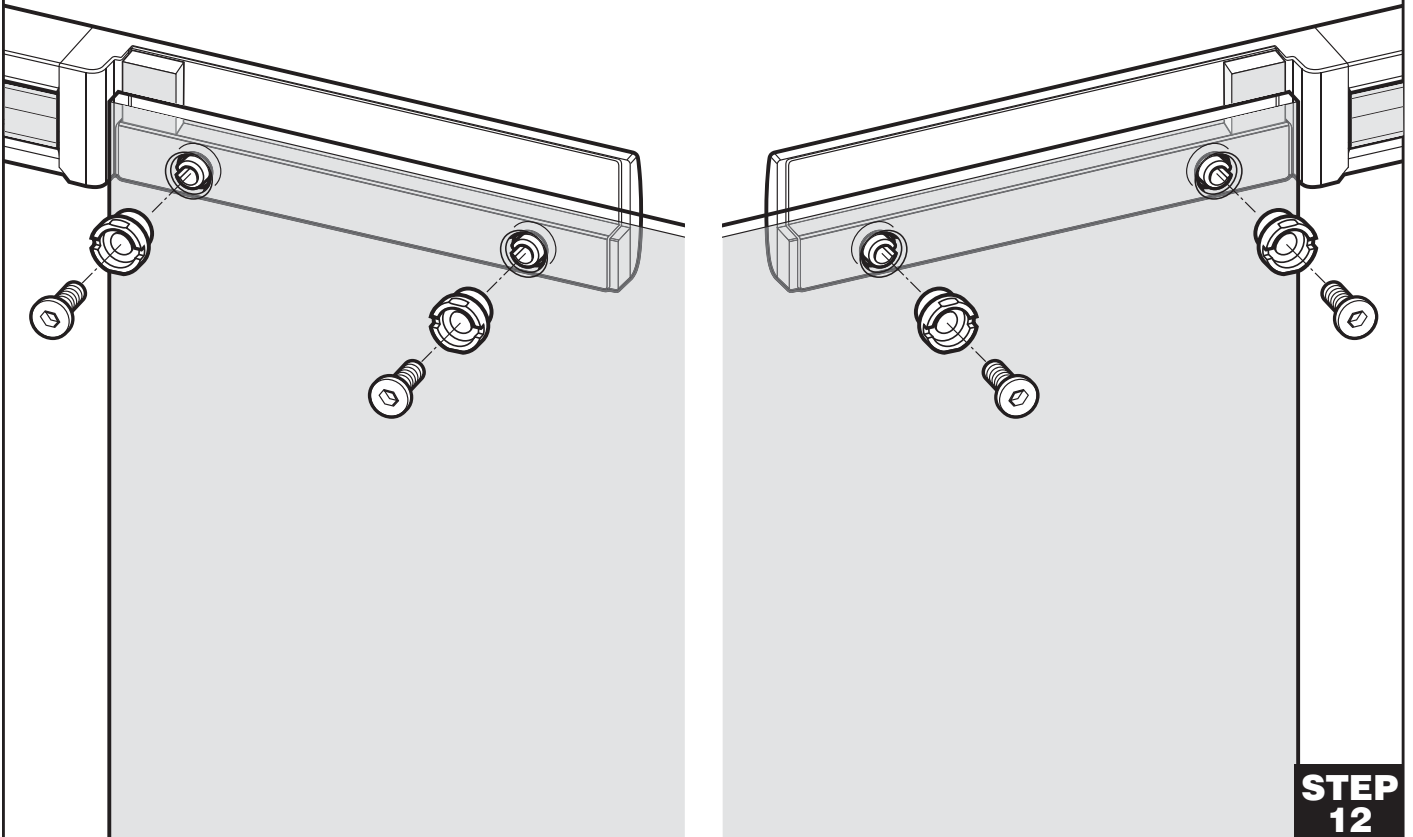




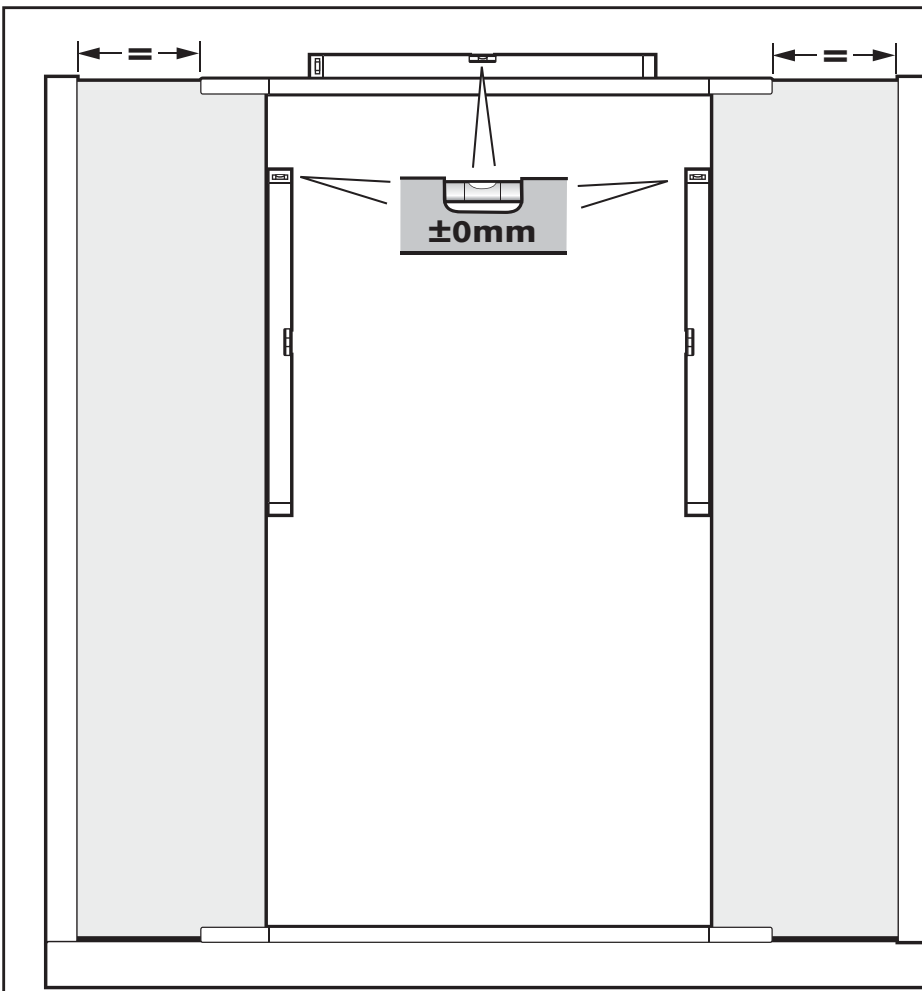
Refit the adjusters to secure the bottom track. Turn the adjusters until the bottom of the glass panels are 3mm above the surface of the tray then fully tighten screws.



Turn the adjusters until the glass is parallel with the casting then tighten screws.



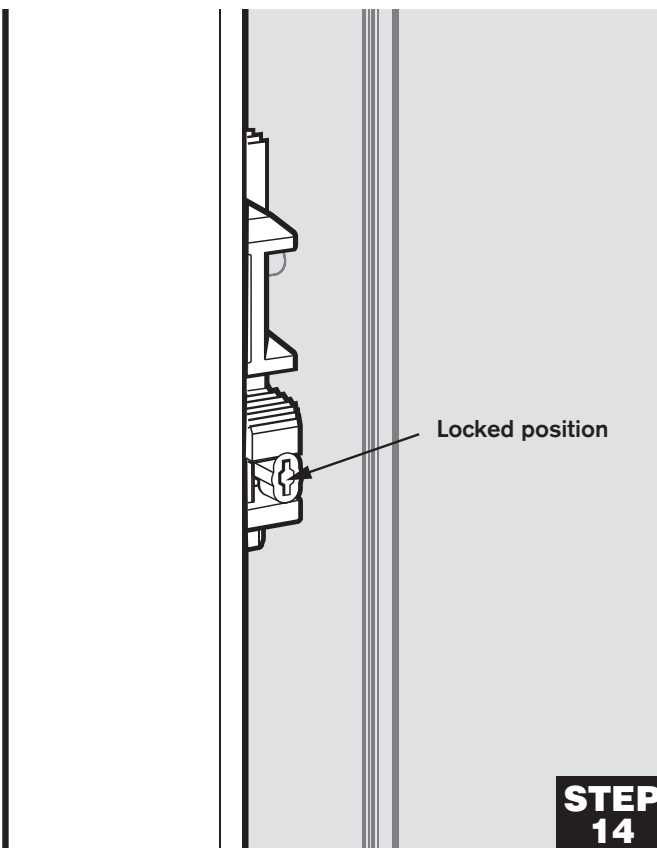
**STEP
12**



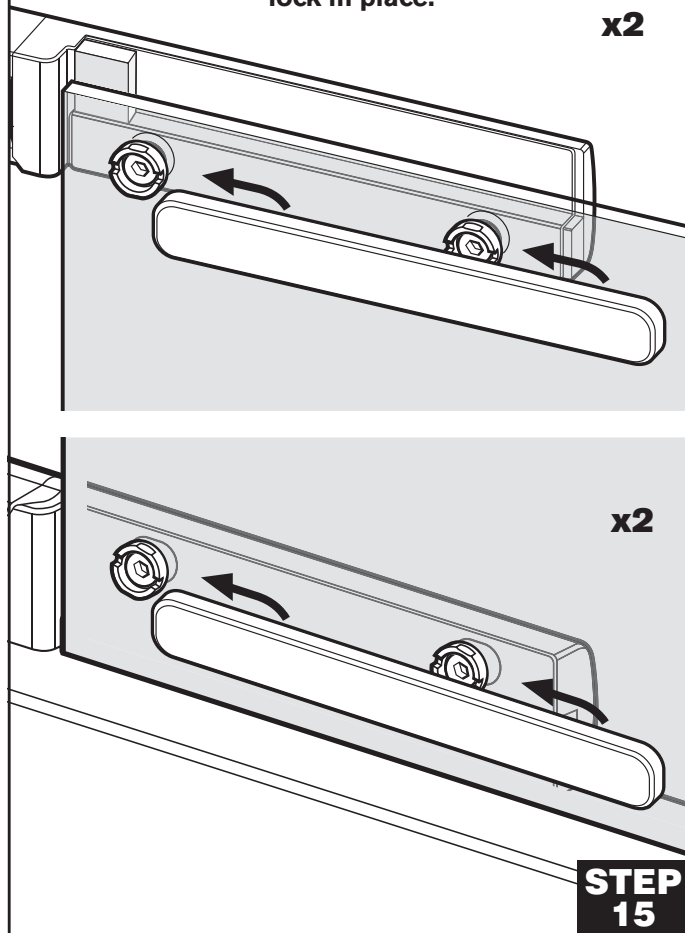
Adjust the assembly until the panels are equally spaced on each side.
Check the panels are vertical and the top track is horizontal.
Adjust if required.

**STEP
13**

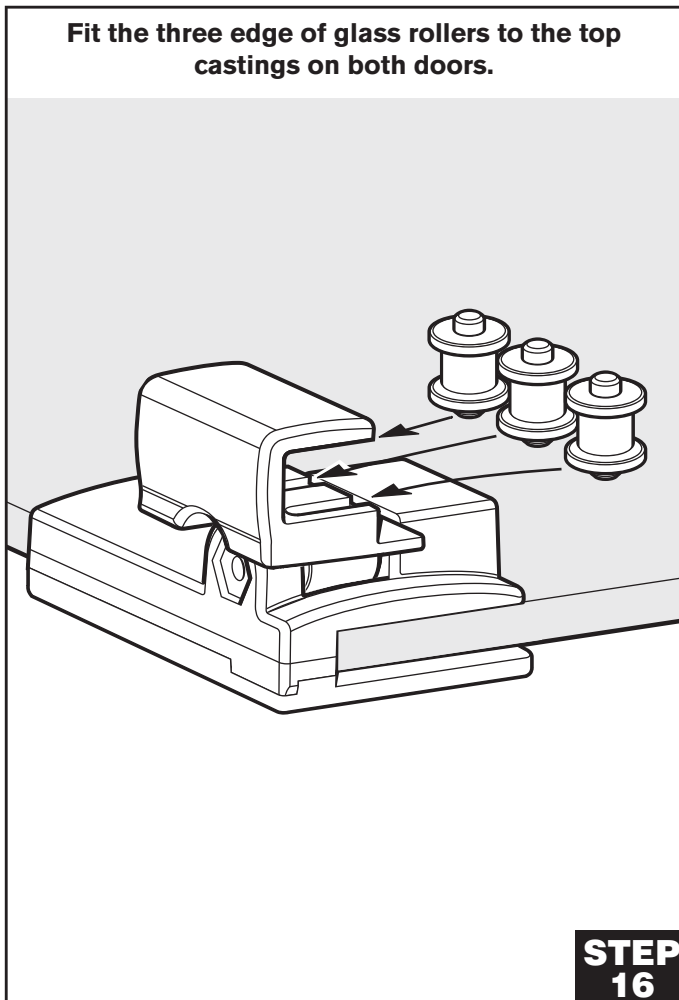
Check that the panels are far enough into the wall channels to lock securely (See Step 5). Adjust if required. Lock the panels into the wall channels by turning the cam through 90°.



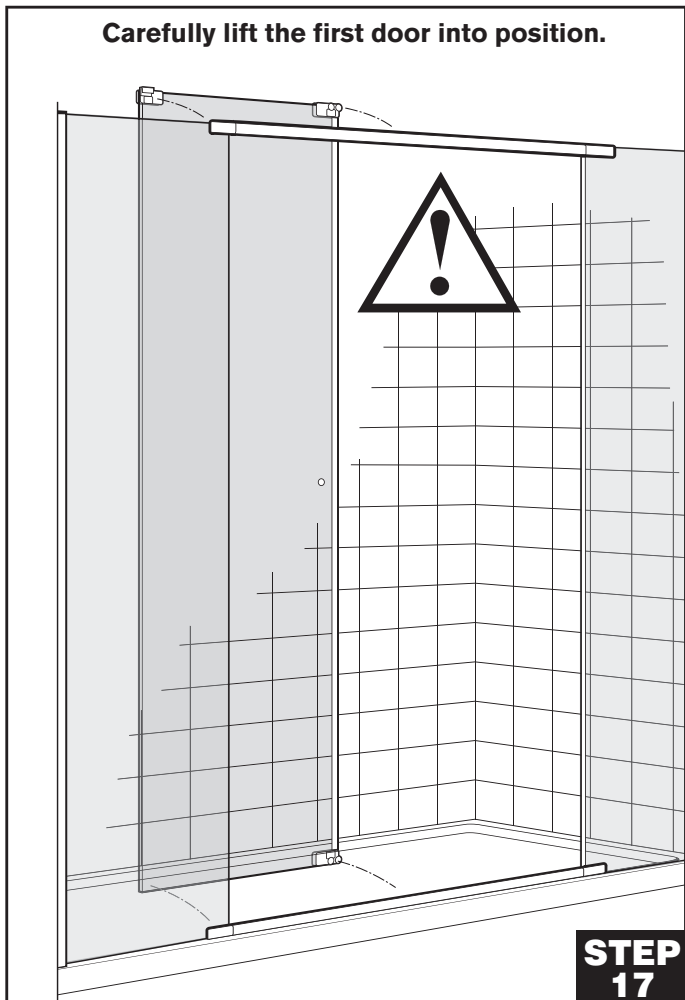
Slide the covers on to the adjusters until they lock in place.



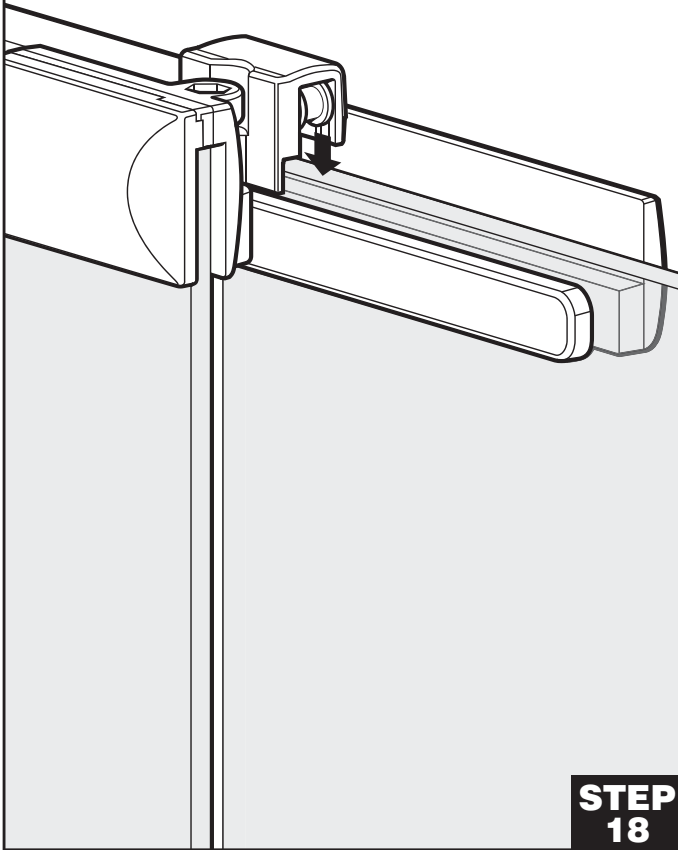
Fit the three edge of glass rollers to the top castings on both doors.



Carefully lift the first door into position.

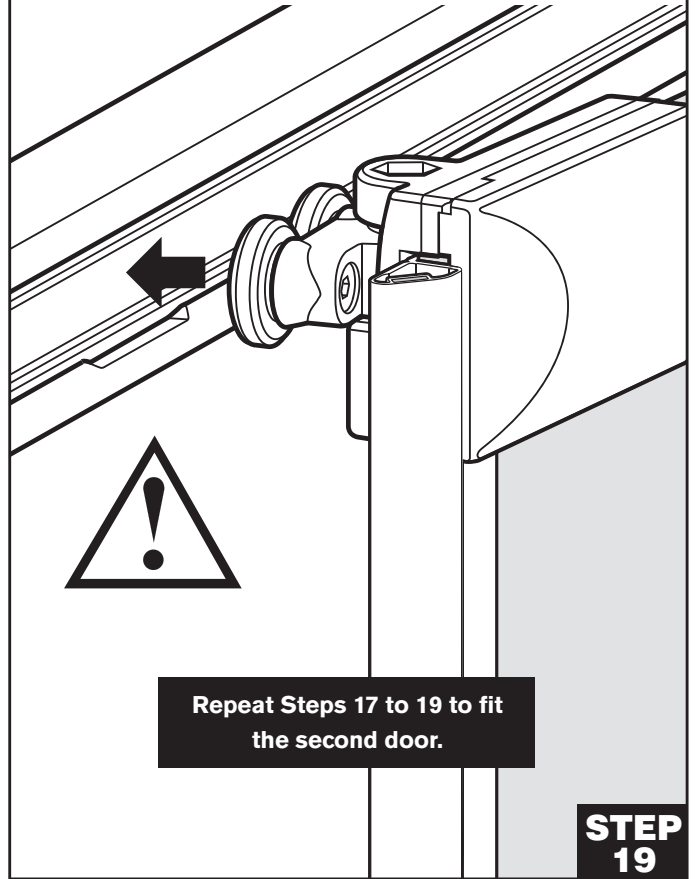


At the panel end the rollers fit on the top face of the glass panel.



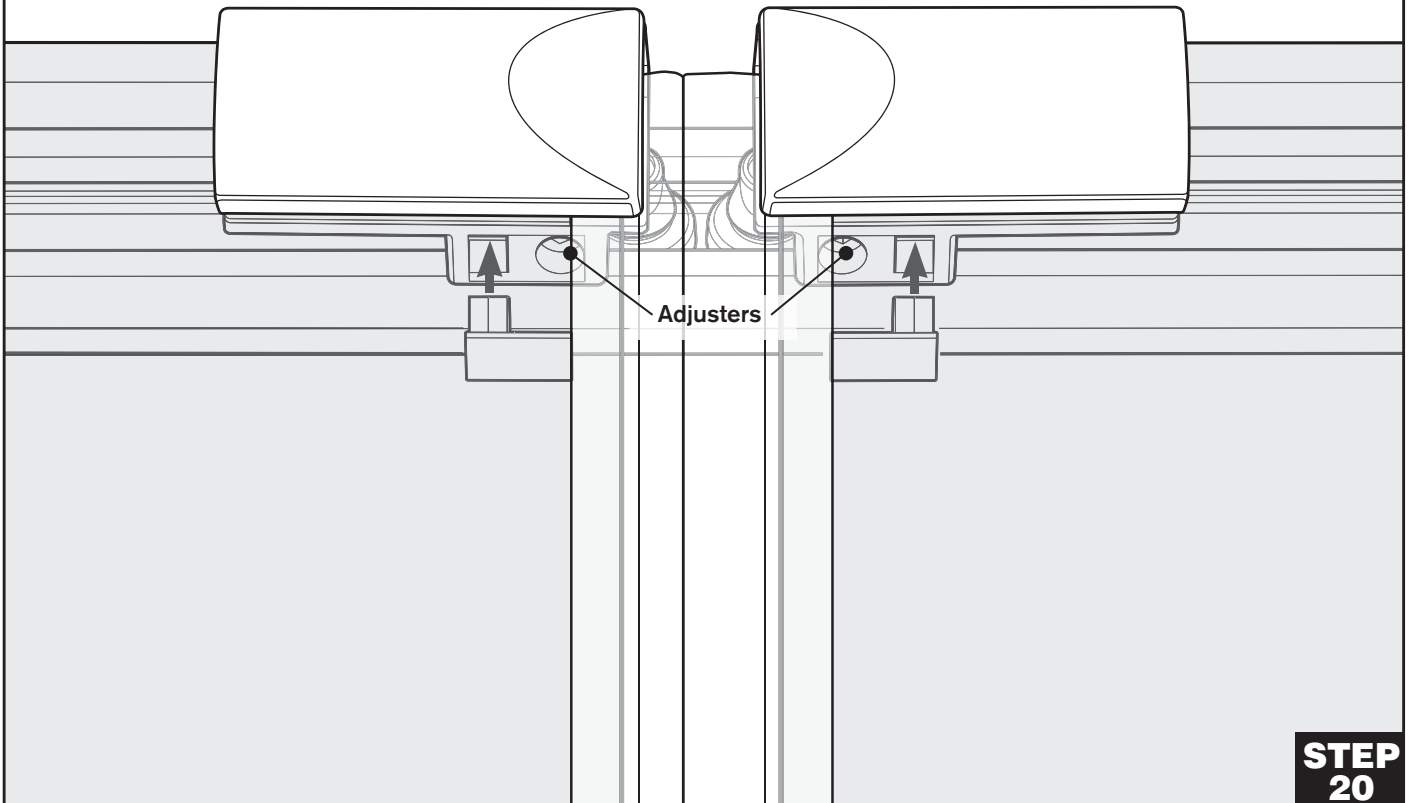
**STEP
18**

Move the door until the rollers align with the slot in the track. Fit the rollers at top and bottom by pushing them through the slot in the tracks.



**STEP
19**

Turn the adjusters on the top roller assemblies until the doors are level with one another and move smoothly. Fit the adjuster caps.

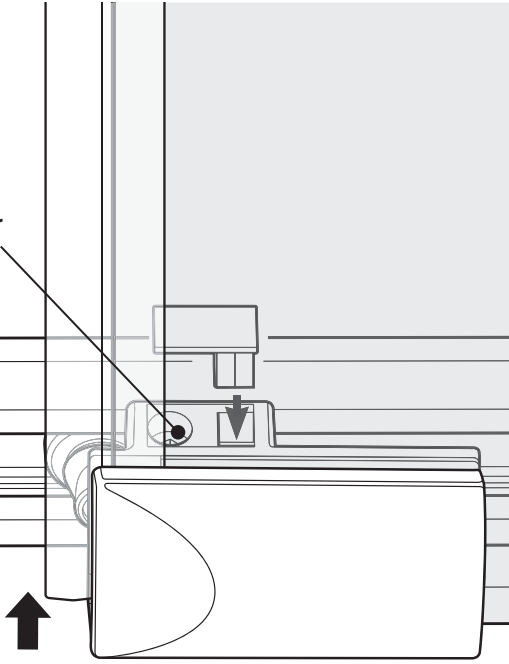


**STEP
20**

Adjust the bottom rollers upwards, so they cannot come out of the slot in the bottom track.
Fit caps after adjustment.

x2

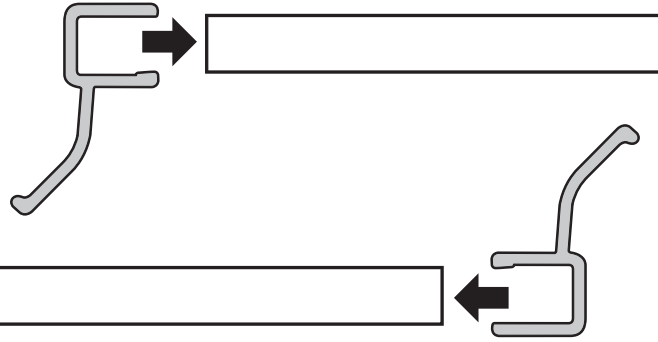
Adjuster



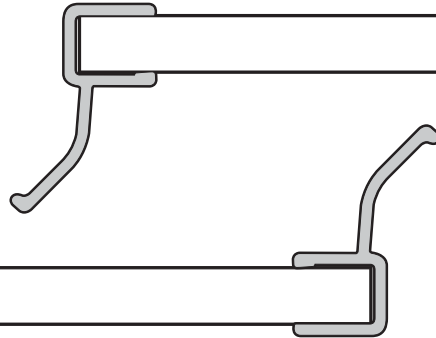
STEP 21

Fit the seals to the edge of the panels and the back edge of the doors.

x2



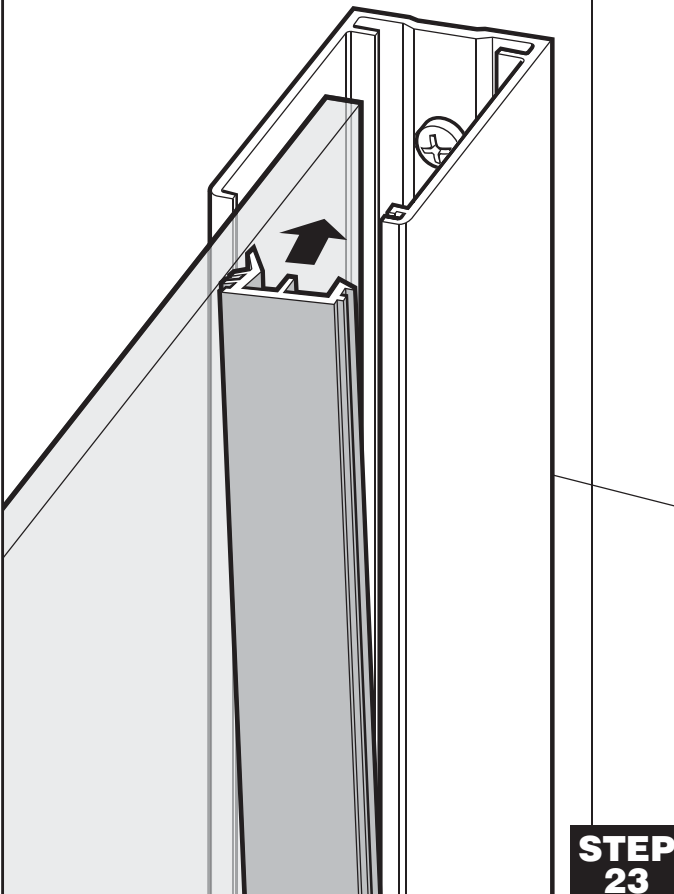
The correct position of the seals when the doors are closed.



STEP 22

Fit the cover strips to the wall channels.

x2



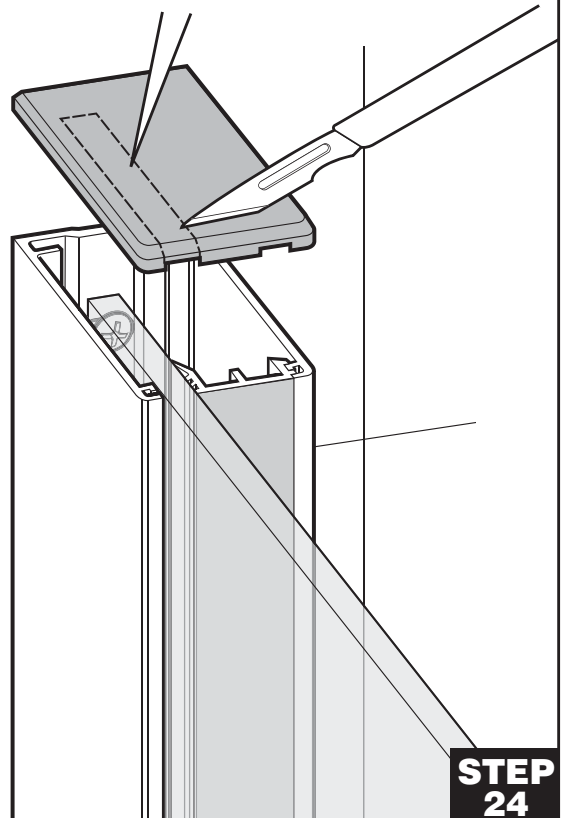
STEP 23

Fit the top caps.

Note:

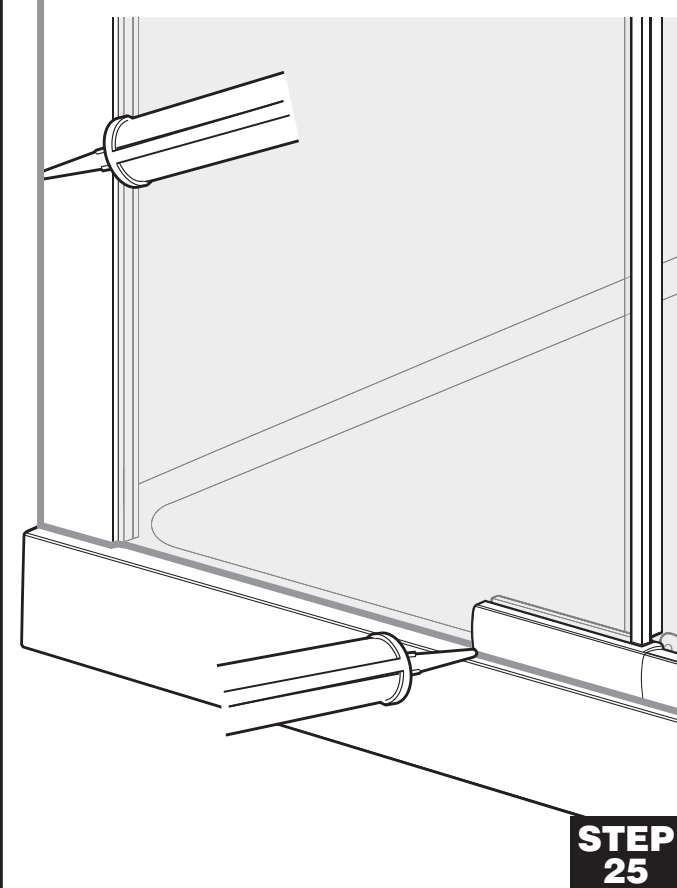
If the glass is higher than the wall channel, trim away the recessed section of the top cap.

x2



STEP 24

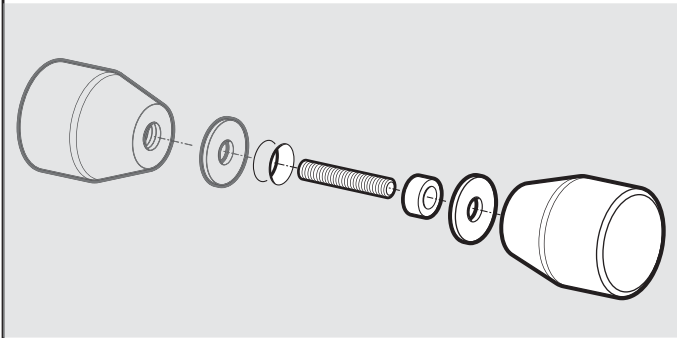
Lay a thin bead of sealant between the wall channels and the wall, the glass panels and tray and the bottom track and tray.



**STEP
25**

Fit the door handle.

x2



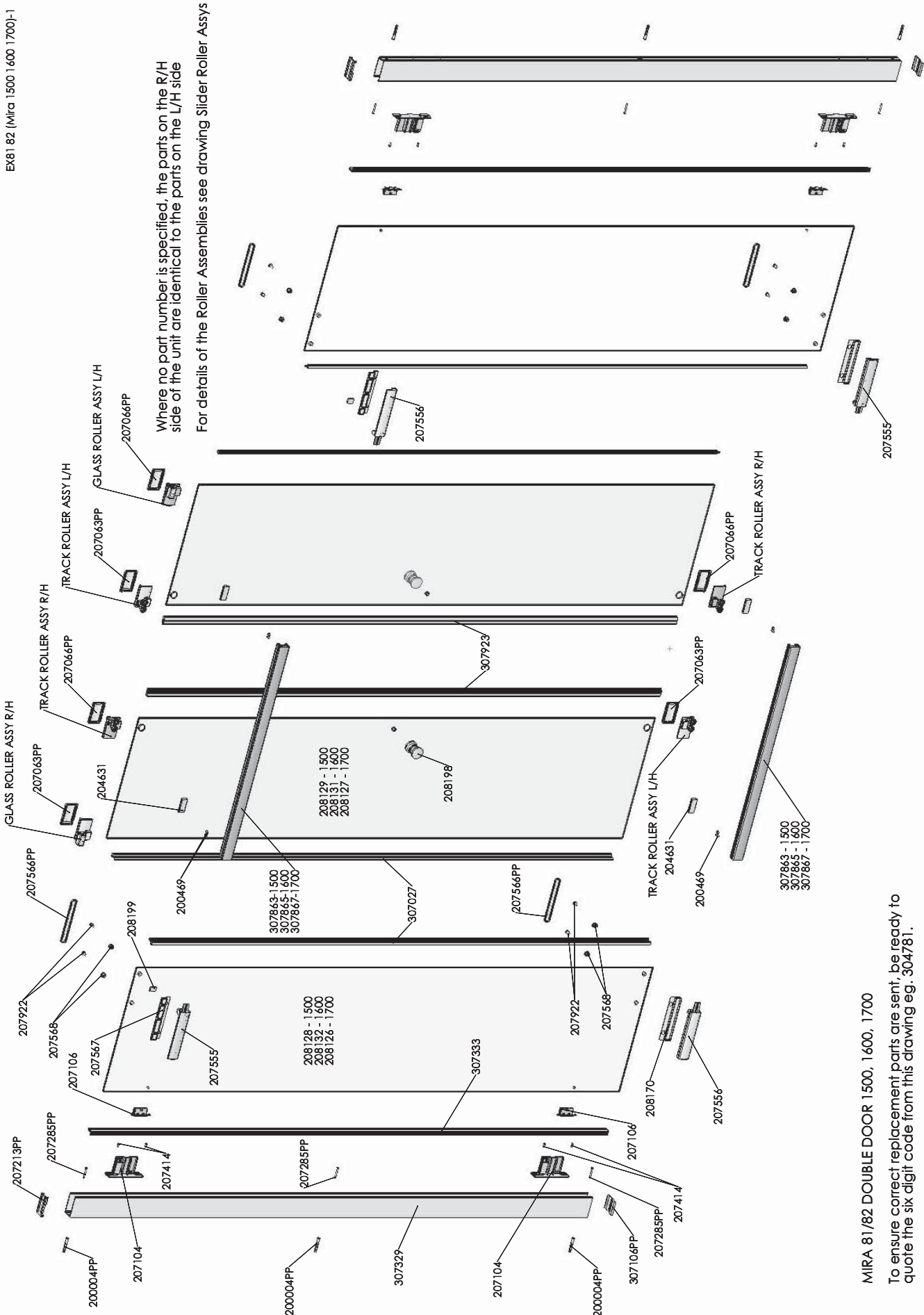
Do not use the enclosure for at least 24 hours.



**STEP
26**

Spare Parts

EX81 82 (Mira 1500 1600 1700)-1



Where no part number is specified, the parts on the R/H side of the unit are identical to the parts on the L/H side
For details of the Roller Assemblies see drawing Slider Roller Assys

MIRA 81/82 DOUBLE DOOR 1500, 1600, 1700

To ensure correct replacement parts are sent, be ready to quote the six digit code from this drawing eg. 304781.

PP after a part means it is contained in the parts pack

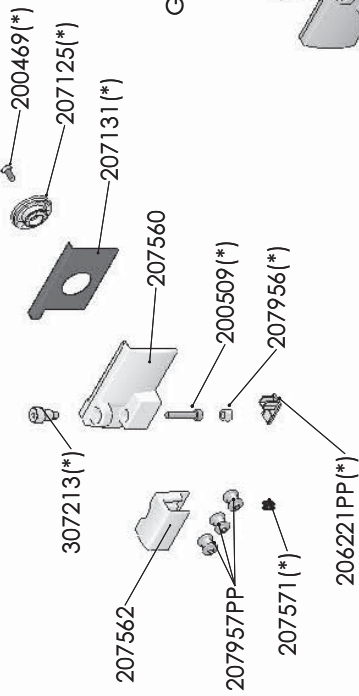
Spare Parts

Slider Roller Assys-1

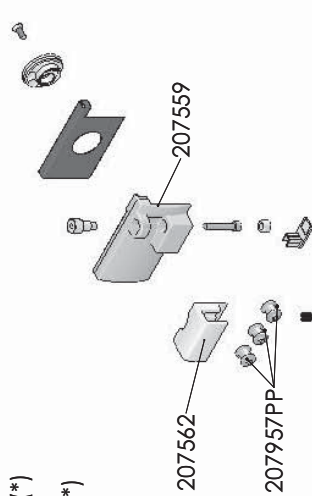
MIRA FLIGHT SFE 77, 78, 79, 84
SLIDER ROLLER ASSEMBLIES

To ensure correct replacement parts are sent, be ready to quote the six digit code from the drawing, eg. 304781

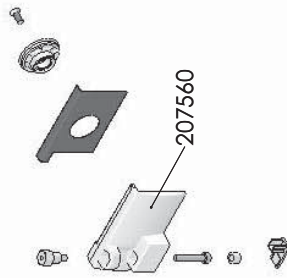
GLASS ROLLER ASSY R/H



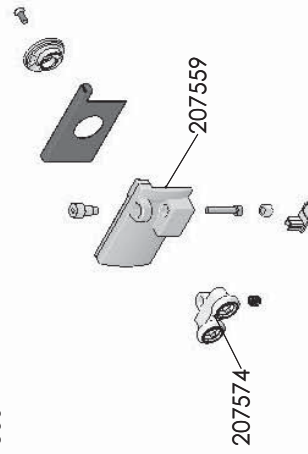
GLASS ROLLER ASSY L/H



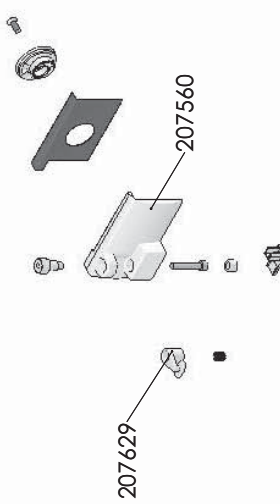
TRACK ROLLER ASSY L/H



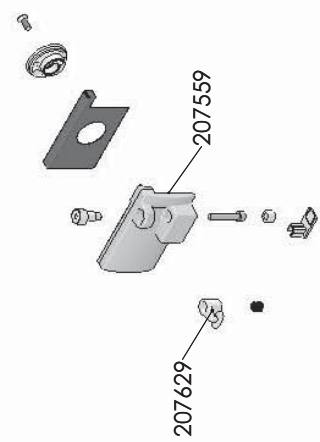
TRACK ROLLER ASSY R/H



GUIDE ROLLER ASSY L/H



GUIDE ROLLER ASSY R/H



Parts marked with (*) are common across all assemblies
Parts marked PP are contained in the Parts Pack

Guarantee of Quality

Mira Showers guarantee your product against any defect in materials or workmanship, provided that it is installed and maintained in accordance with the instructions given in this guide. To validate the guarantee, please return your completed registration card within 30 days of product installation. Within the guarantee period we will resolve defects, free of charge, by repairing or replacing parts or modules as we may choose. To be free of charge, service work must only be undertaken by Mira Showers or our approved agents. Service under this guarantee does not affect the expiry date of the guarantee. The guarantee on any exchanged parts or product ends when the normal product guarantee period expires.

Not covered by this guarantee:

Damage or defects arising from incorrect installation, improper use or lack of maintenance, including build-up of limescale. Damage or defects if the product is taken apart, repaired or modified by any persons not authorised by Mira Showers or our approved agents. This guarantee is in addition to your statutory and other legal rights.

What to do if something goes wrong

If when you first use your enclosure, it does not function correctly, first contact your installer to check that installation is satisfactory and in accordance with the instructions in this manual. We are on hand to offer you or your installer any advice you may need. Should this not resolve the difficulty, simply contact our Customer Services Team who will give every assistance and, if necessary, arrange for our service engineer to visit. If the operation of your enclosure declines, please call our Customer Services Team to talk the difficulty through, request a service under guarantee if applicable, or take advantage of our comprehensive After-Sales service. As part of our quality and training programme calls may be recorded or monitored. Our Customer Services Team is comprehensively trained to provide every assistance you may need: help and advice, spare parts or a service visit.

Spare Parts

We maintain an extensive stock of spares and aim to provide support throughout the product's expected life. Genuine Mira spares can be purchased direct from Customer Services. Spare parts will normally be despatched within three to five working days. Payment can be made using most major Credit or Debit cards at the time of ordering. Should payment by cheque be preferred, a pro-forma invoice will be sent. All spares are guaranteed for 12 months from the date of purchase.

Service / Repairs

Our Service Force is available to provide a quality service at a reasonable cost. You will have the assurance of a Mira trained engineer/agent, genuine Mira spare parts and a 12 month guarantee on the repair. Payment should be made directly to the engineer via cheque on the day, alternatively an invoice will be sent after the visit if you would prefer to pay via credit or debit card.

To Contact Us

England, Scotland, Wales and Northern Ireland:

Mira Enclosures Technical Helpline

Telephone: 0844 571 5000 Mon to Fri 8:00 am - 5:30 pm

Sat 8.30 am - 3.30 pm

E-mail: technical@mirashowers.com

Fax: 01242 282595

Post: Cromwell Road, Cheltenham, Gloucestershire, GL52 5EP

Mira is a registered trade mark of Kohler Mira Limited.

The company reserves the right to alter product specifications without notice.

www.mirashowers.co.uk

mira
SHOWERS



FM 14648