



AFTERCARE INSTRUCTIONS

Your fitting has a high quality finish and should be treated with care to preserve the visible surfaces. All surface finishes will wear if not cleaned correctly, the only safe way to clean your mixer is to wipe with a soft damp cloth. Stains can be removed using washing up liquid. All bath cleaning powders and liquids will damage the surface of your fitting even the non-scratch cleaners.

GUARANTEE

All products are manufactured to the highest standards and a 5 year guarantee covers any defect in manufacture. As gold and special effect finishes are softer than chromium plate, special care must be taken when cleaning; a 3 year guarantee covers these finishes.

NOTE: The 5 year guarantee on the valves is invalidated if damaged by any waterborne debris.

In the interests of continuous product development we reserve the right to alter specification as necessary.

PRODUCT CODE: N LBSM C, N LBSM G
TELEPHONE HELPLINE: 0844 701 6273

Bristan Group Ltd
Birch Coppice Business Park
Dordon
Tamworth
Staffordshire
B78 1SG
UK
A Masco Company

Web Site: www.bristan.com
Telephone: 0844 701 6274
Facsimile: 0844 701 6275
Email: enquire@bristan.com

(FI N LBSM)

(Rev. D1)

(U)

BRISTAN

1901 Luxury Bath Shower Mixer

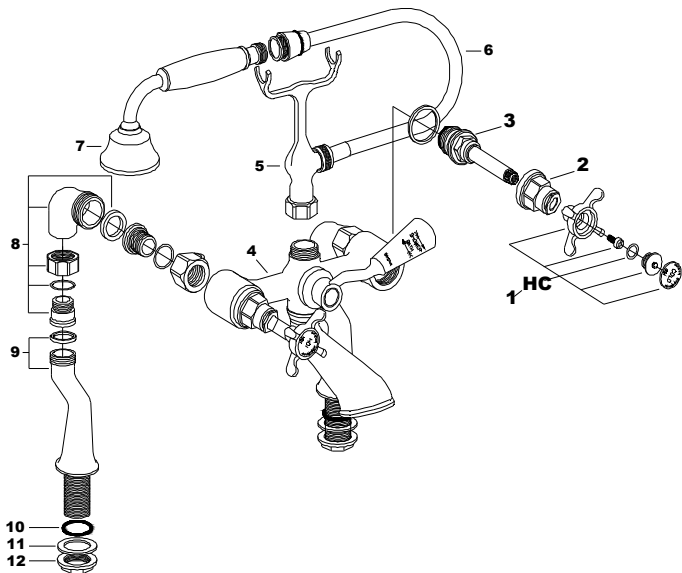
Fitting Instructions

Please keep these instructions for future reference.

WATER PRESSURE

This mixer is suitable for use at all supply pressures. However for optimum use both the hot and cold supplies should be reasonably balanced. If the fitting is installed at low pressure (tank fed), then the minimum distance from the highest installed position of the shower head to the underside of the cold tank should be 1 metre to ensure adequate shower performance.

This mixer should be installed in compliance with the Water Regulations. Where the supplies are unbalanced, i.e. hot water from cylinder tank / cold from the mains, approved check valves must be fitted in the supply pipes. For further details contact your Local Water Authority.



CONTENTS

- | | | |
|--------------------|-------------------|--------------------|
| 1. Handle Assembly | 5. Cradle | 9. Leg Assembly |
| 2. Shroud | 6. Hose | 10. Washer |
| 3. Valve | 7. Handset | 11. Backnut washer |
| 4. Body Assembly | 8. Elbow Assembly | 12. Backnut |

INSTALLATION

1. Identify all components and check for completeness, particularly before arranging installation
2. Fit the legs (9) to the body (4) using the large sealing washers.
3. Fit the mixer body (4) to the bath using the backnuts (12) and backnut washers (11), then connect the hot and cold water supplies.
4. Fit the cradle (5), if not already fitted, using the large sealing washer.
5. Fit the hose (6) to the cradle (5) and the handset (7) using the small sealing washers.
6. Use the handles (1) Fully open both valves, letting them run for a few minutes to flush the system.
7. Operate the mixer in both bath and shower mode. To switch from bath to shower mode, move the diverter handle from one extreme to the other.
8. Check all joints and connections for leaks.
9. See over the page for aftercare instructions.

MAINTENANCE

1. Turn off the water supply.
2. Remove handles (1) from shroud (2) by removing the indices and then unscrewing the screw. Pull the handle (1) off, then unscrew shroud (2) from valve (3) and then remove it.
3. Once removed, carefully clean seating and rubber washer.
4. Replace all of the above then turn on the water supply.
5. If problem persists contact our helpline quoting the product code overleaf.

Please Note: In the unlikely event you find a part missing please contact our Customer Service Helpline on 0844 701 6273 or email enquire@bristan.com for immediate despatch of part.