

AFTERCARE INSTRUCTIONS

Your fitting has a high quality finish and should be treated with care to preserve the visible surfaces. All surface finishes will wear if not cleaned correctly, the only safe way to clean your waste is to wipe with a soft damp cloth. Stains can be removed using washing up liquid. All bath cleaning powders and liquids will damage the surface of your fitting, even non-scratch cleaners.

GUARANTEE

All products are manufactured to the highest standards and a 5 year guarantee covers any defect in manufacture. As gold and special effect finishes are softer than chromium plate, special care must be taken when cleaning; a 3 year guarantee covers these.

NOTE: The 5 year guarantee on the valves is invalidated if damaged by any waterborne debris.

In the interests of continuous product development we reserve the right to alter specification as necessary.

TELEPHONE HELP LINE: 0844 701 6273

Bristan Group Ltd
Birch Coppice Business Park
Dordon
Tamworth
Staffordshire
B78 1SG
UK
A Masco Company

Web Site: www.bristan.com
Telephone: 0844 701 6273
Facsimile: 0844 701 6275
Email: enquire@bristan.com
(F I ON BF)

(Rev. D4)

(U)

BRISTAN

Options Bath Filler

Fitting Instructions & Contents List

**Please keep these instructions for future reference
and request of replacement parts.**

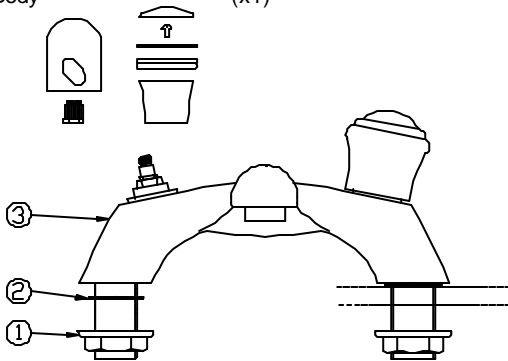
WATER PRESSURE

This mixer is suitable for use at all supply pressures. However for optimum use both the hot and cold supplies should be reasonably balanced. If the fitting is installed at low pressure (tank fed), then the minimum distance from the outlet of the nozzle to the underside of the cold tank should be 2 metres to ensure adequate performance. This equates to a minimum operating pressure of 0.2 bar.

This mixer should be installed in compliance with Water Regulations. Where the supplies are unbalanced, i.e. hot water from the cylinder tank / cold from the mains, approved check valves must be fitted in the pipes. For further details contact your Local Water Authority.

CONTENTS

1. Backnut (x2)
2. Rubber Washer (x2)
3. Body (x1)



Please Note: In the unlikely event you find a part missing please contact our Customer Service Help line on 0844 701 6273 for immediate dispatch of part.

INSTALLATION

1. Identify all components and check for completeness, particularly before arranging fitting.
2. Fit the mixer body to the bath securing the washers (2) and backnuts (1) below the bath, then connect the hot and cold water supplies.
3. Fit tap handles. Fitting varies depending on handle. Either disassemble handle and use screw hidden under cap or secure plastic adaptor to valve with screw and then push on handle.
NOTE: Handles must be bought separately.
4. Fully open the mixer valves, letting them run for a few minutes and check all joints and connections for leaks.
5. See over the page for aftercare instructions.

MAINTENANCE

If the fitting begins to drip:

1. Isolate water supplies.
2. Disassemble/remove handle, unscrew retaining screw and lift off the handle.
3. Unscrew the valve. Carefully clean seating, rubber washer and/or ceramic disc.
4. Refit the valves, handles and tighten retaining screw. Replace the top of the handle or handle indices.
5. If problem persists contact our helpline quoting the product code.