



For latest prices and delivery to your door visit MyTub Ltd 0845 303 8383 www.mytub.co.uk

## AFTERCARE INSTRUCTIONS

Your fitting has a high quality finish and should be treated with care to preserve the visible surfaces. All surface finishes will wear if not cleaned correctly, the only safe way to clean your fitting is to wipe with a soft damp cloth. Stains can be removed using washing up liquid. All bath cleaning powders and liquids will damage the surface of your fitting even the non-scratch

## GUARANTEE

All products are manufactured to the highest standards and 5-year guarantee covers any defect in manufacture. As gold and special effect finishes are softer than chromium plate, special care must be taken when cleaning, a 3-year guarantee covers these finishes.

Any part found to be defective during the above guarantee period will be replaced without charge providing that the product has been installed in accordance with our instructions, used as intended and maintained/serviced as recommended.

In the unlikely event that any problems are encountered with this product's performance on installation, you must obtain guidance/authorisation from our Customer Service Department before any remedial action is taken and be able to supply proof and date of purchase.

The guarantee excludes damage caused by accident, misuse or neglect and does not cover the following:

- Those components subject to wear and tear such as 'O' rings and washers etc,
- Damage caused by faulty installation,
- Damage caused by any waterborne debris,
- Damage caused by improper cleaning products,
- Damage caused by the use of non-Bristan parts,
- The product being used for a purpose other than intended.

The company reserves the right, in the event of a claim not covered by the guarantee, to charge the claimant for parts and labour at current rates. This guarantee is given in addition to and does not affect your statutory rights.

*In the interests of continuous product development we reserve the right to alter the specification as necessary.*

**PRODUCT CODE: PM SP C**

**TELEPHONE HELP LINE! +44 (0) 870 4425553**

Bristan Limited  
Birch Coppice Business Park  
Dordon  
Tamworth  
Staffordshire  
B78 1SG  
UK

Web site: [www.bristan.com](http://www.bristan.com)  
Telephone: +44 (0) 870 4425556  
Facsimile: +44 (0) 870 4425554  
Email: [enquire@bristan.com](mailto:enquire@bristan.com)



# Prism Shower Pole (PM SP C)

## Fitting Instructions & Contents List



Before starting any installation project, consider "Safety" first. Look for the "safety note" sign and read the safety advice.

Prior to drilling into walls, check there are no hidden electrical wires, cables or water supply pipes with the aid of an electronic detector. If you use power tools do not forget:

- Wear eye protection
- Unplug equipment after use

**Please leave these instructions with the user**

## WATER PRESSURE

This product is suitable for use at all supply pressures up to a maximum of 8 bar. If the fitting is installed at low pressure (tank fed), then the minimum distance from the underneath of the rose to the underside of the cold tank should be 2 metres to ensure adequate performance. Installation should be in compliance with Water Regulations. For further details contact your Local Water Authority.

## INSTALLATION

This product is designed to be used in conjunction with other products, such as the shower valves, blending valves and stopcocks from the Bristan ranges in order to create a system to suit your requirements.

## COMPONENTS

1. Rigid riser (x1)
2. Inlet tail (x1)
3. Wall bracket (x1)
4. Fixing screw (x1)
- 5/6 Grub screws (x2)
7. Rose, swivel and washer (x1 of each)
8. Sliding bracket (x1)
  - Handset (x1)
  - Hose (x1)
  - Small sealing washer (x2)

## INSTALLATION

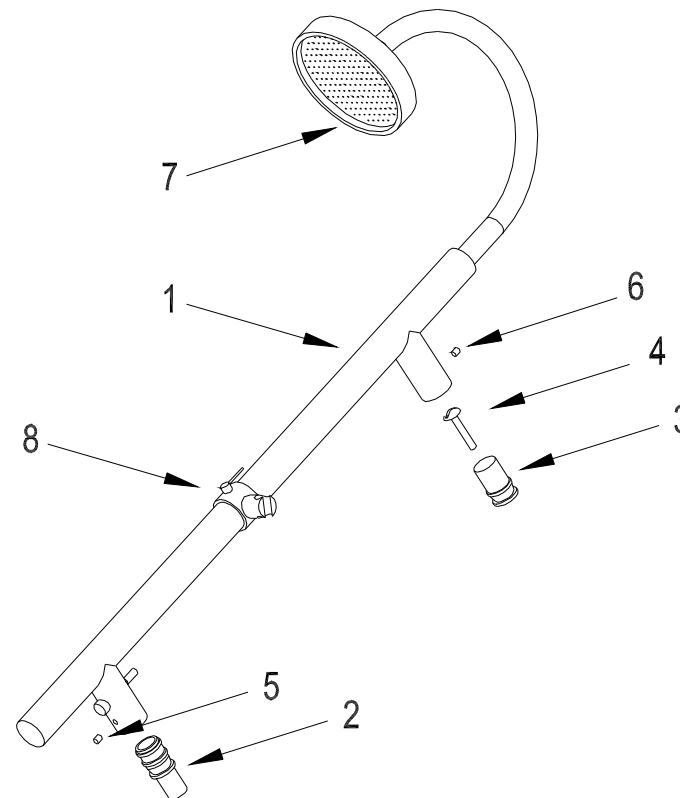
This product should be arranged in your system with a supply of mixed water.

1. Identify all components and check for completeness, particularly before arranging fitting.
2. Establish desired position for rigid riser (1) and mark out wall, either by using the assembly as a template or by measuring the product.
3. The lower fixing / 1/2" male inlet tail (2) should be supported and fed by rigid pipe work through the recommended 1/2" female BSP connection (not supplied). Use a thread-sealing compound where necessary.
4. The upper wall bracket support (3) should be fixed to wall using the wall plug and screw (4) supplied.
5. The riser can then be offered into position and secured by the grub screws (5 & 6).

6. Attach rose and swivel (7) to the riser arm using the washer supplied. Connect handset to the diverter outlet using the hose and small sealing washers supplied. The conical end of the hose is used to park the handset in the sliding bracket (8), the height of which can be adjusted by loosening the small lever.

**NOTE: - Turn on water supplies to check both correct system function and for leaking from joints/ connections.**

7. To divert flow to the handset lift up the diverter. The diverter can be locked, by turning when lifted, otherwise it will self-cancel and revert back to the rose once water flow has ceased.
8. See over the page for aftercare instructions.



## MAINTENANCE

The rose and handset both feature rub clean faceplates for the easy removal of scale build up.

### Please Note: -

In the unlikely event you find a part missing please contact our Customer Service Help line on 01827 311345 for immediate dispatch of part.