

# BRISTAN

## Java Basin Mixer Range

### Fitting Instructions & Contents List



**Please keep these instructions for future reference and request of replacement parts**

# BRISTAN

| <b>Contents</b>           | <b>Page</b> |
|---------------------------|-------------|
| 1. Introduction           | 03          |
| 2. Safety Note            | 03          |
| 3. Specification          | 03          |
| 4. Installation           | 04 - 05     |
| 5. Cleaning & Maintenance | 06          |
| 6. Bristan Guarantee      | 07          |

## 1. Introduction

Thank you for choosing Bristan, the UK's leading taps and showers expert. We have designed this product with your enjoyment in mind. To ensure that it works to its full potential, it needs to be fitted correctly. These fitting instructions have been created to give you all of the information you need and, if you need any further help, please do not hesitate to give us a call on 0844 701 6273.

## 2. Safety Note

Please read these instruction thoroughly and retain for future use.

All products manufactured and supplied by Bristan are safe provided they are installed correctly, used correctly and receive regular maintenance in accordance with these instructions.

These fittings need to be installed in accordance with and meet the requirements of the Water Supply (Water Fittings) Regulations 1999 and Scottish Byelaws 2004.



Before starting any installation please consider the following:

Prior to drilling into walls, check that there are no hidden electrical wires, cables or water supply pipes. This can be checked with the aid of an electronic detector.

If power tools are used do not forget to:

- Wear eye protection
- Unplug equipment after use

## 3. Specification

| Operating pressure range (bar)    | Min. | Max. |
|-----------------------------------|------|------|
| Basin Mixer - J BAS C & J BASNW C | 0.2  | 8.0  |
| Eco Click Basin Mixer - J EBAS C  | 0.2  | 8.0  |
| Mini Basin Mixer - J SMBAS C      | 0.2  | 8.0  |
| Miniature Basin Mixer - J MBAS C  | 0.3  | 8.0  |

Maximum static pressure - 10.0 bar

NOTE:- Nominally equal (balanced) inlet supply pressures are recommended for optimum performance.

Designed to comply with BS EN 200 for single taps / combination taps for water systems of type 1 and 2 general technical specifications and to be used within systems designed to BS 6700.

BS 6700 recommends the temperature of stored water should never exceed 65°C. A stored water temperature of 60°C is considered sufficient to meet all nominal requirements and will minimise the build up of lime scale in hard water areas.

## 4. Installation – Basin Mixer

These taps are suitable for use at all supply pressures, however for optimum performance use both hot and cold water supplies which should be reasonably balanced.

Operating pressures:                   Min 0.2 bar, Max 8.0 bar  
  Min 0.3 bar, Max 8.0 bar (J MBAS C)  
Maximum static pressure:           10.0 Bar

If the fitting is installed at low pressure (tank fed), then the minimum distance from the underside of the nozzle to the cold water tank should be at least 2 metres\* to ensure adequate performance.

This mixer should be installed in compliance with Water Regulations.

For further details please contact your local Water Authority.

\*J MBAS C will require a minimum distance of 3 metres to ensure adequate performance.

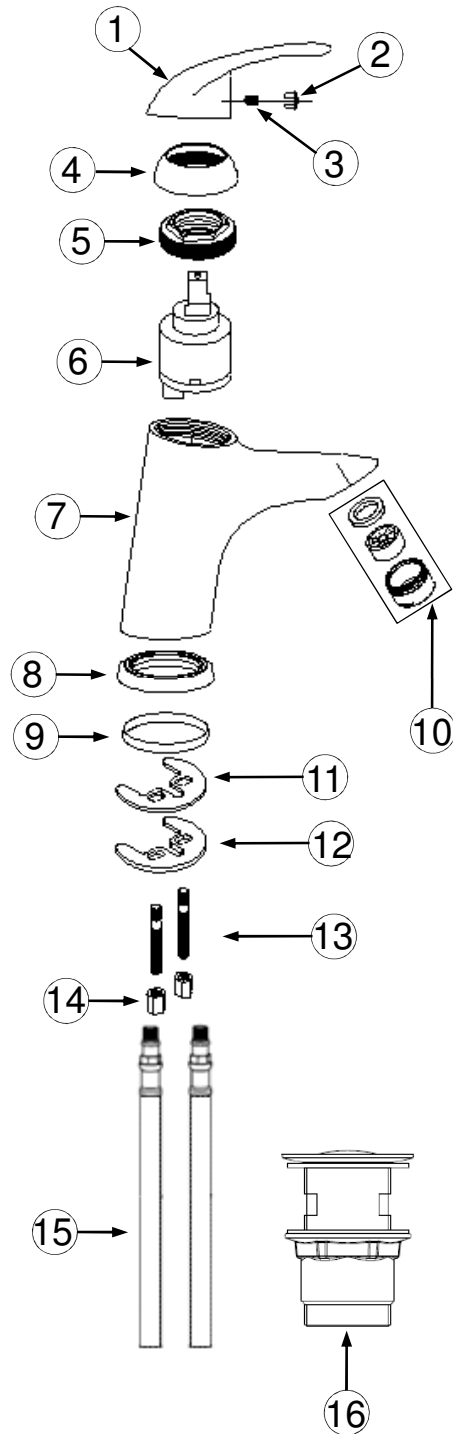
1. Identify all components are present, prior to starting installation.
2. Fit the mixer body to the basin using the 'C' plate fixing kit. The plinth (8) and washer (9) go between the fitting and the basin and the 'C' shaped rubber (11) and metal washers (12) on the underside of the basin. Secure into position using threaded rods (13) and nuts (14).
3. Fit the inlet connection pipes (15) **by hand only (DO NOT OVERTIGHTEN)** to the fitting and connect the hot and cold supplies.
4. If applicable fit the waste (16) using washers below and above the basin (supplied). It is recommended that a silicone sealant be applied to both sealing faces of the washers.
5. Fully open the mixer in the mid position, letting it run for a few minutes allowing time to check all joints and connections for leaks.
6. See page 6 for aftercare instructions.



NOTE: J EBAS C has an innovative water saving feature that offers a subtle resistance as it reaches approximately half of its full flow capability. For increased flow, this feature can be overridden. At full flow the eco click cartridge uses 32% less water than a standard cartridge and when in eco click mode the reduction increases to 72%.

## 4. Installation cont.

| Parts contents list          |     |
|------------------------------|-----|
| 1. Handle                    | x 1 |
| 2. Indice Cap                | x 1 |
| 3. Grub Screw                | x 1 |
| 4. Shroud                    | x 1 |
| 5. Retaining Nut             | x 1 |
| 6. Cartridge                 | x 1 |
| 7. Mixer Body                | x 1 |
| 8. Plinth                    | x 1 |
| 9. Anti Splash               | x 1 |
| 10. Washer                   | x 1 |
| 11. 'C' Shaped Rubber Washer | x 1 |
| 12. 'C' Shaped Metal Washer  | x 1 |
| 13. Threaded Rods            | x 2 |
| 14. Fixing Nuts              | x 2 |
| 15. Inlet Connection Pipes*  | x 2 |
| 16. Clicker Waste**          | x 1 |



- Flexible inlet connection pipes supplied with J BAS C & J BASNW C  
Copper inlet connection pipes supplied with all other mixers

\*\* Clicker waste not included with J BASNW C

## 5. Cleaning & Maintenance

Your fitting has a high quality finish and should be treated with care to preserve the visible surfaces.

All finishes will wear if not cleaned correctly. The only safe way to clean your product is to wipe with a soft damp cloth. Stains can be removed using washing up liquid. All bathroom cleaning product (powders and liquids) will damage the surface of your fitting, even the non-scratch cleaners.

NOTE:- Never use abrasive detergents or disinfectants or those containing alcohol, hydrochloric or phosphoric acid.

We advise that your fitting is regularly serviced, particularly in hard water areas.

### Maintenance

If the fitting begins to drip:

1. Turn off both water supplies to the tap / mixer.
2. Remove the indices cap, loosen grub screw with a hexagon key and pull off handle, unscrew shroud and retaining nut.
3. Remove Cartridge.
4. Clean or replace cartridge, clean and grease seal and refit.  
Note: There are locating pins on the bottom of the cartridge that fit in holes inside the tap, to ensure it is fitted the correct way round.
5. Replace cartridge and all other components and turn on the water supply.
6. Contact our helpline should the problem persist.

Please Note: In the unlikely event that you find a part missing please contact our Customer Service Helpline on 0844 701 6273 or email [enquire@bristan.com](mailto:enquire@bristan.com) for immediate dispatch of part.

**Bristan recommend E-Cloth for cleaning all of our bathroom & kitchen products. Using just water, E-cloth gives a smear free, deep clean by breaking up and holding dirt, which normal cloths leave behind. Order through your Bristan stockist.**

**(ORDER CODE: E-CLOTH)**





**Guarantee**

## 6. Bristan Guarantee

Bristan offers solid guarantees to provide you with complete peace of mind.

### Taps and Mixers

5 year parts and 1 year labour\*. Gold, painted and special finishes 3 years parts only.

All subject to proof of purchase.

### Mixer Shower Valves

5 year parts. 5 year labour\* (subject to registration), or 1 year with proof of purchase.

Gold, painted and special finishes 3 years parts only.

### Pumps and Power Showers

2 year parts. 1 year labour\* (subject to registration).

### Electric Showers/Instantaneous Water Heaters

2 year parts. 1 year labour\* (subject to registration).

### Accessories

5 year parts only. Includes bathrooms accessories, shower accessories (e.g. hoses, handsets and poles), wastes, WC levers and light pulls. Gold, painted and special finishes 3 years parts only.

### Sanitaryware

5 year parts only. Subject to proof of purchase.

### Shower Enclosures and Shower Trays

10 year parts (subject to registration), or 2 years with proof of purchase. 1 year labour\* (subject to registration), or 1 year with proof of purchase.

### Heated Towel Rails

5 year parts only. Gold, painted and special finishes 3 years parts only. All subject to proof of purchase.

\*Labour provided by an approved Bristan engineer. Guarantee only applies to products with a manufacturing fault. A deferred payment will be necessary in order to secure any visits by our engineers which will be charged if the problem is found **not** to be a manufacturing fault. If the fault is found to be down to a manufacturing error, the payment will be released and not charged.

This guarantee applies to products purchased within the United Kingdom or Republic of Ireland, but does not apply to products used commercially.

The guarantee is only available to original purchasers who have proof of purchase.

The installation must allow ready access to all products for the purpose of inspection, maintenance or replacement.

Any part found to be defective during the above guarantee period will be replaced without charge, providing that the product has been installed in accordance with the instructions, used as intended, and regularly serviced.

Servicing should be carried out at regular intervals of no more than 12 months and more frequently in hard water areas (heavy lime scale) areas.

In the unlikely event that any problems are encountered with the product's performance on installation, you must obtain guidance/authorisation from our Customer Service Department, and be able to supply proof and date of purchase, before any remedial action is taken.

The guarantee excludes general wear and tear and damage caused by accident, misuse or neglect, and does not cover the following:

- Components that are subject to general wear and tear such as filters, seals, 'O' rings and washers etc.
- Damage caused by faulty installation
- Damage caused by lime scale or any waterborne debris
- Damage caused by inappropriate cleaning products (see user instructions)
- Damage caused by the use of non-Bristan parts
- The product being used for a purpose other than intended by the manufacturer.

In the interests of continuous product improvement Bristan reserves the right to alter specification as necessary.

Please visit [www.bristan.com/sparesfinder](http://www.bristan.com/sparesfinder) in order to find spare parts for this product.

# BRISTAN

This booklet covers all product codes

J BAS C

J BASNW C

J EBAS C

J SMBAS C

J MBAS C

**Helpline**

**0844 701 6273**

Bristan Group Limited

Birch Coppice Business Park, Dordon, Tamworth, Staffordshire B78 1SG

A Masco Company

Website: [www.bristan.com](http://www.bristan.com)

Telephone: 0844 7016 274      Facsimile: 0844 701 6275

Email: [enquire@bristan.com](mailto:enquire@bristan.com)

FI (JAVABAS) – REV. D1