

## Trade Counter Catalogue



# Welcome to our new look Trade Counter Catalogue



Arctic Products Ltd is part of a group of companies who specialise in Industrial and Automotive consumable products.

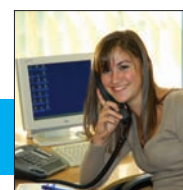
For over 26 years Arctic Products have partnered with industrial innovators to provide solutions to the Gas, Plumbing and Heating industries and provide a fully integrated range of quality products, that offer cost saving benefits to the professional user.

The manufacturing and distribution facility at the Corby site responds rapidly to the needs of our customers and will dispatch products to suit all logistical requests, and the recent introduction of E.D.I underlines Arctic's commitment to fully supporting the requirements of our distributors, quickly and efficiently.

We are a UK company who manufacture to ISO 9001:2000 and have a rigid environmental policy. Many of our products carry the GS mark, audited by RWTUV, which is a globally recognised standard of quality and fit-for-purpose.

This is supported with expert help and advice. Also available is our informative and easy to navigate website.

Nigel Stokes  
Managing Director



**Sales Hotline: 01536 264000**

**Fax Orders: 01536 264900**

**Email: [customerservice@arctic-products.co.uk](mailto:customerservice@arctic-products.co.uk)**

**Technical Information & Advice: 01536 264000**

**Arctic**  
Products Ltd

# Contents

## Polar

Professional	1
Commercial	1-2
Industrial	2
Polar Spares	3-4



## Arctic Electric

Electric Domestic	5
Electric Commercial	5
Electric Industrial	6



## Arctic Spray

Spray 2	7
Spray Trade	8
Spray Accessories	7-8



## PH Smoke

Smoke Pellets & Matches	9-11
Aerosols & Leak Detectors	12
Other Smoke Products	13
Tapes & Grease	14-15



## Home Safety

CO Alarms & Testers	16-17
Carbon Monoxide Facts	17



## Tools & Equipment

Gauges, Gloves, Wipes & Rope	18-21
Pads & Labels	21-23



## New Products

Earth Crimp Connectors	24
Split Klick	25
Pipemaster	26
SO-10 Suspended Ceiling in a Can	26





# Polar® Pipe freezing kits

**Polar® Pipe freezing products offer power, convenience and portability.**

Used by water authorities, British Gas and professional plumbing and heating engineers for over 20 years, the Polar® range is the most comprehensive range available. All the installer needs, presented in its distinctive and virtually indestructible blue case, Polar® is the most rapid freezing process available from an aerosol.



## Polar® Professional

8 - 22mm O/D



Description	Order Code
<b>Polar Professional</b>	<b>PSPRO</b>

This is the original and highly specified entry-level product in The Polar® Range. This comprehensive kit contains the same high quality components used in the larger industrial ranges.

### The Professional Kit contains:

- A pair of 8 - 15mm freezing jackets
- A pair of 15 - 22mm freezing jackets
- Brass regulator valve
- A pair of hoses (to connect the freezing jackets to the regulator valve)
- Weighing scale (for dosing freezer spray)
- T-connector (for double freezes)
- Canister of Polar Spray pipe freezing gas
- Comprehensive yet simple instructions

## Polar® Commercial

8 - 35mm O/D



Description	Order Code
<b>Polar Commercial</b>	<b>PSCOM</b>

The commercial kit offers the installer the next range of pipe work dimensions.

### The Commercial Kit contains:

- A pair of 8 - 15mm freezing jackets
- A pair of 15 - 22mm freezing jackets
- A pair of 28-35mm freezing jackets
- Brass regulator valve
- A pair of hoses (to connect the freezing jackets to the regulator valve)
- Weighing scale (for dosing freezer spray)
- T-connector (for double freezes)
- Canister of Polar Spray pipe freezing gas
- Comprehensive yet simple instructions

## 8 - 35mm O/D

## Polar® Commercial Plus

Description	Order Code
<b>Polar Commercial Plus</b>	<b>PSCOM+</b>

This kit is an enhancement to the standard Commercial Kit. The Polar Commercial Plus kit contains all of the components as in the Commercial Kit, with the addition of an extra canister of freezing spray.

The Polar Commercial kits are ideally suited to the professional plumber who is predominantly working on domestic pipe-work and also light commercial plumbing such as shops, restaurants and hospital pipe-work.

### The Commercial Plus Kit contains:

- A pair of 8 - 15mm freezing jackets
- A pair of 15 - 22mm freezing jackets
- A pair of 28 - 35mm freezing jackets
- Brass regulator valve
- A pair of hoses (to connect the freezing jackets to the regulator valve)
- Weighing scale (for dosing freezer spray)
- T-connector (for double freezes)
- 2 Canisters of Polar Spray pipe freezing gas
- Comprehensive yet simple instructions



## 8 - 61mm O/D

## Polar® Industrial

Description	Order Code
<b>Polar Industrial</b>	<b>PSIND</b>

This is the largest available pipe freezing kit in the Polar range. The Polar Industrial kit contains the complete range of Polar components offering total flexibility. Covering all the tasks asked of smaller kits with the ability to freeze pipe-work up to 61mm Ø

The Polar Industrial kit is the preferred kit for the professional plumber who is involved in all aspects of plumbing, including domestic, light commercial (shops, restaurants etc.) and also industrial (factories, manufacturing plants, power stations etc.)

### The Industrial Kit contains:

- A pair of 8 - 15mm freezing jackets
- A pair of 15 - 22mm freezing jackets
- A pair of 28 - 35mm freezing jackets
- A pair of 35 - 42mm freezing jackets
- A pair of 42 - 61mm freezing jackets
- Brass regulator valve
- A pair of hoses (to connect the freezing jackets to the regulator valve)
- Weighing scale (for dosing freezer spray)
- T-connector (for double freezes)
- 2 Canisters of Polar Spray pipe freezing gas
- Comprehensive yet simple instructions







## Polar® Canisters

Description	Order Code
Polar Canisters	<b>PG01</b>

Polar® Canisters are designed for use with all polar pipe-freezing systems; readily available from all leading plumbing and heating merchants.

These disposable canisters contain 700g, which is sufficient for 7 individual freezes on 15mm copper pipe, (see page 29 for full technical information) and ice plugs can be formed in as little as 90 seconds.



## Polar® Porter 4

Description	Order Code
Polar Polar Porter 4	<b>PP4</b>

The porter4 allows four canisters of polar pipe freezing spray to be stored in transit in a safe, protective case, ensuring you are always prepared for unexpected freeze downs both commercial and industrial.



## Polar® Dosing Scale

Description	Order Code
Dosing Scale	<b>SCALE</b>

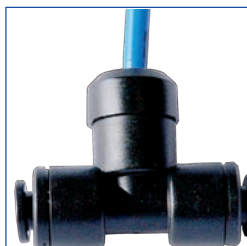
Replacement Polar scales that are initially supplied with every Polar pipe freezing kit. These are calibrated specially to weigh off Polar® Spray.



## Polar® Valve

Description	Order Code
Polar Valve	<b>VPOL</b>

Replacement valve for use with all Polar Pipe Freezing Kits. They are manufactured from pure brass by Arctic Products.



## T-Piece

Description	Order Code
T-Piece	<b>ETC04</b>

Replacement double freeze equal T connector for use with all Polar® Pipe Freezing Kits.

## Polar® 1 Metre Nylon Tube

Description	Order Code
1M Nylon Tube	<b>NTB04</b>

Replacement 1m length of nylon tube for use with Polar® Pipe Freezing Kits.



## Freezing Jacket 0 (Yellow)

Description	Order Code
Freezing Jacket 0 Yellow	<b>MUFF0</b>

8 - 15mm Freezing jacket made in rip-stop nylon for use with all Polar® Pipe Freezing Kits.



## Freezing Jacket 1 (Green)

Description	Order Code
Freezing Jacket 1 Green	<b>MUFF1</b>

15 - 22mm Freezing jacket made in rip-stop nylon for use with all Polar® Pipe Freezing Kits.



## Freezing Jacket 2 (Red)

Description	Order Code
Freezing Jacket 2 Red	<b>MUFF2</b>

28 - 35mm Freezing jacket made in rip-stop nylon for use with all Polar® Pipe Freezing Kits.



## Freezing Jacket 3 (White)

Description	Order Code
Freezing Jacket 3 White	<b>MUFF3</b>

35 - 42mm Freezing jacket made in rip-stop nylon for use with all Polar® Pipe Freezing Kits.



## Freezing Jacket 4 (Black)

Description	Order Code
Freezing Jacket 4 Black	<b>MUFF4</b>

42 - 61mm Freezing jacket made in rip-stop nylon for use with all Polar® Pipe Freezing Kits.



# Arctic Electric freezing kits

## Arctic Electric pipe freezing offers reliability, convenience and portability

Used within the Plumbing and Heating industry for over 20 years, the Arctic Electric freezing kits add a total solution to the installer and offer a long-term freeze on the most complex of jobs. Fast becoming an essential part of the installers specialised tools kit, they not only look professional but also save time and money on most installations.

### Electric Domestic



Description	Order Code
Electric Domestic	AE28/2

Kit Contains:

- 2 x 15mm reducers
- 2 x 22mm reducers
- Pair of cotton gloves
- Comprehensive yet simple instructions

Ice plug formation varies between four minutes for 15mm pipes to twelve minutes for 22mm pipe.

To freeze 8/10/15/22/28mm pipes.  
240 Volt (280w)

### Electric Commercial



Description	Order Code
Electric Commercial 110V 350 Watt	ARCEL/110
Electric Commercial 240V 350 Watt	ARCEL/220

Kit Contains:

- 2 x 28mm reducers
- 2 x 42mm enlargers
- Pair of cotton gloves
- Comprehensive yet simple instructions

Ice plug formation varies between four minutes for 15mm pipes to twelve minutes for 22mm pipe.

To freeze 8/10/15/22/28/35/42mm pipes.  
110 /240 Volt (350w)



## Electric Industrial



Description	Order Code
Electric Industrial 110V 600 Watt	<b>AE61/1</b>
Electric Industrial 240V 600 Watt	<b>AE61/2</b>

Kit Contains:

- 2 x 54mm reducers
- 2 x 61mm reducers
- Pair of cotton gloves
- Comprehensive yet simple instructions

Ice plug formation varies between four minutes for 15mm pipes to twelve minutes for 22mm pipe.

To freeze 8/10/22/28/35/42/49/54/61mm pipes  
110/240 Volt (350w)

# Arctic Spray2<sup>®</sup> pipe freezing

The Arctic Spray Range has been used by the trade for over 30 years and recently has become very popular within the D.I.Y. Market. The kit offers the convenience of being able to isolate sections of pipe work as required. Widely used in the installation of new home appliances that need a direct water feed, valve replacements and the changing of individual radiators. Arctic Spray offers total convenience for minimal installation costs.



## Arctic Spray 2 Freezer Kit

Description	Order Code
Arctic Spray 2	<b>OFASK01</b>

- 1 Large can of Arctic Spray2
- 2 Freezer jackets
- Suitable for 2 x 8 - 15mm freezes or 1 x 22 or 28mm freeze



## Arctic Spray 2 Starter Kit

Description	Order Code
Arctic Spray 2	<b>OFASS01</b>

- 1 Regular can of Arctic Spray2
- 1 Freezer jacket
- Suitable for 1 x 8mm - 15mm freeze



## Arctic Spray 2 Large Canister

Description	Order Code
Large Canister	<b>OFASJ01</b>

Fast acting within 5 minutes, lasts for up to 45 minutes (should be used with ASM01 Arctic Freezing Jacket)

- Suitable for 2 x 8 - 15mm freezes or 1 x 22 or 28mm freeze



## Arctic Spray 2 Regular Canister

Description	Order Code
Regular Canister	<b>OFASR01</b>

Fast acting within 5 minutes, lasts for up to 45 minutes (should be used with ASM01 Arctic Freezing Jacket)

- Suitable for 1 x 8mm - 15mm freeze



## Arctic Spray Freezing Jacket

Description	Order Code
Freezing Jacket	<b>ASM01</b>

8 - 22mm Freezing jacket for use with Arctic Spray Trade and Arctic Spray2.

## Arctic Spray Trade Kit

Description	Order Code
Arctic Trade Kit	<b>ASK01</b>

- 1 Jumbo can of Arctic Spray Trade
- 2 Freezer jackets
- Suitable for 2 x 8 - 15mm freezes or 1 x 22 or 28mm freeze



## Arctic Spray Trade Starter Kit

Description	Order Code
Arctic Trade Kit	<b>ASS01</b>

- 1 Regular can of Arctic Spray Trade
- 1 Freezer jacket
- Suitable for 1 x 8mm - 15mm freeze



## Arctic Spray Trade Jumbo Can

Description	Order Code
Jumbo Can	<b>ASJ01</b>

Fast acting within 5 minutes, lasts for up to 35 minutes (should be used with ASM01 Arctic Freezing Jacket)

- Suitable for 2 x 8 - 15mm freezes or 1 x 22 or 28mm freeze



## Arctic Spray Trade Regular Can

Description	Order Code
Regular Can	<b>ASR01</b>

Fast acting within 5 minutes, lasts for up to 35 minutes (should be used with ASM01 Arctic Freezing Jacket)

- Suitable for 1 x 8mm - 15mm freeze



## Arctic Spray Freezing Jacket

Description	Order Code
Freezing Jacket	<b>ASM01</b>

8 - 22mm Freezing jacket for use with Arctic Spray Trade and Arctic Spray2.





**ph Smoke Pellets & Matches** have been manufactured here in the UK since the late 60s. Today, more than 30 years on, they continue to be produced to a strict formulation that meets the ISO9001-2000 standards in our state of the art factory. This has provided us with a consistent product that meets the needs of a demanding industry. Our range of smoke pellets and matches span an assortment of sizes and specification volumes to provide todays professional with a product he can rely on.



## ph<sup>®</sup> Smoke 5gm Standard Smoke Pellet

Description	Order Code
5gm Standard	PHB006

- Tube of 6
- 30 second burn time
- 7<sup>3</sup> metres of smoke



## ph<sup>®</sup> Smoke 5gm Standard Smoke Pellet

Description	Order Code
5gm Standard	PH625

- Tub of 50
- 30 second burn time
- 7<sup>3</sup> metres of smoke



## ph<sup>®</sup> Smoke 5gm Standard Smoke Pellet

Description	Order Code
5gm Standard	PH007

- Tub of 100
- 30 second burn time
- 7<sup>3</sup> metres of smoke



## ph<sup>®</sup> Smoke 13gm Standard Smoke Pellet

Description	Order Code
13gm Standard	PH001

- Tube of 6
- 40 second burn time
- 18<sup>3</sup> metres of smoke



## ph<sup>®</sup> Smoke 13gm Standard Smoke Pellet

Description	Order Code
13gm Standard	PH008

- Tub of 50
- 40 second burn time
- 18<sup>3</sup> metres of smoke



## ph<sup>®</sup> Smoke 13gm Standard Smoke Pellet

Description	Order Code
13gm Standard	PH118

- Tub of 100
- 40 second burn time
- 18<sup>3</sup> metres of smoke

## ph<sup>®</sup> Smoke 5gm Encapsulated Smoke Pellet

Description	Order Code
5gm Encapsulated	PH030

- Tub of 10
- 30 second burn time
- 15<sup>3</sup> metres of smoke



## ph<sup>®</sup> Smoke 5gm Encapsulated Smoke Pellet

Description	Order Code
5gm Encapsulated	PH530

- Tub of 50
- 30 second burn time
- 15<sup>3</sup> metres of smoke



## ph<sup>®</sup> Smoke 5gm Encapsulated Smoke Pellet

Description	Order Code
5gm Encapsulated	PH130

- Tub of 100
- 30 second burn time
- 15<sup>3</sup> metres of smoke



## ph<sup>®</sup> Smoke 8gm Encapsulated Smoke Pellet

Description	Order Code
8gm Encapsulated	PH025

- Tub of 10
- 60 second burn time
- 24<sup>3</sup> metres of smoke



## ph<sup>®</sup> Smoke 8gm Encapsulated Smoke Pellet

Description	Order Code
8gm Encapsulated	PH525

- Tub of 50
- 60 second burn time
- 24<sup>3</sup> metres of smoke



## ph<sup>®</sup> Smoke 8gm Encapsulated Smoke Pellet

Description	Order Code
8gm Encapsulated	PH125

- Tub of 100
- 60 second burn time
- 24<sup>3</sup> metres of smoke



## ph<sup>®</sup> Smoke Classic Smoke Match

Description	Order Code
Classic Smoke Match	PH009

- Box of 12
- Display box of 72 boxes of 12 matches
- 20 second burn time
- 2<sup>3</sup> metres of smoke (Non Acidic)





## ph<sup>®</sup> Smoke Gas Match

Description	Order Code
Smoke Gas Match	PH00925

- Tub of 25
- 20 second burn time 1.4<sup>3</sup> metre smoke
- Moisture proof tubs with 2 strikers  
**(Non Acidic)**



## ph<sup>®</sup> Smoke Gas Match

Description	Order Code
Smoke Gas Match	PH00925

- Tub of 25
- 20 second burn time 1.4<sup>3</sup> metre smoke
- Moisture proof tubs with 2 strikers  
**(Non Acidic)**



## ph<sup>®</sup> Smoke Gas Match

Description	Order Code
Smoke Gas Match	PH00975

- Tub of 75
- 20 second burn time 1.4<sup>3</sup> metre smoke
- Moisture proof tubs with 2 strikers  
**(Non Acidic)**



## ph<sup>®</sup> Smoke Coloured 13gm Standard

Description	Order Code
13gm Standard	PH001C

- Tube of 6 **(Red)**
- 40 second burn time
- 18<sup>3</sup> metres of smoke



## ph<sup>®</sup> Smoke Coloured 8gm Encapsulated

Description	Order Code
13gm Encapsulated	PH025C

- Tub of 10 **(Red)**
- 60 second burn time
- 24<sup>3</sup> metres of smoke



**ph Leak Detector Sprays and Solvents.** These products have been specially formulated to form a liquid skin around the pipework which will lead to visible bubbles where even microscopic leaks could be present. The full PH range of leak detectors are non-flammable and non-corrosive therefore eliminating the possibility of pinhole corrosion whilst also providing safe usage. Tests have revealed that pinhole corrosion can occur where detergents such as washing up liquid or liquid soaps are used as an alternative.

## ph<sup>®</sup> Gas Leak Detector with Brush - 250ml

Description	Order Code
Leak Detector	PH026

Brush on gas leak fluid, non flammable, for detection of leaks in joints, connections etc.



## ph<sup>®</sup> Gas Leak Detector with Atomiser - 250ml

Description	Order Code
Leak Detector	PH026A

Gas leak fluid with atomiser, non flammable, for detection of leaks in joints, connections etc.



## ph<sup>®</sup> Gas Leak Detector Spray - 400ml

Description	Order Code
Leak Detector	PH020

Directional and wide angle spray for quick & convenient detection of potentially dangerous gas leaks



## ph<sup>®</sup> Gas Leak Detector non-flammable - 400ml

Description	Order Code
Leak Detector	PH0205

Using the latest technology, this product gives superior performance in the detection of potentially dangerous gas leaks. Can be used at any angle.



## ph<sup>®</sup> Professional Air Duster - 150ml

Description	Order Code
Air Duster	PH029

All ph Air Duster products are formulated to produce a high pressure stream of air which can be directed to remove cobwebs, dust and debris from hard to reach places such as burner jets and heat exchangers or simply to clean out access panels and appliance casings. Fully invertible, non flammable.



## ph<sup>®</sup> Professional Air Duster - 400ml

Description	Order Code
Air Duster	PH0294

All ph Air Duster products are formulated to produce a high pressure stream of air which can be directed to reach places such as burner jets and heat exchangers or simply to clean out access panels and appliance casings. Non flammable.





## ph<sup>®</sup> Smoke Cartridge - 80gm

Description	Order Code
Smoke Cartridge	PH018

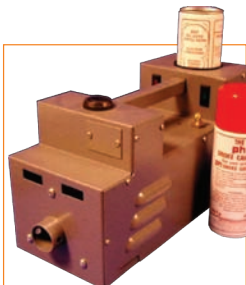
- Box of 6
- 90 second burn time
- 300<sup>3</sup> metres of smoke



## ph<sup>®</sup> Smoke Pellet & Match Holder

Description	Order Code
Smoke Pellet & Match Holder	PHSPHS

The safe way to use smoke pellets and matches.



## ph<sup>®</sup> Colt Phogger

Description	Order Code
Colt Phogger	PH012/013

Produces non-toxic, controllable smoke, 110V or 220V.



## ph<sup>®</sup> Smoke Cannister - 400ml

Description	Order Code
Smoke Cannister	PH014

- For use with PH Colt Phogger



## ph<sup>®</sup> Adaptor

Description	Order Code
PH Adaptor	PHCOLAPAPT

- For use with PH Colt Phogger

## ph<sup>®</sup> 1" Hose Kit

Description	Order Code
1" Hose Kit	PHCOLHOS

Includes 2m high temperature hose, adapter and clip.



## ph<sup>®</sup> PRS10 Tape

Description	Order Code
PRS10 Tape	PH024

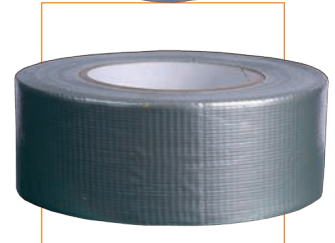
- 50mm x 25 Metres
- Gas Board approved -50°C to +110°C



## ph<sup>®</sup> Duct Tape

Description	Order Code
Duct Tape	PH050

- 50mm x 50 Metres
- Cloth back polyethylene multi-purpose tape



## ph<sup>®</sup> Gas Ident Tape

Description	Order Code
Gas Ident Tape	PH095A

- 38mm x 33 Metres
- Black on yellow



## ph<sup>®</sup> Gas On/Off Tape

Description	Order Code
Gas on/of Tape	PH095B

- 38mm x 33 Metres
- Black on yellow



## ph<sup>®</sup> Unsafe Appliance Tape

Description	Order Code
Unsafe Appliance Tape	PH095C

- 38mm x 33 Metres
- Black on yellow



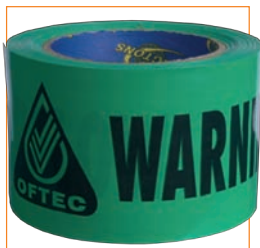
## ph<sup>®</sup> Do Not Use Tape

Description	Order Code
Do Not Use Tape	PH095D

- 38mm x 33 Metres
- Black on yellow







## ph<sup>®</sup> OFTEC Oil Warning Tape

Description	Order Code
OFTEC Tape	PH095E

- OFTEC oil line warning tape
- Black on green
- 75mm x 50mm



## ph<sup>®</sup> PTFE Water Tape

Description	Order Code
PTFE Water tape	PH097

- 12mm x 12mm
- WRAS Approved



## ph<sup>®</sup> PTFE Gas Tape

Description	Order Code
PTFE Gas tape	PH096

12mm x 5 metres. Can be used on threaded fittings carrying Natural gas, LPG etc.



## ph<sup>®</sup> Silicone Grease - 500g Tub

Description	Order Code
Silicone Grease	PH041

WRAS Approved. Water-repellent, non melting for use when in contact with potable water.



## ph<sup>®</sup> Gas Cock Grease - 50g Tube

Description	Order Code
Gas Cock Grease	PH045

- Resists Natural Gas & LPG 0°C - 160°C



## ph<sup>®</sup> Professional Silicone Spray - 400ml

Description	Order Code
Silicone Spray	PH040

WRAS Approved. Multi-purpose for use in antistick applications.

## Sleepsafe™ CO Detector Twin Pack

Description	Order Code
Sleepsafe Twin Pack	PH019AC

- Contains two colour change Carbon Monoxide Detectors



## Sleepsafe™ CO Detector Single Pack

Description	Order Code
Sleepsafe Single Pack	PH019HC

- Contains one colour change Carbon Monoxide Detector



## First Alert Battery CO Detector

Description	Order Code
Battery CO Detector	FCD3EC

- Test/silencer button, battery status indicator, 85dB alarm, 9V battery. UL app 5yr guarantee



## SF350 Battery Co Alarm

Description	Order Code
Battery CO Alarm	PHSFCO

- Continuous self-test function, batteries supplied and fitted. BSI app. Kitemarked, 5yr Guarantee, meets EN 50291 British Gas & Corgi approved.



## Single Smoke Alarm

Description	Order Code
Battery Smoke Alarm	PHSALAR

- 9 volt ionisation
- Compact design
- Low-battery warning
- Battery included
- Easy to install



## Twin Pack Smoke Alarm

Description	Order Code
Twin Pack Smoke Alarm	PHBSA/TP

- 9 volt ionisation
- Compact design
- Low-battery warning
- Battery included
- Easy to install



## Segment Timer 24hr

Description	Order Code
Segment Timer 24hr	PHST/1

- Easy to use
- Controls most 13 amp appliances up to 3kw
- Up to 48 On/Offs per day





## Sleepsafe™ Smoke Alarm Tester 140ml

Description	Order Code
Smoke Alarm Tester	PH043A

40 tests per can. Designed to test the sensor in smoke alarms.

## Detectagas - CO Detector Test Spray 520ml

Description	Order Code
Co Detector Test Spray	PHCO520

7 tests per can. Designed to test all CO alarms that meet BS 7860:1996 and ENS0291

## Carbon Monoxide The Facts

### What is carbon monoxide?

It is a commonly found, insidious and deadly poisonous gas, produced when fossil fuels such as gas, oil and solid fuel appliances are in operation. Greater amounts are produced if there is inadequate ventilation/oxygen for the appliance to use, or if the appliance is not working properly.

- It has no colour
- It has no smell
- It has no taste
- It is silent, invisible and deadly

If you breathe it in, it stops the blood taking up vital oxygen needed to keep you alive.

### When are you at risk?

You are at risk of carbon monoxide poisoning if:

- Equipment is not working properly – due to incomplete combustion
- There is not enough fresh air in the room
- A chimney or flue gets blocked up and carbon monoxide enters your living area

### What are the danger signs?

You won't always be able to see signs of carbon monoxide, only its' effect. If you spot any of these signs, turn off your appliance and call in an expert immediately:

#### Gas

Stains, or deposits of soot  
Yellow or orange flame

#### Solid fuel

Smell of fumes  
A fire that is sluggish, or tends to go out

**Remember to have your appliances serviced regularly.**

### What are the symptoms?

If you:

- Feel drowsy
- Have a slight headache
- Feel dizzy when you stand up
- Are nauseous/vomiting
- Have a pain in your chest you could be suffering from the early stages of **carbon monoxide poisoning**.

These are just some of the symptoms. You could also feel tired, have palpitations, or diarrhoea and stomach pains.

CO can cause death or permanent injury to oxygen rich tissue, such as the brain or heart. Continuous exposure to even relatively low levels of CO can lead to significant health effects.

CO poisoning is often confused with flu or cold symptoms or the effect of modern living.

**If you have any of these symptoms, turn off your appliance and seek medical advice.**

### Where are the potential CO sources in the home.

- Boiler
- Gas Water Heater
- Gas Oven/Hob – Cooker
- Fireplace (wood, coal or gas)
- Warming up a car on a cold morning in an enclosed garage
- Barbecue – charcoal/gas
- Gas Heater – Space Heater

Natural Gas, Propane, Methane, Butane, Wood, Oil, Petrol, Coal and Charcoal. Also known as "Fossil Fuels"



## Gas Service Engineer Kit

Description	Order Code
Service Kit	PHCORKITC

Handy carry case with products for the gas engineer.  
Kit Contains:  
10 x 5g Smoke Pellets - 10 x 8g Smoke Pellets  
12 x 13g Smoke Pellets - 49 Smoke Matches  
Air Duster - Leak Detector - Co Detectors  
Smoke Pellet & Match Holder and  
UK Gas Safety Pad.



## Dry Pressure Test Gauge

Description	Order Code
Pressure Test Gauge	PH103

Quick joint test kit for dry pressure testing of systems prior to commissioning. Complete with schrader valve & 15mm push-fit fitting.



## Tap Connection Water Gauge

Description	Order Code
Connection Water Gauge	PH106

Accurate water pressure testing. 0 - 11 Bar 3/4" BSP thread for fitting to taps.



## Latex Gloves - Box of 100

Description	Order Code
Latex Gloves	PH102

Waterproof and impervious to dirt, dust and grease.



## Latex Gloves - Bag of 10

Description	Order Code
Latex Gloves	PH122

Waterproof and impervious to dirt, dust and grease.



## Industrial Hand Wipes - Tub of 80

Description	Order Code
Hand Wipes	PHWIPES

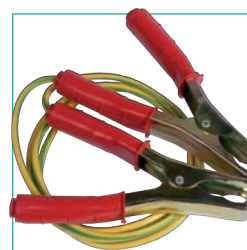
- Cleans paint, adhesive, silicone, PU foam & more.



## Continuity Bond

Description	Order Code
Continuity Bond	PH083

- Suitable for CORGI Installers Manual guidelines. For ensuring temporary continuity of earth.



# Tools & Accessories



## Wind-Up Head Torch

Description	Order Code
Wind-Up Head Torch	PHHTRCH

No batteries required - Built-in long life NI-MH batteries - Foldaway generator, handle to recharge batteries - 3 Super bright leds with 3 position switch – 1 led on, 3 leds on, 3 leds flashing - Fully adjustable head strap.



## Waterproof Wind-Up Torch

Description	Order Code
Waterproof Wind-Up Torch	PHWTRCH

Waterproof up to 10m - Foldaway generator handle to recharge batteries - Built-in long life NI-MH batteries - Carry strap - Swivel torch head to adjust direction of beam - 3 x Super bright leds - 3 way switch: 1 led on, 3 leds on, 3 leds flash.



## Mini Pipe Bender

Description	Order Code
Mini Pipe Bender	PH089

- Calibrated to 6mm , 8mm & 10mm

## 12" U Gauge

Description	Order Code
12" U Gauge	PH086

- Measures to 30 Bar.
- Made from tough plastic.
- Marked in millibars
- Scale adjusts to zero the water level



## 24" U Gauge

Description	Order Code
24" U Gauge	PH087

- Measures to 60 Bar.
- Made from tough plastic.
- Marked in millibars
- Scale adjusts to zero the water level



## U Gauge Tubing - 2m pack

Description	Order Code
Tubing	PH086B2

- Black Replacement Neoprene U Gauge Tubing



## U Gauge Tubing - 10m coil

Description	Order Code
Tubing	PH086B

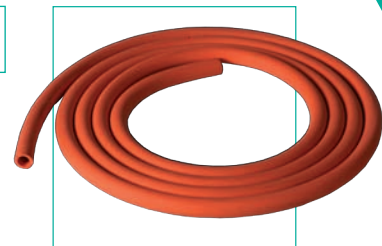
- Black Replacement Neoprene U Gauge Tubing



## U Gauge Tubing - 2m pack

Description	Order Code
Tubing	PH086R2

- Red Replacement Rubber U Gauge Tubing



## U Gauge Tubing - 10m coil

Description	Order Code
Tubing	PH086R

- Red Replacement Rubber U Gauge Tubing



## Manometer Fluid

Description	Order Code
Manometer Fluid	PHMANFLU

- Concentrated, with mould inhibitor & specific gravity = to zero



## TN1 Mini Infra-red Non-contact Thermometer

Description	Order Code
Thermometer	PH814050

- Measures Temperatures -22°C to +110°C
- Possibly the smallest infrared thermometer on the market today, instant and accurate.
- Lens ratio 1:1



## TN2 Mini Infra-red Thermometer

Description	Order Code
Thermometer	PH810169

- Thermometer with Laser Alignment
- Measures Temperatures -49°C to +120°C
- Lens ratio 3:1



## High Temperature Rope - 5m pack

Description	Order Code
High Temp Rope	PH002

- 6mm x 5 Metre Pack



## High Temperature Rope - 5m pack

Description	Order Code
High Temp Rope	PH003

- 10mm x 5 Metre Pack





# Tools & Accessories



## High Temp Rope Adhesive - 30ml bottle

Description	Order Code
Rope Adhesive	PH004

- 30 ml bottle. Nozzle application
- Resistant to 850°C



## High Temperature Rope - 30m roll

Description	Order Code
High Temp Rope	PH00225M

- 6mm x 30 Metre Roll



## High Temperature Rope - 30m roll

Description	Order Code
High Temp Rope	PH00325M

- 10mm x 30 Metre Roll



## High Temperature Rope - 30m roll

Description	Order Code
High Temp Rope	PH00625M

- 12mm x 30 Metre Roll



## UK Gas Safety Certificate Pad

Description	Order Code
Certificate Pad	PH091

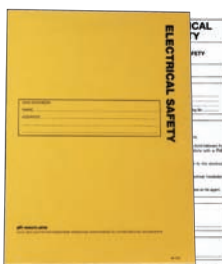
- 2 in 1 pad (replaces landlord & gas safety pad)
- 25 Sets in Triplicate



## Unsafe Installation Pad

Description	Order Code
Installation Pad	PH092

- 25 Sets in Duplicate



## Electrical Safety Pad

Description	Order Code
Elec Safety Pad	PH094

- 25 Sets in Duplicate

## Non Domestic Gas Pipework Pad

Description	Order Code
Pipework Pad	PH100

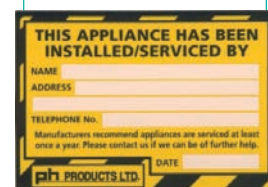
- 25 Sets in Duplicate



## Appliance has been Installed/Serviceed

Description	Order Code
Installation/Service labels	PH098A

- 8 Per Sheet



## Gas Safety Compartment Installation

Description	Order Code
Compartment Installation	PH098B

- 8 Per Sheet



## Gas Safety Airing Cupboard Installation

Description	Order Code
Air Cupboard Installation	PH098C

- 8 Per Sheet



## Gas Emergency Control

Description	Order Code
Gas Emergency Control	PH098D

- 8 Per Sheet



## Unsafe Appliance - Do Not Use

Description	Order Code
Do Not Use	PH098E

- 8 Per Sheet



## On/Off Valve Incoming Mains Water

Description	Order Code
Mains Water	PH104A

- 10 Per Pack
- Tie on tag
- Supplied with ties



# Tools & Accessories



## On/Off Valve Hot Water Distribution Service

Description	Order Code
Hot Water	PH104B

- 10 Per Pack
- Tie on tag
- Supplied with ties



## On/Off Valve Cold Water

Description	Order Code
Cold Water	PH104C

- 10 Per Pack
- Tie on tag
- Supplied with ties



## On/Off Valve Shower Cold

Description	Order Code
Shower Cold	PH104D

- 10 Per Pack
- Tie on tag
- Supplied with ties



## On/Off Valve Shower Hot

Description	Order Code
Shower Hot	PH104E

- 10 Per Pack
- Tie on tag
- Supplied with ties



## On/Off Gas Emergency Control Valve

Description	Order Code
Gas Emergency	PH104F

- 10 Per Pack
- Tie on tag
- Supplied with ties



## On/Off Valve Outside Tap - Close in Winter

Description	Order Code
Outside Tap	PH104G

- 10 Per Pack
- Tie on tag
- Supplied with ties



## Unsafe Appliance - Do Not Use

Description	Order Code
Unsafe Appliance	PH099A

- 8 Per Bag
- Tie on tag
- Supplied with ties



## Earth Crimp Connector

With thousands of new boiler installations and other H2O heating appliance fittings to be completed, the new ECC Earth Crimp Connectors offer drastically reduced installation times, thanks to a simple patented design, whilst also providing superior earth connections and effective cross bonding.

ECC Earth Crimp Connectors have a fully integrated crimping port that is attached to the coupler by high temperature solder so as to ensure that the crimping port stays fully integrated during installation. Suitable for single or cross bonding

ECC will enable engineers to satisfy the requirement of BS7671 (IEE Wiring Regulations) for earth equipotential bonding of central heating and other H2O pipe work.

- Quick & easy to fit
- Save 60% time
- Complete two jobs with one task
- Superior earth connection
- Simple, reliable, patented design
- BS7671 compliant

### Earth Crimp Connector Boiler Pack

Description	Order Code
Boiler pack	ECC001

- 3 x 15mm endfeed
- 3 x 22mm endfeed
- 6 x Safety tags

### Earth Crimp Connector Endfeed 15mm

Description	Order Code
15mm Pack	ECC002

- 6 x 15mm endfeed
- 6 x Safety tags

### Earth Crimp Connector Endfeed 22mm

Description	Order Code
22mm Pack	ECC003

- 6 x 22mm endfeed
- 6 x Safety tags

### Earth Crimp Connector Retro 15mm

Description	Order Code
15mm Pack	ECC004

- 6 x 15mm retro
- 6 x Safety tags

### Earth Crimp Connector Retro 22mm

Description	Order Code
22mm Pack	ECC005

- 6 x 22mm retro
- 6 x Safety tags



# New Products



- Saves time when installing monobloc tap
- Eliminates slip during installation
- Automatically centralizes the tap
- Stops any future movement of the tap

Split Klick locating washers are designed to help plumbers when installing taps onto baths and basins. Our Split Klick Top Hat Washers and Centralising Washers have, in the last year alone, sold one million pieces and are now distributed in various markets worldwide.

With a 'golden rule' that plumbers should always be able to save time when using our washers, we have recently added two more products to the Split Klick family. Responding to requests from within the trade, Split Klick Monobloc Washers have been developed to save time, ease frustration and offer a much stronger installation when fitting 'monobloc' taps onto sinks, baths and basins.



## Split Kick 1 - Top Hat Washer

Description	Order Code
Twin Pack	SK1/002
10 Pack	SK1/010
50 Pack	SK1/050
Bulk	SK1/B

- Replace old top hat washers without disconnecting pipework.
- Gives a much stronger and longer lasting fit.
- Easier and quicker to fit.
- Suitable for both 1/2" and 3/4" taps



## Split Kick 2 - Centralising Washer

Description	Order Code
Twin Pack	SK2/002
10 Pack	SK2/010
50 Pack	SK2/050
Bulk	SK2/B

- Centralises taps with no mess.
- Gives a much stronger and longer lasting fit.
- Easier and quicker to fit.
- Suitable for both 1/2" and 3/4" taps.



## Split Kick 3 - Monobloc Washer

Description	Order Code
Single Pack	SK3/001
5 Pack	SK3/005

- Made from tough, industrial 'Nylon 6', these washers last for years!
- Automatically centralises the tap.
- Stops future movement of the tap.
- Eliminates 'slip' during installation.
- Saves time when installing monobloc taps.



## Split Kick 4 - Monobloc Washer

Description	Order Code
Single Pack	SK4/001
5 Pack	SK4/005

- Made from tough, industrial 'Nylon 6', these washers last for years!
- Saves time when installing monobloc taps.
- Eliminates 'slip' during installation.
- Automatically centralises the tap.
- Stops future movement of the tap.

## Pipe Master - Soldering Tool

Description	Order Code
Pipemaster	<b>PM240</b>
8mm Spare Heads	<b>PMST/08</b>
15mm Spare Heads	<b>PMST/15</b>
22mm Spare Heads	<b>PMST/22</b>
28mm Spare Heads	<b>PMST/28</b>

The Pipemaster Professional is designed to provide a clean and safe solution for the professional plumbing contractor. A powerful tool with sophisticated temperature control, the Professional has a short warm up time and powerful heating elements.

- Use in confined spaces
- Wherever access is restricted or a flame may be a hazard
- Prevents damage to walls and décor
- Clean and easy to use
- Solders pipe joints in seconds
- Use with standard or pre-soldered fittings
- Use with all standard pipe sizes
- High power heating elements
- Advanced electronic temperature control
- Replacement heads available for most pipe sizes



## SO - 10 - Suspended Ceiling Restorer

Description	Order Code
Ceiling in a can	<b>SO-10</b>

SO-10 offers an effective and economic alternative to costly and unnecessary ceiling tile replacement.

A simple and inexpensive method of restoring suspended ceilings is to specify **SO-10** Acoustic, which unlike standard paints and emulsions will not damage the sound absorption properties. The ceilings fire rating will remain intact and the non-bridging formulation prevents ceiling tiles from warping or sticking to the grid system.

Inadvisable acoustic environments are linked with a number of health problems, which can lead to reduced performance and staff absenteeism. In order to overcome these problems and also to boost a feeling of well being the application of SO-10 is recommended for all suspended ceilings.

- Will re-coat tiles and grid
- Tiles will not stick to track
- Quick drying with matt finish
- Perfect colour match for most new ceiling tiles
- Covers nicotine stains and finger marks
- Retains full fire & acoustic properties
- Cost Effective





# Pipe Freezing Best Practices

## Pipe Freezing Equipment

For many years, Pipe Freezing has been a simple method of carrying out repairs and maintenance on live water carrying pipes.

There are several methods used to freeze pipes, and the equipment required can vary in size, cost and capability, these variations are outlined below.

The Arctic® range of Pipe Freezing products is designed for Domestic and Commercial pipes of between 8mm and 88mm Outside Diameter (O/D).

## The equipment options for Pipe Freezing;

### Disposable Gas Freezers.

Disposable pipe freezers consist of an aerosol can of refrigerant spray and a plastic freezing jacket, and usually will only freeze pipes up to a maximum of 28mm O/D. Arctic Spray and Arctic Spray2 are both market leading brands of disposable Pipe Freezers.

### Reusable Gas Freezers.

Professional pipe freezer kits, such as the Arctic Polar® freezer kits, have reusable components such as freezing jackets, regulator valve and nylon hoses, together with a canister(s) of refrigerant gas. Reusable gas freezers generally freeze pipes up to 61mm, although 100mm O/D is achievable with certain kits.

### Electric Freezers.

Electric pipe freezers, like the Arctic Electric® range are capable of freezing pipes of sizes 8mm to 88mm O/D. These kits are expensive but once purchased there are no ongoing costs, as associated with Gas Pipe Freezers.

### Liquid Nitrogen.

Liquid Nitrogen pipe freezing is a specialist application and as such is carried out by specialist companies. Liquid Nitrogen requires specialist handling, transportation and storage, due to its extreme temperature of close to -200°C. Liquid Nitrogen is capable of freezing pipes up to 60 inches in diameter.

## Arctic Spray Trade and Arctic Spray2 - Overview

Arctic Spray Pipe Freezers are suitable for pipe sizes up to a maximum of 28mm outside diameter (O/D) This makes the Arctic Spray range perfect for nearly all domestic jobs. Arctic Spray can be used on all types of pipe, including Copper, Lead, Iron, Steel and Plastic.

## Arctic Spray Pipe Freezing - Best Practices

- Always ensure Boilers and Circulating Pumps are SWITCHED OFF - MOVING WATER WILL NOT FREEZE
- Only use Arctic Spray in a well ventilated area.
- Arctic Spray works best at ambient temperatures in the region of 20°C.
- With disposable pipe freezers such as Arctic Spray, it is preferable to select a freeze point where the freezing jacket can be applied horizontally. This enables a larger ice plug to form in the pipe, and will increase the length of time that the ice plug will last for.
- To apply the freezing jacket horizontally, use the cable ties provided to tie the jacket tightly approximately 15mm in from the end of the jacket. Fig. 1
- To apply the freezing jacket vertically, use only one cable tie, approximately 15mm from the bottom of the jacket. Fig. 3
- The Arctic Spray Freezing Jacket should never be cut down in size. By cutting down the freezing jacket, the volume of Arctic Spray that the jacket can hold will be affected and could stop the ice plug forming.
- Before commencing any work on a frozen pipe, ensure flow of water has ceased by opening a tap or valve.

# Pipe Freezing Best Practices

Stock Code	Description	Suitable for
OFASS01	Arctic Spray2 Starter Kit. Contains: 1 x Arctic Spray 2 Freezer Spray 240g 1 x Arctic Spray Freezing Jacket.	Single freeze on pipework 8 to 15mm
OFASK01	Arctic Spray2 Freezer Kit. Contains: 1 x Arctic Spray 2 Freezer Spray 500g 2 x Arctic Spray Freezing Jacket	Two freezes on pipework 8 to 15mm, or single freeze on 22mm or 28mm pipes
ASS01	Arctic Spray Trade Starter Kit. Contains: 1 x Arctic Spray Trade Freezer Spray 220ml 1 x Arctic Spray Freezing Jacket	Single freeze on pipework 8 to 15mm
ASK01	Arctic Spray Trade Freezer Kit. Contains: 1 x Arctic Spray Trade Freezer Spray 500ml 2 x Arctic Spray Freezing Jacket	Two freezes on pipework 8 to 15mm, or single freeze on 22mm or 28mm pipes
OFASR01	Arctic Spray2 Standard Can - 240g	These items are suitable for using in addition to the Arctic Spray range of Freezer Kits.
OFASJ01	Arctic Spray2 Large Can - 500g	
ASM01	Arctic Spray Freezing Jacket	
ASR01	Arctic Spray Trade Small Can - 220ml	
ASJ0 1	Arctic Spray Trade Jumbo Can - 500ml	

## Arctic Spray Trade and Arctic Spray2 - Application



Fig. 1. Shows an Arctic Spray Freezing Jacket being attached to a pipe horizontally. Note the hole in the freezing jacket, this is where the Arctic Spray will be injected into the jacket. On horizontal freezes, use only the cable ties provided. There is no need to tape up the ends of the jacket.

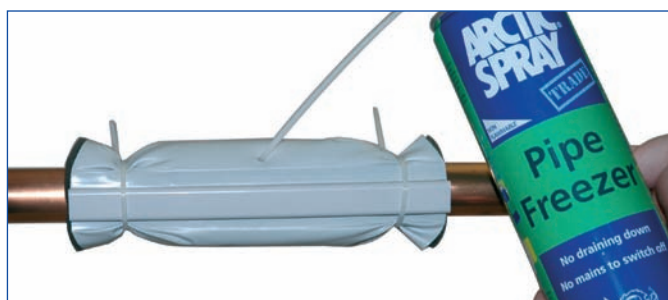


Fig. 2. Shows how to inject Arctic Spray Trade into a horizontal freeze point.

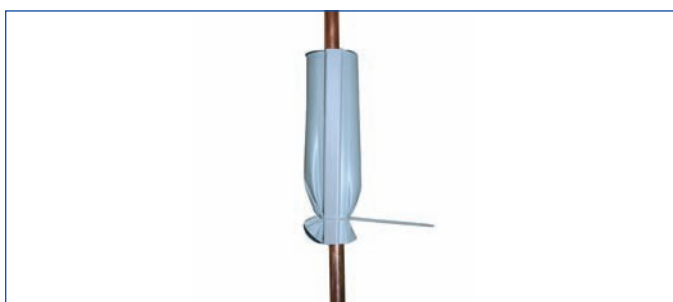


Fig. 3. Shows an Arctic Spray Freezing Jacket attached to a vertical pipe. Note that only one cable tie is used for vertical freezing. When freezing vertically, it is advisable to use some tape to seal the bottom of the jacket to the pipe, however this is not essential.



Fig. 4. Shows how to inject Arctic Spray2 into a vertical freeze point.

# Pipe Freezing Best Practices

## Polar Pipe Freezing - Overview

Polar Pipe Freezer Kits are suitable for pipe sizes up to a maximum of 61mm outside diameter (O/D). This makes the Polar System range perfect for all domestic jobs and many Commercial and Industrial applications.

All Polar Kits are 'double freeze' kits, meaning that two freezes can be done simultaneously.

## Polar Pipe Freezing - Best Practices

- Always ensure Boilers and Circulating Pumps are SWITCHED OFF - MOVING WATER WILL NOT FREEZE
- Only use Polar Spray in a well ventilated area.
- Polar Spray works best at ambient temperatures in the region of 20°C.
- When attaching Polar Freezing Jackets, try to trap the blue material of the jacket under the tie cords. This will reduce the chance of freezer spray leaking out of the jacket.
- When injecting Polar Spray into the freezing jacket, be watchful of any liquid freezer spray dripping out of the jacket. If any liquid drips from the jacket, reduce the flow of spray until the dripping stops. This reduces waste and improves efficiency.
- Always use AT LEAST the amount of Polar Spray stated in the freezing guide. For high ambient temperatures and pipe material other than copper, use at least 25% more Polar Spray.

## Polar Kit Contents

Brass Regulator Valve, Weighing Scale, 2 Lengths of Plastic Tubing, Equal T Connector for double freezing, **Laminated** Instructions, Polar Freezer Spray, and a selection of Freezing Jackets. In addition to the above contents the Polar Kits contain the following items;

Stock Code	Description	Suitable for
<b>PSPRO</b>	Polar Professional Freezer Kit. Contains: 1 x Polar Freezer Spray 700g 2 X 8-15mm Freezing Jacket 2 x 15-22 Freezing Jacket.	All pipework from 8-22mm O/D.
<b>PSCOM</b>	Polar Commercial Freezer Kit. Contains: 1 x Polar Freezer Spray 700g 2 x 8-15mm Freezing Jackets 2 x 15-22mm Freezing Jackets 2 x 28-35mm Freezing Jackets	All pipework from 8-35mm O/D.
<b>PSCOM+</b>	Polar Commercial+ Freezer Kit Contains: As PSCOM, but with 2 x Polar Freezer Spray.	All pipework from 8-35mm O/D.
<b>PSIND</b>	Polar Industrial Freezer Kit Contains: As PSCOM+, but with; 2 x 35-42mm Freezing Jackets 2 x 42-61 mm Freezing Jackets	All pipework from 8-61mm O/D.
<b>PG01</b>	Polar Freezer Spray 700g	Up to 7 freezes on 15mm copper

# Pipe Freezing Best Practices

## Polar Pipe Freezing - Application

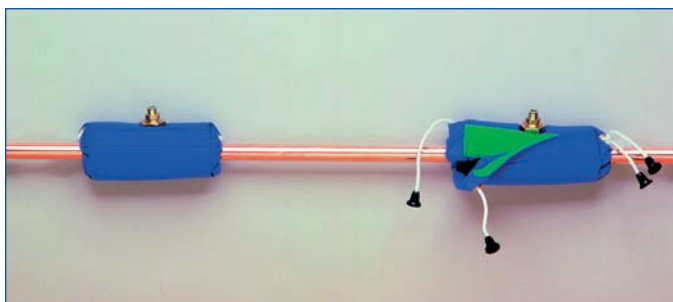


Fig. 1. Shows a Polar Freezing Jacket being attached to a pipe.

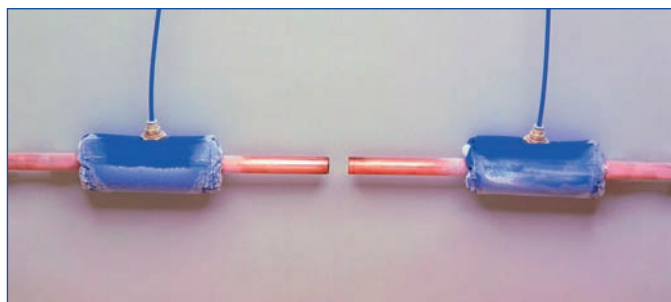


Fig. 2. Shows a section of pipe removed in order to insert a compression fit Equal -T Note the freezing jackets left in place whilst work is carried out.

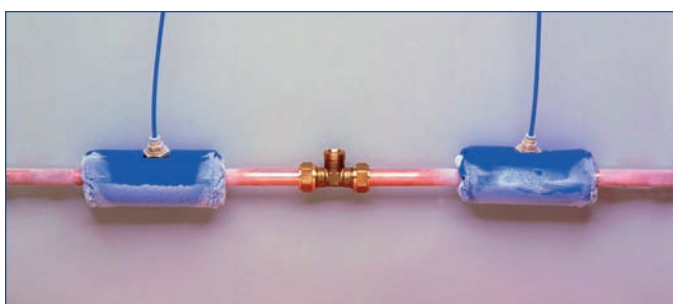


Fig. 3. Shows compression T piece being fitted.

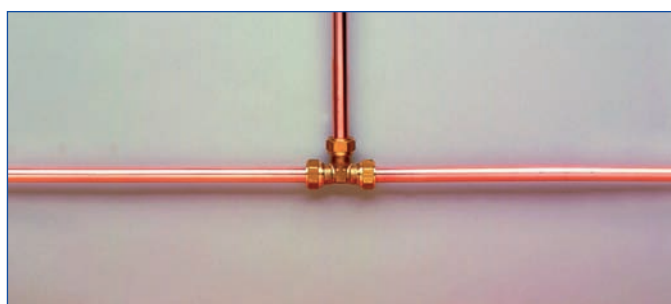


Fig. 4. Shows the completed work, and freezing jackets removed.



# Pipe Freezing Best Practices

## Arctic Electric - Overview

Stock Code	Description	Suitable for
AE28/2	Arctic Electric Pipe Freezer - Domestic	All pipework from 8-28mm O/D.
ARCEL/110	Arctic Electric Pipe Freezer - Commercial 110 volts	All pipework from 8-42mm O/D.
ARCEL/220	Arctic Electric Pipe Freezer - Commercial 220 Volts	All pipework from 8-42mm O/D.
AE61/1	Arctic Electric Pipe Freezer - Industrial 110 volts	All pipework from 8-61 mm O/D.
AE61/2	Arctic Electric Pipe Freezer - Industrial 220 Volts	All pipework from 8-61 mm O/D.
AE61/KIT	Adaptor Kit for AE61 Freezers.	Adaptors for 76-88mm O/D.

## Arctic Electric - Best Practices

- Always ensure Boilers and Circulating Pumps are SWITCHED OFF - MOVING WATER WILL NOT FREEZE
- Arctic Electric Pipe Freezers work best at ambient temperatures in the region of 20°C.
- Always allow the Pipe Freezing Machine to stand for a few minutes before each operation. This allows the oil to settle in the compressor and will prolong the life of the machine.
- The freezeheads of the Arctic Electric Pipe Freezers are machined to metric pipe diameters. Therefore on non metric pipes there will not be 100% thermal contact between the freezehead and the pipe. Any gap between the freezehead and the subject pipe will prevent the pipe freezer from forming an ice plug.
- Use wet tissue paper/ kitchen roll, silicone grease or water based lubricant (such as hand cream) to fill any gaps between the freezehead and pipe.

## Arctic Electric - Application



Fig. 1. Shows Arctic Electric ready to isolate the radiator in order to change the radiator valves.



Fig. 2. Shows the compact size of the freezehead. Note the block pipe going into the back of the freezehead. This block hose should always go into the top half of the freezehead for best performance.

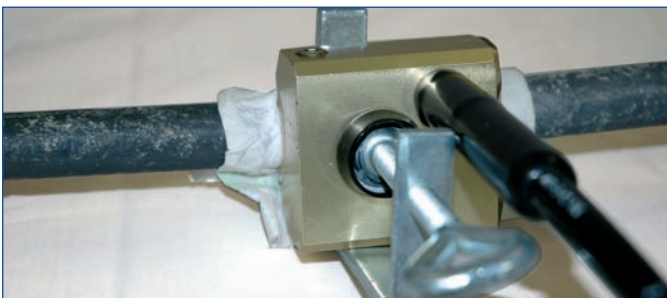


Fig. 3. Shows the use of wetted kitchen roll to fill the air gaps between the freezehead and the subject lead pipe



Fig. 4. Shows the Arctic Electric being used by Northumbrian Water in 1987.





Arctic Products Ltd, Baird Road, Corby, Northants NN17 5ZA

Tel: +44 (0)1536 264000 Fax: +44 (0)1536 264900 sales@arctic-products.co.uk