

Doc M

Purpose designed to comply with the latest building regulations relating to special needs, AKW's DOC M range offers quality and choice.

Benefits

- Wide choice of variants, to meet the needs of all users
- Ergonomically designed for maximum comfort
- Fully compliant to BS8300:2009 guidelines for a unisex accessible WC
- Options to fit all budgets and spaces
- Extras include a thermostatic mixer tap to prevent scalding
- Fully inclusive packs, ready to go

Features

- Standard pack available in white and blue
- Water saving flush valve standard on all packs
- Screw down cistern lid standard on all packs
- Soft closing toilet seat and lid standard on all packs
- Mirror and clothes hooks included in fully compliant packs

- | | | | |
|------------------------|--|--------------------------|----------------------------|
| 1 Cloak Hooks | 5 Close Coupled Dual Flush Toilet with Cistern | 8 Alarm Reset | 12 TVM3 Tap |
| 2 Mirror 400mm | 6 Ergonomic Toilet Seat with Lid | 9 Tissue Dispenser | 13 Finger Rinse Wash Basin |
| 3 Fluted Grab Rail | 7 Small Shelf | 10 Paper Towel Dispenser | 14 Hand Dryer |
| 4 Fold Up Support Rail | | 11 Soap Dispenser | 15 Large Shelf |

Wheelchair-accessible unisex toilets

Design considerations

It's essential that wheelchair users are able to approach, transfer to, and use the sanitary facilities provided within a building. This means a wheelchair-accessible unisex toilet must be made available. Considerations for this facility include:

The relationship of the WC to the finger rinse basin and other accessories.

The arrangement should allow the user to wash and dry their hands while still seated on the WC.

The space provided for manoeuvring.

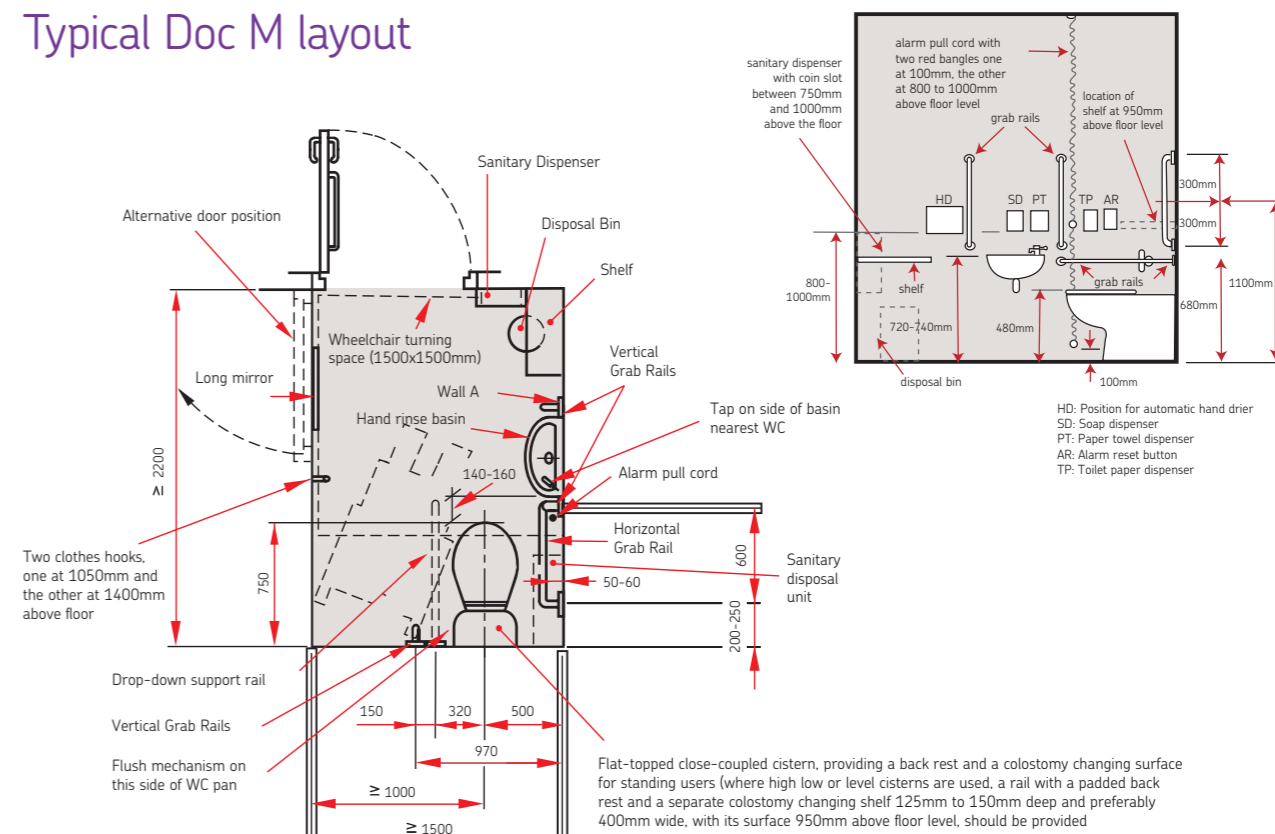
This should enable easy transfer from wheelchair to WC, whether the user is alone or has assistance.



Typical Doc M layout



Typical Doc M layout



Further information

Option 1 & 2

Fully compliant to BS8300:2009 guidelines for a unisex accessible WC.

2 tap hole wall mounted wash basin

This allows a mixer tap to be fitted left or right handed and without overflow for additional hygiene.

Thermostatic sequential mixer tap

TMV3 approved to prevent scalding, the thermostat is within the mixer (and not separate, as is the case with other suppliers). This reduces the risk of legionella bacteria forming between separate parts.

Easy operational flush handle

Allowing for flushing with elbow or hand, this also offers full and half flush operation for water saving. It comes in a non-reflective stain chrome finish and can be fitted left or right handed. Conforms to EN 997.

Raised height WC

Set at 460mm high (480mm with toilet seat), it's specially designed for wheel chair access. It comes with 4 fixing points.

Ergonomic toilet seat with lid

Metal hinges and lugs secure the pan for easier side transfer. In some Doc M options it's available in high visibility blue for users with impaired vision.

Cistern

Has a screw down lid for security and safety.

Grab rails

4 x 600mm long with concealed fixings (tested up to 190kg/ 33 stone weight). In some Doc M options, they're also available in high visibility blue for users with impaired vision.

Fold up grab rail

Tested to 190kg/ 3 stone weight. In some Doc M options, they're also available in high visibility blue for users with impaired vision.

Liquid soap dispenser

An extended blue lever provides high visibility colour contrast and is easy to operate with either elbow or closed fist.

Mirror

With toughened glass for extra safety and a blue contrasting border for visually impaired users.

Hand drier - 1.6kW

Has a heavy duty steel cover and a white powder coated finish.

Large paper towel dispenser

Uses standard size towels.

Toilet tissue dispenser

Takes standard tissue and comes with contrasting colours for visually impaired users.

Large white polypropylene shelf

530mm wide x 230mm deep with rounded edges and a hole for drainage. The shelves can be easily removed for cleaning.

Small white polypropylene shelf

215mm wide x 185mm deep with rounded edges for safety, and a hole for drainage. It can be easily removed for cleaning.

Alarm and pull cord

Mains fed and easy to install, it's manufactured to CE requirements 90dbA.

Clothes hooks

Coloured blue for visual contrast, they're easily removed for cleaning.

Swing bin

In grey plastic with contrasting blue swing top.

Heavy duty padded back

Helping aid side transfer, it's made from PU foam for easy cleaning. Available in grey or blue for visually impaired in some Doc M options.

In compliance with



Option 1

Fully compliant close coupled Doc M pack

Pack includes:

- 2 tap hole wall mounted wash basin
- TMV3 Thermostatic sequential mixer tap
- Easy operational flush handle
- Raised height WC
- Blue ergonomic toilet seat with lid - soft closing
- Close coupled cistern with screw down lid
- Blue grab rails
- Blue fold up grab rail
- Liquid soap dispenser
- Hand drier - 1.6kW
- Large paper towel dispenser
- Toilet tissue dispenser
- Large white polypropylene shelf
- Small white polypropylene shelf
- Alarm and pull cord
- Mirror with toughened glass
- 2 clothes hooks
- Swing bin
- Full flush 6 litres, half flush 4 litres

Product Code: **23200**



TMV3 Thermostatic sequential mixer tap



Fold up blue grab rail



Alarm & pull cord



Large paper towel dispenser



In compliance with



All items are available separately - see pages 196-207.

Option 2

Fully compliant low level Doc M pack

Pack includes:

- 2 tap hole wall mounted wash basin
- TMV3 Thermostatic sequential mixer tap
- Easy operational flush handle
- Raised height WC set at 460mm high
- Blue ergonomic toilet seat - soft closing
- Low level cistern with screw down lid
- Blue grab rails
- Blue fold up grab rail
- Liquid soap dispenser
- Padded back rest
- Hand drier - 1.6kW
- Large paper towel dispenser
- Toilet tissue dispenser
- Large white polypropylene shelf
- Small white polypropylene shelf
- Alarm and pull cord
- Mirror with toughened glass
- 2 clothes hooks
- Swing bin
- Full flush 6 litres, half flush 4 litres

Product Code: **23201**



Toilet tissue dispenser



Swing bin



Liquid soap dispenser



Hand drier



In compliance with



All items are available separately - see pages 196-207.

*All catalogue products guaranteed for life. Exclusions apply.



General: 01905 823298 | Orderline: 01905 823299 | Email: sales@akw-medicare.co.uk

Option 3

Close coupled standard Doc M pack



Pack includes:

- 2 tap hole wall mounted wash basin
- Monobloc spray mixer tap
- Easy operation flush handle for flushing
- Raised height WC
- White ergonomic toilet seat with lid
- Close coupled cistern with screw down lid
- White grab rails
- White fold up grab rail
- High visibility blue rails and toilet seat also available
- Full flush 6 litres, half flush 4 litres

Product Code: 23202 (White) / 23203 (Blue)



2 Tap hole finger rinse wash basin



White natural fluted grip grab rail



Blue toilet seat



Raised height WC



In compliance with



All items are available separately - see pages 196-207.

Option 4

Low level standard Doc M pack



Pack includes:

- 2 tap hole wall mounted wash basin
- Monobloc spray mixer tap
- Easy operational flush handle
- Raised height WC
- White ergonomic toilet seat
- Low level cistern with screw down lid
- Padded back rest
- White grab rails
- White fold up grab rail
- High visibility blue rails, toilet seat and back rest also available
- Full flush 6 litres, half flush 4 litres

Product Code: 23204 (White) / 23205 (Blue)



White fluted grab rail



Fold up white grab rail



Low level cistern



Padded back rest



In compliance with



All items are available separately - see pages 196-207.

*All catalogue products guaranteed for life. Exclusions apply.

General: 01905 823298 | Orderline: 01905 823299 | Email: sales@akw-medicare.co.uk