

Bi-Fold Door

Instruction Manual

CV



Consumer Guarantee

Please make sure the purchaser/end user completes and returns the Guarantee card which is enclosed with this product. Failure to validate the Guarantee will mean only the 1 Year Statutory Guarantee will apply.

IMPORTANT

- Please ensure the consumer guarantee card enclosed with this product is completed and returned; please ensure the end user retains this manual.
- Please read these instructions carefully prior to attempting installation.
- Unpack and handle the product with care to avoid damage to the product finish.
- Check for hidden electrical cables and water pipes prior to commencing any drilling work.
- Ensure the walls where the Enclosure is to be fitted are vertical. **Note:** *It is recommended that the walls are tiled after the Tray is fitted and grouted before fitting the Enclosure. This will provide maximum adjustment and will aid sealing.*
- No attempt should be made to rework toughened safety glass.
- At no stage should you tile over the lip of the Wall Profiles.
- Pictures used are for illustration purposes only, product designs may alter slightly as a result of continuing product development.

Component Check List: Supplied

Ref	Description	Quantities
A	Wall Profiles	2
B	Bi-Fold Door	1
	Fitting Pack	
C	2.5mm Drill Bit	1
D	Wall Plugs (for brick and block only)	6
E	40mm Screws	6
F	Coloured Caps and Bases	9
G	9mm Screws	6
H	Branding Badge (where applicable)	1

Equipment Checklist: Not Supplied

4.5mm Metal Drill Bit (if required)
Electric Drill
6mm Masonry Drill Bit
Silicone Sealant Gun
Bathroom Sealant Tube
Screwdriver
Spirit Level
Tape Measure
Pencil
Wall Plugs (Plasterboard)

Before Assembly and Installation of the Bi-Fold Door

- Check to see that you have the correct Enclosure for your Tray. This can be done by referring to the label on the side of the product packaging.
- Ensure all parts are in the packaging by checking them against the parts and quantities shown on the component check list above.
- Check the product for defects. Installation queries on damaged parts cannot be resolved once the installation has been completed.
- The Tray must be completely sealed along tiled walls, fitted level (check with a Spirit Level) and should have no leaks.

Notes: *It is recommended that the Wall Profiles are fitted directly onto tiles or a similar sealed surface. If walls or tray or a combination of both are out of level you will not achieve full adjustment of maximum width. We do not stipulate where the British Standard Safety Kite Mark should be positioned on the glass panels when being factory assembled.*



Figure A

① Ensure the Tray is completely level - check for any movement in the Tray by standing in it. Fill the Tray with water to check all plumbing for leaks.
Note: Please ensure that the Tray is installed as per Manufacturer's Instructions.



Figure B

② The Tray should be fully sealed along the tiled walls prior to installation with a Bathroom Sealant (not supplied). Prior to commencing installation of the Enclosure and once the sealant has set, spray the shower handset around all joints to check for leaks.



Figure C

③ If the Enclosure is to be installed into a three wall alcove, measure the aperture after tiling at the top, middle and bottom (**Figure C**). Ensure the smallest size of the three measurements is used in **Stage 4**.



Figure D

④ Take a measurement from the Bi-Fold Door (B) excluding Wall Profiles (A) and add 60mm to the measurement of the Bi-Fold Door (**Figure D**). If the aperture is the same or greater than this measurement follow **Installation Procedure A**. If the aperture is smaller than this measurement follow **Installation Procedure B**.
Note: If using Extension Wall Profiles you will need to add an additional 35mm to the measurement above for each Extension Wall Profile used.

Installation Procedure A

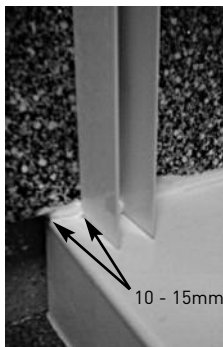


Figure a1

① Fit both Wall Profiles (A) 10 - 15mm from the front outside edge of the Tray. The lip section of the Wall Profiles should face inwards. Make sure that both Wall Profiles are completely vertical using a Spirit Level. Mark the slots with a pencil where the Wall Profiles are to be positioned.

Note: If fitting in conjunction with a Total Shower Concept Cabinet (TSC), you must fit the Wall Profiles to the outside edge of the TSC Tray.



Figure a1i

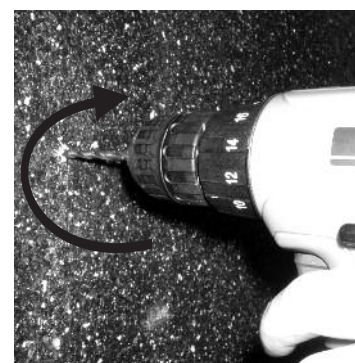


Figure a2

② Drill the wall with a 6mm Masonry Drill Bit (not supplied) where the Wall Profiles (A) are to be positioned. Fit the Wall Plugs (D) (if going into a brick or block wall). If going into a plasterboard wall you will need to purchase appropriate wall fixings. Wipe clear all debris from the Tray before referring to the next stage.



Figure a3



Figure a3i

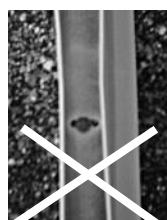


Figure a3ii

③ Where both Wall Profiles (A) are to be positioned on the Tray, place a bead of Bathroom Sealant (not supplied) the width of the Wall Profile along the tiled wall (**Figure a3i**). Screw fix the Wall Profiles to the wall with 40mm Screws (E). Do not over tighten the Screws into the Wall Profiles as this will misshape the Wall Profile (**Figure a3ii**). Ensure the Wall Profiles stay completely vertical throughout this procedure using a Spirit Level.

Note: No sealant should be present between the Wall Profiles and the tiled walls vertically prior to screw fixing.



Figure a4

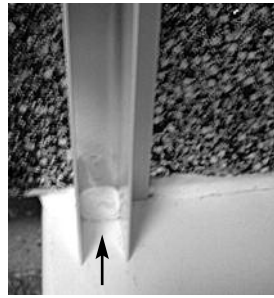


Figure a4i

④ Seal the inside gap between the Tray and Wall Profiles (A) with a Bathroom Sealant (not supplied).

Note: Failure to carry out this procedure correctly can result in serious water damage and is not covered by the Guarantee.

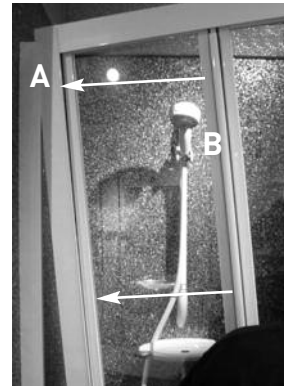


Figure a5

⑤ Assess the access required and decide left or right hand opening. Slide the Bi-Fold Door (B) following the arrows (Figure a5) into either Wall Profile channel (A) that is screw fixed to the wall. If you have selected a glass design it will be external on this product.

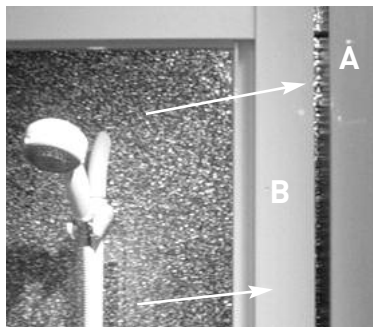


Figure a6

⑥ Once the Bi-Fold Door (B) is sitting fully inside one Wall Profile (A) (Stage 5), slide the Bi-Fold Door following the arrows (Figure a6) into the remaining Wall Profile.

Note: If using in conjunction with Side, In-Line or Neo-Angle Panel(s), please refer to the relevant Panel(s) Instruction Manual.

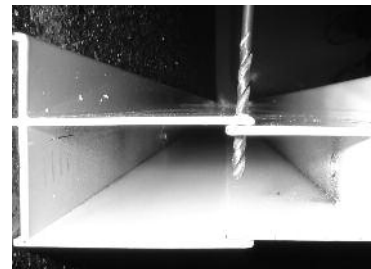


Figure a7



Figure a7i

⑦ Ensure the Bi-Fold Door (B) is sitting equally between both Wall Profiles (A), both Wall Profiles must overlap the Bi-Fold Door by at least 5mm (Figure a7). Inside the Enclosure drill three holes through both Wall Profiles into the Bi-Fold Door with a 2.5mm Drill Bit (C). The three holes should be drilled 100mm approx. from the top, 100mm approx. from the bottom and one in the centre. The Bi-Fold Door must remain completely vertical throughout this procedure.



Figure a8

⑧ Fix the 9mm Screws (G) into the Base Caps (F) then screw fix into the holes drilled with a Screw Driver. Press fit the Cover Cap (F) into place over the Screw Base Cap once the Screw is fully tightened.



Figure a9

⑨ Seal both sides of the Wall Profiles (A) vertically inside and outside only where they meet the tiles. Then seal the Enclosure to the base of the Tray from the outside only. Please allow at least 24 hours for the sealant to cure prior to using the Enclosure.

Figure a9i

⑩ Ensure the Branding Badge (H) is placed prominently on a non moving aluminium part.

Installation Procedure B

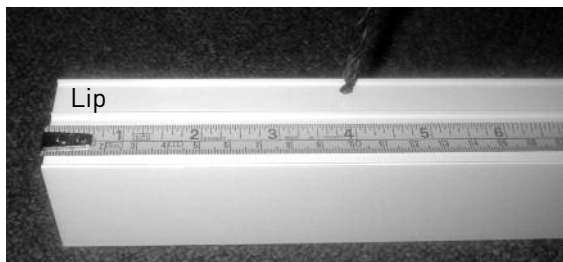


Figure b1

① Fit one Wall Profile (A) to the wall as in **Stages 1 – 4** in Installation Procedure A. Mark out and drill three holes with a 4.5mm Metal Drill Bit (not supplied) into the lip of the remaining Wall Profile, one hole approx. 100mm from the top, 100mm approx. from the bottom and one in the centre.

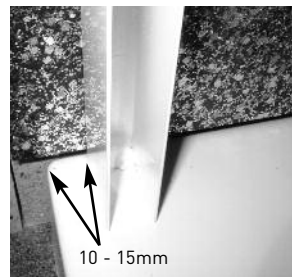


Figure b2



Figure b2i

② To align the Bi-Fold Door (B) correctly with the Tray edge, position the remaining Wall Profile (A) 10 – 15mm from the front outside edge of the Tray, ensuring this matches the Wall Profile already secured. With a pencil, mark the pre-drilled holes onto the wall ensuring that the Wall Profile stays vertical (using a Spirit Level).



Figure b3

③ Drill the wall with a 6mm Masonry Drill Bit (not supplied) where the remaining Wall Profile (A) is to be positioned. Fit the Wall Plugs (D) (if going into a brick or block wall). If going into a plasterboard wall you will need to purchase appropriate wall fixings. Wipe clear all debris from the Tray before referring to the next stage.

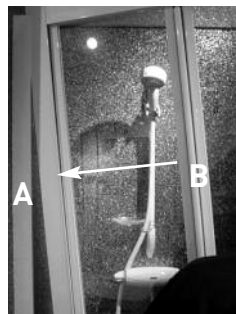


Figure b4

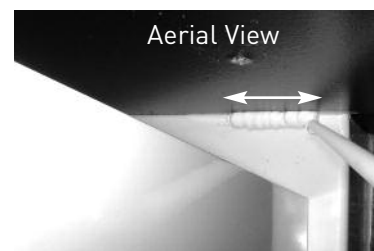


Figure b4i

④ Slide the remaining Wall Profile (A) over the Bi-fold Door (B) and then slide the Bi-fold Door into the fitted Wall Profile (**Figure b4**). Where the remaining Wall Profile is to be positioned on the Tray, place a bead of bathroom sealant (not supplied) the width of the Wall Profile along the tiled wall (**Figure b4i**).

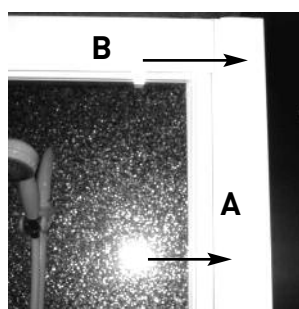


Figure b5

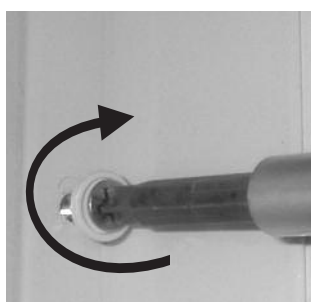


Figure b5i

⑤ Adjust the loose Wall Profile (A) to ensure that the holes drilled line up with the Wall Plugs (D). Place the 40mm Screws (E) into the Base Caps (F) and then screw fix the remaining Wall Profile to the wall with a Screwdriver (not supplied).

⑥ Now follow Stages 7 – 10 in **Installation Procedure A**.

Should you experience any problems during installation please refer to the Trouble Shooting Guide or contact Customer Relations on:

+44 (0) 1325 328033/328034

To enable customer relations to provide you with an excellent level of service it is important that you quote your Product Code and Reference Number - these numbers can be found on the guarantee card.

TROUBLE SHOOTING GUIDE.

Problem	Solution
LEAKING	<ol style="list-style-type: none">1. Check that the inside gap between the Tray and Wall Profiles have been sealed correctly (Figure a4/a4i)2. Ensure the Tray is fully sealed along the tiled walls prior to installation (Figure B).3. If the inside gap between the Enclosure and Tray is sealed, this will cause leakage – the sealant must be removed.4. Ensure the Wall Profiles on the tiled walls are sealed vertically inside and outside (Figure a9/a9i).5. Ensure the outside gap between the Enclosure and Tray is fully sealed.
ENCLOSURE ALIGNMENT ON THE TRAY	<ol style="list-style-type: none">1. Is the Enclosure fitted onto a tiled wall?2. Are the Wall Profiles fitted approx. 10 - 15mm from the front outside edge of the Tray?3. Are the Wall Profiles completely vertical?
DOORS NOT RUNNING SMOOTHLY	<ol style="list-style-type: none">1. Ensure the Enclosure is completely vertical between both Wall Profiles.
DOORS NOT FULLY CLOSING ONTO MAGNETS	<ol style="list-style-type: none">1. Check the grooves in the magnets on the doors and frame. If the grooves are facing the same way, the Enclosure will have reverse polarity. This can be resolved by easing the magnet out of the door and turning it around so that the groove is facing the other way.2. Ensure that when the door is closed against the framework that the magnets are aligned and parallel to each other.

Some important information to help you maintain your product.

The following information is all you need to keep your product looking new.

Clean your product using a mild detergent diluted in water and then polished off using a soft cloth.

If you live in a hard water area, periodically clean your product using a 50/50 solution of white vinegar and water. The solution should be left on the enclosure for approximately 5 minutes then rinsed off using warm water. This method of cleaning should remove lime scale residue.

Simple maintenance.

Our products are generally maintenance free, however it may be necessary to lubricate wheel assemblies and other moving parts from time to time.

It is strongly recommended that a quality silicone spray is used.

A list of Don'ts:

- 1 - Don't use acidic based products which are unsuitable for cleaning enamel surfaces.
- 2 - Don't use Abrasive cleaners or cleaners containing bleach or solvents, these products will adversely affect the finish of the aluminium profiles.
- 3 - Don't use scouring pads, powder or any sharp instruments when cleaning the enclosure.