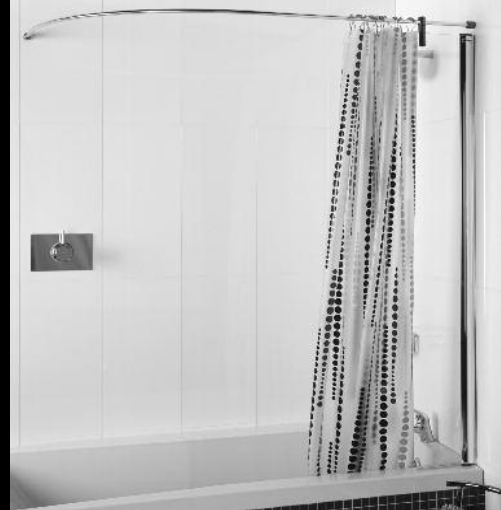


# Mini Fixed Bath Screen

## Instruction Manual

CC4



### Consumer Guarantee

Please make sure the purchaser/end user completes and returns the Guarantee card which is enclosed with this product. Failure to validate the Guarantee will mean only the 1 Year Statutory Guarantee will apply.

### IMPORTANT

- Please ensure the consumer guarantee card enclosed with this product is completed and returned; please ensure the end user retains this manual.
- Please read these instructions carefully prior to attempting installation.
- Unpack and handle the product with care to avoid damage to the product finish.
- Check for hidden electrical cables and water pipes prior to commencing any drilling work.
- Ensure the walls where the Bath Screen is to be fitted are vertical (if walls are not completely vertical there is 15mm of adjustment within the Wall Profile). **Note:** It is recommended that the walls are tiled after the Bath is fitted and grouted before fitting the Bath Screen. This will help provide maximum adjustment and will aid sealing.
- No attempt should be made to rework toughened safety glass.
- Pictures used are for illustration purposes only; product designs may alter slightly as a result of continuing product development.
- The Mini Fixed Bath Screen is designed for a shower head to be positioned only at the end of the bath - ensuring the spray is aimed down the full length of the bath at all times.
- Suitable only for all standard Bath Mixers and Electric Showers (non-pumped).

### Component Check List: Supplied

Ref	Description	Quantities
A	Wall Profile	1
B	Mini Fixed Bath Screen	1
C	Curtain Rail	1
D	Support Bracket with Spacers	1
E	Wall Mounting Brackets	2
F	In-Fill Trim	1
	Fitting Pack	
G	2.5mm Drill Bit	1
H	40mm Screws	5
I	9mm Screws	3
J	Wall Plugs	5
K	Branding Badge (where applicable)	1
L	Allen Key	1

### Equipment Checklist: Not Supplied

Electric Drill
6mm Masonry Drill Bit
Bathroom Sealant Gun
Bathroom Sealant Tube
Screwdriver
Spirit Level
Tape Measure
Pencil
Wall Plugs (Plasterboard)

### Before Assembly and Installation of the Mini Fixed Bath Screen

- Check to see that you have the correct Bath Screen for your bath. This can be done by referring to the label on the side of the product packaging.
- Ensure all parts are in the packaging by checking them against the parts and quantities shown on the component check list above.
- Check the product for defects. Installation queries on damaged parts can not be resolved once the installation has been completed.
- The Bath must be completely sealed along tiled walls, fitted level (check with a Spirit Level) and should have no leaks.

**Notes:** It is recommended that the Wall Profile be fitted directly onto tiles or a similar sealed surface. If walls or Bath or a combination of both are out of level you will not achieve full adjustment of maximum width. We do not stipulate where the British Standard Safety Kite Mark should be positioned on the glass panels when being factory assembled.



Figure A

**1.** Ensure the Bath is completely level - check for any movement in the Bath by standing in it. Fill the Bath with water to check all plumbing for leaks.

**Note:** Please ensure the Bath is installed as per Manufacturer's Instructions.



Figure B

**2.** Fill the Bath with water and fully seal the Bath along the tiled walls with a Bathroom Sealant (not supplied). Once the Bath is fully sealed you must leave for at least 24 hours prior to commencing installation of the Mini Fixed Bath Screen.

**Note:** Prior to commencing installation of the Bath Screen and once the sealant has cured, spray the shower handset around all joints to check for leaks.

## Mini Fixed Bath Screen

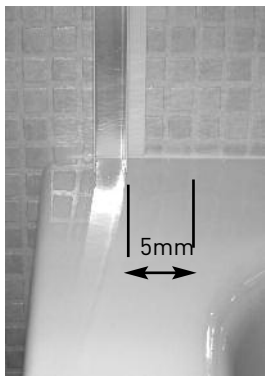


Figure a1



Figure a1i

**1.** Decide which side of the Bath you want your Mini Fixed Bath Screen (B) to be positioned. Fit the inner edge of the Wall Profile (A) 5mm in from the inside edge of the Bath (Figure a1). Ensure the Wall Profile is completely vertical using a Spirit Level. Mark the holes with a pencil where the Wall Profile is to be positioned (Figure a1i).



Figure a2

**2.** Drill the wall with a 6mm Masonry Drill Bit (not supplied) where the Wall Profile (A) is to be positioned. Fit the Wall Plugs (J) (if going into a brick or block wall). If going into a plasterboard wall you will need to purchase appropriate wall fixings. Wipe clear all debris before referring to the next stage.

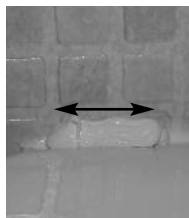


Figure a3

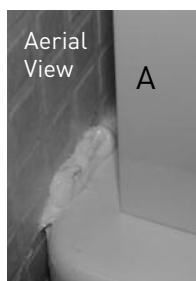


Figure a3i

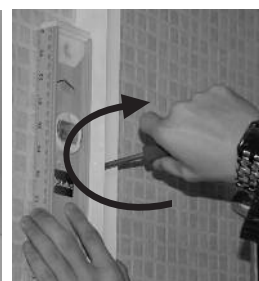


Figure a3ii

**3.** Where the Wall Profile (A) is to be positioned onto the Bath, place a bead of Bathroom Sealant (not supplied) the width of the Wall Profile along the tiled wall (Figure a3/a3i). Screw fix the Wall Profile to the wall using the 40mm Screws (H). Ensure the Wall Profile stays completely vertical throughout this procedure using a Spirit Level (Figure a3ii).

**Note:** No Bathroom Sealant should be present between the Wall Profile and the tiled wall vertically prior to screw fixing.



Figure a4

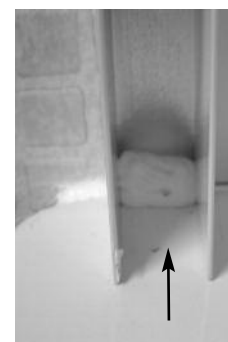


Figure a4i

**4.** Seal the gap between the Bath and the Wall Profile (A) with a Bathroom Sealant (not supplied) (Figure a4/a4i).

**Note:** Failure to carry out this procedure correctly can result in serious water damage and is **not** covered by the 10-year manufacturer's guarantee.

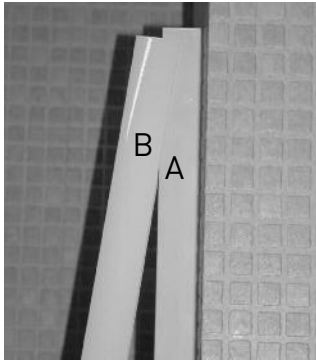


Figure a5

**5.** Slide the Mini Fixed Bath Screen (B) over the top of the Wall Profile (A) (Figure A5).

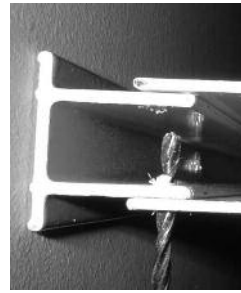


Figure a6



Figure a6i

**6.** Ensure the Mini Fixed Bath Screen (B) overlaps the Wall Profile (A) by at least 5mm (Figure a6). Inside the Bath drill three holes through the Mini Fixed Bath Screen into the Wall Profile with the 2.5mm Drill Bit (G). The three holes should be drilled through the Mini Fixed Bath Screen in the pre-drilled holes into the Wall Profile. The Mini Fixed Bath Screen must remain completely vertical throughout this procedure using a Spirit Level (not supplied) (Figure a6i).



Figure a7

**7.** Screw fix the 9mm Screws (I) into the holes drilled in Stage 6. Ensure the Screws are fully tightened with a Screwdriver (Figure a7).

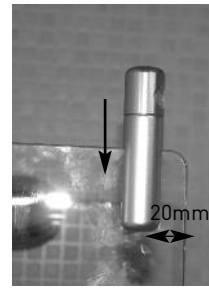


Figure a8



Figure a8i

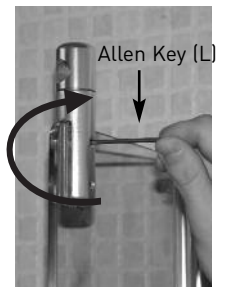


Figure a8ii

**8.** Position the Support Bracket (D) over the top of the Mini Fixed Bath Screen (B) approximately 20mm from the outside edge of the Bath (Figure a8). Slide the Spacers (D) in-between the glass and the Support Bracket (Figure a8i). This will ensure no aluminium touches the glass of the Mini Fixed Bath Screen. Using the Allen Key (L), tighten the screws on the Support Bracket. The two screws are accessible from the inside of the Bath (Figure a8ii).

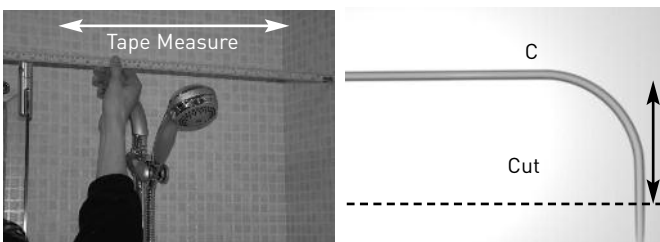


Figure a9

Figure a9i

**9.** Using a Tape Measure, accurately measure the distance between the outside edge of the Support Bracket (D) to the opposite wall. Whilst taking this measurement ensure the Mini Fixed Bath Screen (B) remains completely vertical using a Spirit Level (Figure a9). Using this measurement, measure the same distance on the shorter side of the Curtain Rail (C) and mark with a pencil on to the Curtain Rail. At the point marked, cut through the Curtain Rail using a Hack Saw (not supplied) (Figure 9i).

*Tip: To help you measure the Curtain Rail accurately, place the Curtain Rail against a Wall with a right angle.*

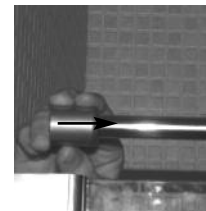


Figure a10



Figure a10i



Figure a10ii

**10.** Slide the Curtain Rail (C) through the Support Bracket (D). Push the Wall Mounting Bracket (E) onto the end of the Curtain Rail (Figure a10). Ensure the Curtain Rail is completely level and in-line with the top of the Mini Fixed Bath Screen (B) (Figure a10i). Using a pencil, mark on the wall the position where the Wall Mounting Bracket is to be positioned (Figure a10ii).



Figure a11

Figure a11i

Figure a11ii

**11.** Remove the Wall Mounting Bracket (E) from the end of the Curtain Rail (C). Where the Wall Mounting Bracket is to be positioned, mark through the hole with a pencil (Figure a11). Drill the wall with a 6mm Masonry Drill Bit (not supplied) (Figure a11i). Fit the Wall Plug (J) if going in to a brick or block wall (if going in to a plasterboard wall you will need to purchase appropriate fixings). Wipe clear all debris. Using a Screwdriver, screw fix the Wall Support Bracket with a 40mm Screw (H) (Figure a11ii).

**12.** Position the remaining Wall Mounting Bracket (E) onto the short end of the Curtain Rail (C) then follow the same procedure as in Stages 10 and 11 to screw fix to the wall.

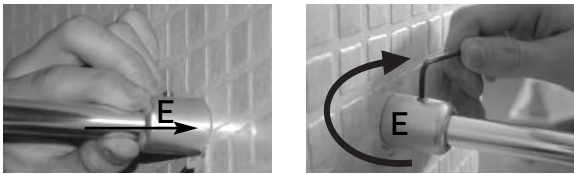


Figure a13

Figure a13i

**13.** Slide the Curtain Rail (C) through the Support Bracket (D), insert the Curtain Rail into both Wall Mounting Brackets (E) (Figure a13). To secure the Curtain Rail in to the Wall Mounting Brackets, tighten the locking screw into the Curtain Rail using the Allen Key (L) (Figure a13i). Ensure both Locking Screws are fully tightened.

**Note:** Prior to Fitting the Curtain Rail slide the Shower Curtain Rings onto the Curtain Rail.

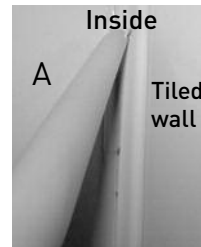


Figure a14

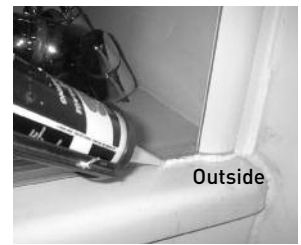


Figure a14i

**14.** Seal both sides of the Wall Profile (A) vertically, inside and outside only where they meet the tiles (Figure a14/a14i) Then fully seal the Mini Fixed Bath Screen (B) along the Bath top from the outside only (Figure a14i).

**15.** Ensure the Branding Badge (K) (if applicable) is placed prominently on a non-moving aluminium part (Figure a15/a15i).



Figure a16

**16.** Once the Bathroom Sealant has cured, press fit the Coloured In-Fill Trim (F) into the vertical groove of the Mini Fixed Bath Screen (B) (Figure a16) to conceal the 16mm Screws (I) that were screw fixed in Stage 7.

Should you experience any problems during installation please refer to the Trouble Shooting Guide or contact Customer Relations on:

**+44 (0) 1325 328033/328034**

To enable customer relations to provide you with an excellent level of service it is important that you quote your Product Code and Reference Number - these numbers can be found on the guarantee card.

## Trouble Shooter Guide

Problem		Solution
Leaking	①	Check the gap between the Bath and the Wall Profile has been sealed correctly (Figure a4/a4i).
	②	Ensure the Bath is fully sealed along the tiled walls prior to installation (Figure B).
	③	If the Mini fixed Bath Screen is sealed on the inside along the Bath top, this will cause leakage – the sealant must be removed.
	④	Ensure the Wall Profile on the tiled wall is sealed vertically inside and outside where it meets the tiles only (Figure a14/a14i).
	⑤	Ensure the outside gap between the Mini Fixed Bath Screen and Bath top is fully sealed (Figure a14i).
	⑥	Is the Wall Profile fitted 5mm approx. from the inside edge of the Bath top (Figure a1/a1i)?
Mini Fixed Bath Screen alignment on Bath	①	Is the Mini Fixed Bath Screen fitted onto a tiled wall?
	②	Is the Wall Profile fitted 5mm approx. from the inside edge of the Bath top (Figure a1/a1i)?
	③	Is the Wall Profile completely vertical?

### Some important information to help you maintain your product.

The following information is all you need to keep your product looking new.

Clean your product using a mild detergent diluted in water and then polished off using a soft cloth.

If you live in a hard water area, periodically clean your product using a 50/50 solution of white vinegar and water. The solution should be left on the enclosure for approximately 5 minutes then rinsed off using warm water. This method of cleaning should remove lime scale residue.

#### Simple maintenance.

Our products are generally maintenance free, however it may be necessary to lubricate wheel assemblies and other moving parts from time to time.

It is strongly recommended that a quality silicone spray is used.

#### A list of Don'ts:

- 1 - Don't use acidic based products which are unsuitable for cleaning enamel surfaces.
- 2 - Don't use Abrasive cleaners or cleaners containing bleach or solvents, these products will adversely affect the finish of the aluminium profiles.
- 3 - Don't use scouring pads, powder or any sharp instruments when cleaning the enclosure.