

## Malleable Iron

Options:



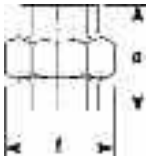
Galvanised



Black

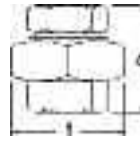
### 289 Union PN25

SPHERICAL  
SEAT -  
Bronze to Bronze



FITTING SIZE	DIMENSIONS (mm)		WEIGHT (kg) per 100 pieces
	a	f	
1/4	42	32	10.91
3/8	45	36	14.98
1/2	49	42	20.97
3/4	53	49	30.44
1	58	57	40.99
1 1/4	64	68	61.13
1 1/2	68	76	79.78
2	75	92	121.54
2 1/2	84	111	187.72
3	92	125	248.02

### 290 Union PN25

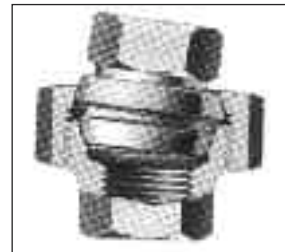


FITTING SIZE	DIMENSIONS (mm)		WEIGHT (kg) per 100 pieces
	a	f	
1/2	49	44	22.96
3/4	52	48	28.66
1	57	55	37.44
1 1/4	67	67	60.00
1 1/2	78	76	94.48
2	87	90	134.79

#### The Crane SA (Self Aligning Union)

The Crane SA Union is made with double spherical seats. Pipes which are not in alignment can be securely connected at any angle up to 6° of arc from centre line of the union, thus avoiding the need for offsets. The union provides a pressure tight joint without the use of gaskets or washers.

- Self aligning (SA) Union
- Double spherical seats
- Iron to iron seating
- Taper threads to BS 21 (ISO 7-1)
- Black or Galvanised



SA Union - female



6° out of alignment and still pressure tight

Every effort has been made to ensure that the information contained in this publication is accurate at the time of publishing. Crane Ltd assumes no responsibility or liability for typographical errors or omissions or for any misinterpretation of the information within the publication and reserves the right to change without notice.