



TRIANCO

The Heating Creators

Aztec

Versatile Electric Heating Solutions



Aztec Electric Boilers

Aztec electric boilers have powered thousands of homes across the UK over the years and remain one of the most popular ranges available in the Trianco portfolio of heating products.

Designed with precision and engineered to perfection the range is produced to a superb standard that is expected of a British manufacturer. Aztec is the preferred choice for many households that have no mains gas supply or are seeking an alternative to fuels such as oil or LPG.

Aztec is a compact heating system that requires no flue or fuel supply tank. With a minimum noise level and an efficiency of 99.8%, it can work effectively alongside any renewable technology and can provide ample supply to radiators just like any other conventional boiler.

Aztec Classic - a superb heating choice

Available in outputs of 2kW-12kW the Aztec Classic is a wall mounted system designed with practicality in mind. It can be installed in any type of property i.e. house, flat, mobile home or apartment and is particularly popular in retrofit and new build situations. Its slim vertical design means Aztec Classic can fit into the smallest of spaces and can even be sited in a small airing cupboard alongside a cylinder.

Aztec Combi - the ultimate space saving solution

Ideal where space is at a premium this compact boiler means there is no need for extensive pipework, flue kit or additional cylinder for hot water storage. The Combi can sit neatly and discreetly under work-surface height units. The Aztec Combi is fully controlled via supplied digital programmer.

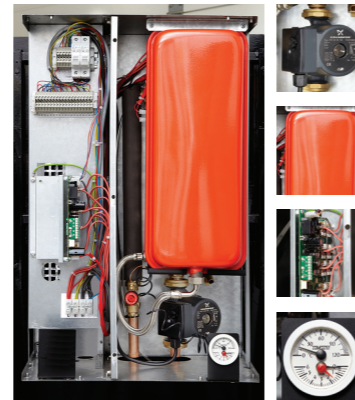
Aztec System - an all in one, fit and forget solution

The Aztec System series, available in outputs from 6kW-12kW is a neat whole heating solution that is perfectly engineered to incorporate pump, auto air vent, expansion vessel and pressure gauge. As a result there is no need for additional or unnecessary external plumbing or pipework. The Aztec System is fully controllable via a supplied digital programmer.

New and improved PCB

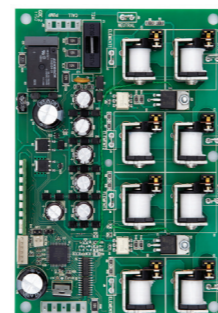
Aztec boilers feature specifically designed state of the art, printed circuit boards (PCB). Providing full modulation, it controls the continuous supply of an optimum output for the systems demand. The full controllability through all heating cycles ultimately reduces running costs.

An external temperature control adjustment is also displayed (ranging from 35° to 75°). Dry fire and overheat monitoring fully protects the elements and a full diagnostic remote fault finding feature is available.



System and Combi featured components

- Expansion Vessel
- Pump
- PCB
- Pressure Gauge
- Pressure Release Valve (Combi)
- Automatic Air Vent (Combi)
- Plate Heat Exchanger (Combi)



Features & benefits

- State of the art bespoke PCB
- Fully modulating
- Can be installed almost anywhere
- Outputs up to 12kW
- External temperature control
- No flue or fuel supply tank required
- No noxious gases
- Easy to install
- Virtually maintenance free
- 99.8% efficient
- Replaceable elements
- Self diagnostic checking
- Soft switching to preserve element life and prevent interference
- Resettable thermal safety cut-out
- Compatible with solar power
- Comprehensive 2 year guarantee

Dimensions & Specification

Aztec Classic

Model	Output kW	H mm	D mm	W mm	Weight Kg	Water Content Litres
Aztec-2	2	165	143	550	7.0	1.0
Aztec-6	6	165	143	825	8.1	2.1
Aztec-9	9	165	143	1080	10.6	3.2
Aztec-11	11	165	143	1080	10.8	3.2
Aztec-12	12	165	143	1080	10.8	3.2

Aztec System

Model	Output kW	H mm	D mm	W mm	Weight Kg	Water Content Litres
Aztec-6	6	455	290	700	25	7
Aztec-9	9	455	290	700	25	7
Aztec-11	11	455	290	700	25	7
Aztec-12	12	455	290	700	25	7

Aztec Combi

Model	Output kW	H mm	D mm	W mm	Weight Kg	Water Content Litres
Aztec Combi 6-12	6	1140	552	732	128	69

Typical Application



Apartments & Family Homes

Mobile Homes & Caravans

Flats



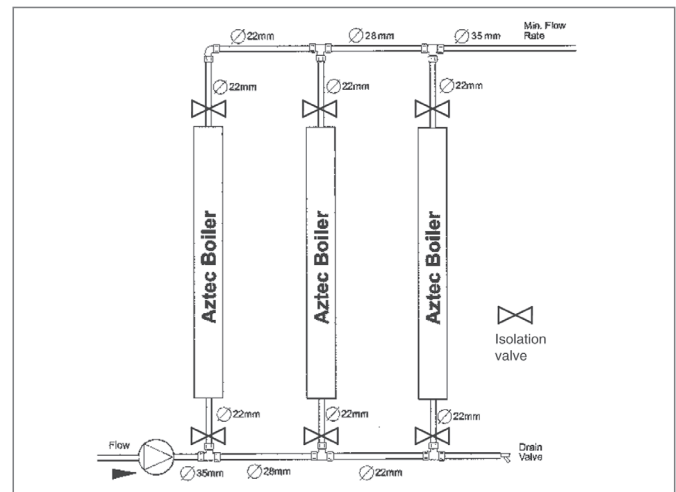
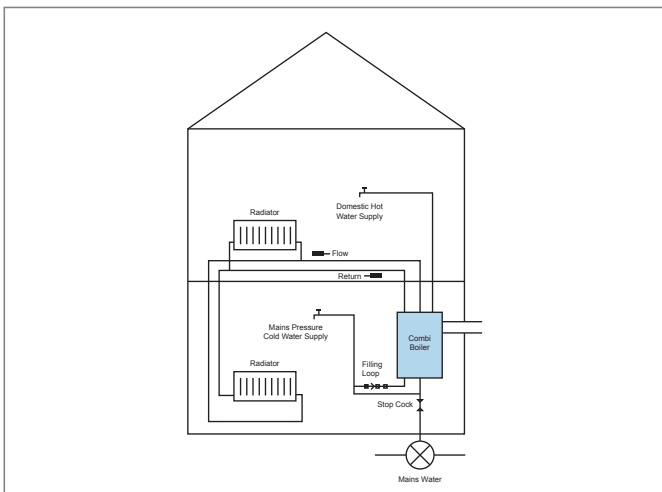
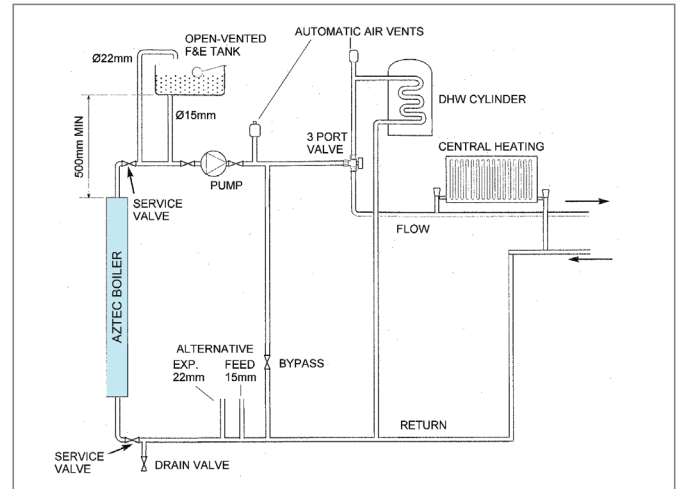
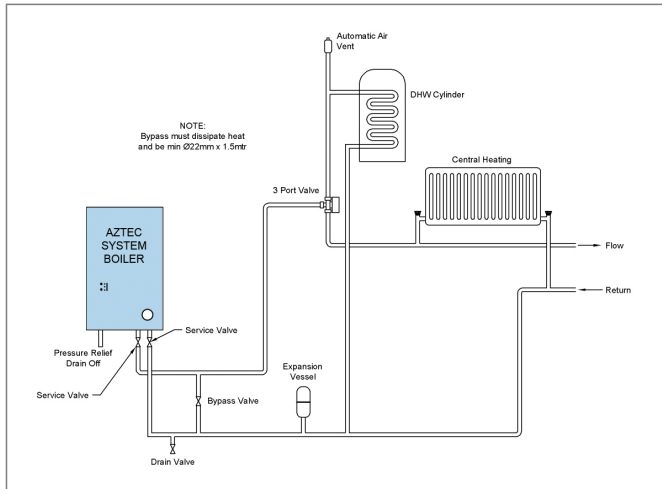
Aztec Combi (shown above) - the ultimate space saving solution

- Delivers DHW up to 16 ltr per/min
- Omits the need for a cylinder
- Supplied complete with external programmer
- Designed for install in a utility room or airing cupboard



Horstman Controller

Typical system layouts



The ranges versatility is demonstrated further by the way several units can be linked together to give a greater output, depending on the power supply available.

TR Engineering Limited
 Thorncliffe, Chapelton, Sheffield S35 2PH
 Telephone: +44 (0)114 257 2300
 Fax: +44 (0)114 257 1419
 Email: info@trianco.co.uk
 Web: www.trianco.co.uk

TR Engineering Limited is a company registered in England and Wales Registration no. 7321802



TRIANCO
 The Heating Creators

Copyright of all contents of this leaflet is vested in TR Engineering Limited. Any part may not be reproduced without permission. The contents of this leaflet are accurate at the date of printing but, because TR Engineering has a policy of continual development, it may be superseded and should be disregarded if specifications or appearances are changed. The statutory rights of the customer are not affected. E&OE's.



XC990826 02/15 ISSUE 3