

RADA S.PA 1 SHOWER PANEL



- Pre-plumbed shower panel with electronic timed flow control for connection to a pre-blended supply
- Water & Energy Saving - Shower will automatically stop after pre-programmed time – prevents users leaving running
- BREEAM compliant flow rates
- Aids Legionella Control Compliance – Automatic Duty Flush can be selected to ensure water is not left standing in supply pipes
- Panel can be programmed to suit site preferences – Select from a choice of shower run times, duty flush intervals & duty flush run times
- Robust Construction - tri-laminate acrylic capped resin stone casing, resistant to water staining
- Panel powered by Hybrid Energy System - eliminating need for regular battery replacement (mains power not required), offering up to 10 years life
- WRAS Approved



**Specify as: Rada S.PA 1 Shower Panel – Silver
(1.1776.001)**

Ready to install slimline shower panel manufactured from a stain resistant acrylic resin stone with a silver finish, single pipe entry for connection to a pre-blended supply, offering programmable shower times, automatic duty flushing and duty flush run times.

**Specify as: Rada S.PA 1 Shower Panel – White
(1.1776.002)**

Ready to install slimline shower panel manufactured from a stain resistant acrylic resin stone with a white finish, single pipe entry for connection to a pre-blended supply, offering programmable shower times, automatic duty flushing and duty flush run times.

Kohler Mira Limited
Cromwell Road
Cheltenham
Gloucestershire
GL52 5EP

Specification Enquiries
Tel: 0844 571 1777
Fax: 0844 472 3076
Email: rada_technical@mirashowers.com
www.radacontrols.com

TECHNICAL SPECIFICATION

Description

The Rada S.PA 1 is a robust, timed flow shower panel, offering a range of programmable timed flow options.

It is powered by Rada’s Hybrid Energy System, which comprises two key components:- a high energy battery and an internal capacitor. The capacitor stores energy which protects the battery from high current draws and helps to preserve its operating life for up to 10 years (a mains supply is not required).

Installation and Maintenance

Please refer to the appropriate Product Manual.

Quick and easy to install and service. Each panel supplied with a 15mm isolating ball valve on the inlet as standard. All components that require routine test and maintenance are easily accessible.

Connections

Inlet: 15 mm compression to blended water inlet pipe.

Approvals

WRAS approved (Water Regulations Advisory Scheme). Designed, manufactured and supported in accordance with accredited BS EN ISO 9001:2008 Quality Management Systems and BS EN ISO 14001:2004 Environmental Management Systems.

Operation

The flow cycle is activated when the user presses the electronic button. The Panel is pre-programmed to automatically turn off after 30 seconds, to aid water and energy saving.

The flow can be stopped at any time by pressing the button again.

Alternative flow durations are available but require programming – refer to Programming section.

Panel Programming Options

The Rada S.PA 1 Shower Panel features 3 pre-programmed functions and will operate without the need for any additional programming.

Additional options are available to allow fine tuning to specific site requirements. The range of options available is shown below (default settings identified)

Function	Time Setting			
	20	30*	60	120
Shower Run Time (secs)	20	30*	60	120
Duty Flushing Interval (hrs)	24	48	72*	Disable
Duty Flush Run Time (mins)	1*	2	3	5

* Denotes default setting

Additional programming options are also available to change the default ‘smart’ duty flush (will only flush if the product has not been used within the programmed duty flush period) to ‘fixed’ period duty flushing (will flush at the duty period selected, irrespective of last use).

Materials

Panel Case: Tri-laminate casing manufactured from a stain resistant acrylic resin stone.

Shower Spray Plate: Copolyester

Control Button: Chrome Plated Brass

Battery: High Energy Lithium Metal Battery – fully insulated (warning: fire, explosion and severe burn hazard. Do not recharge, disassemble, heat above 100°C, incinerate or expose contents to water)

Temperature Range

Maximum recommended temperature (if thermal disinfection used): 80 °C

Pressures

Minimum maintained pressure: 1.0 bar (2.0 bar with 3.0 lit/min regulator fitted)

Maximum maintained pressure: 5.0 bar

Maximum static pressure: 10.0 bar

Application

Leisure - A stylish profile with electronic button to enhance customers’ showering experience, while programmable flow settings save water and energy.

Education - Flush wall mounting and durable tri-laminate casing make Rada S.PA 1 more than a match for the demands of school and college life.

Transport Information

UN 3091: Lithium Metal Batteries contained in equipment, Class 9 Packing Group II

High Energy Battery Disposal Considerations



Should you find that you either need to replace the complete Shower Panel or the High Energy Battery, do not dispose of the High Energy Battery into landfill or incineration.

You can return any high energy batteries, which have reached the end of their working life, to Kohler Mira at the address below and we will ensure they are responsibly recycled:-

Kohler Mira Ltd

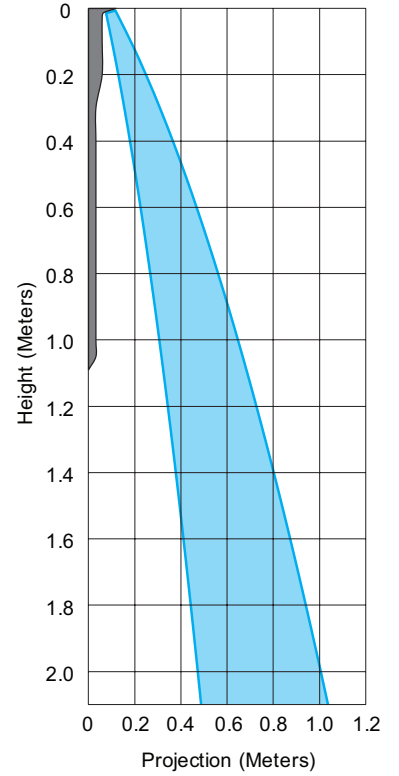
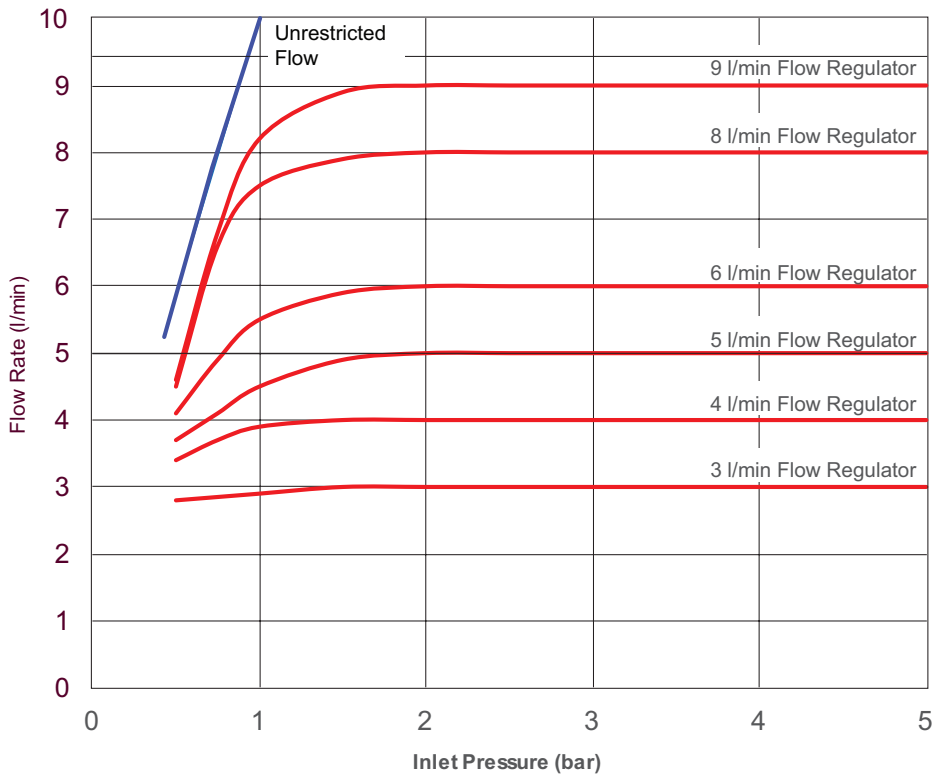
Customer Returns Dept
Cromwell Road, Cheltenham
Gloucestershire
GL52 5EP

Please note that the High Energy Battery must be packaged and returned in accordance with Class 9 Dangerous Goods requirements.

Alternatively, the High Energy Battery should be disposed of through an approved battery treatment operator.

TECHNICAL SPECIFICATION

Flow Diagram



6 l/min flow regulator fitted from factory.
 9 l/min flow regulator also supplied with S.PA 1 Panel

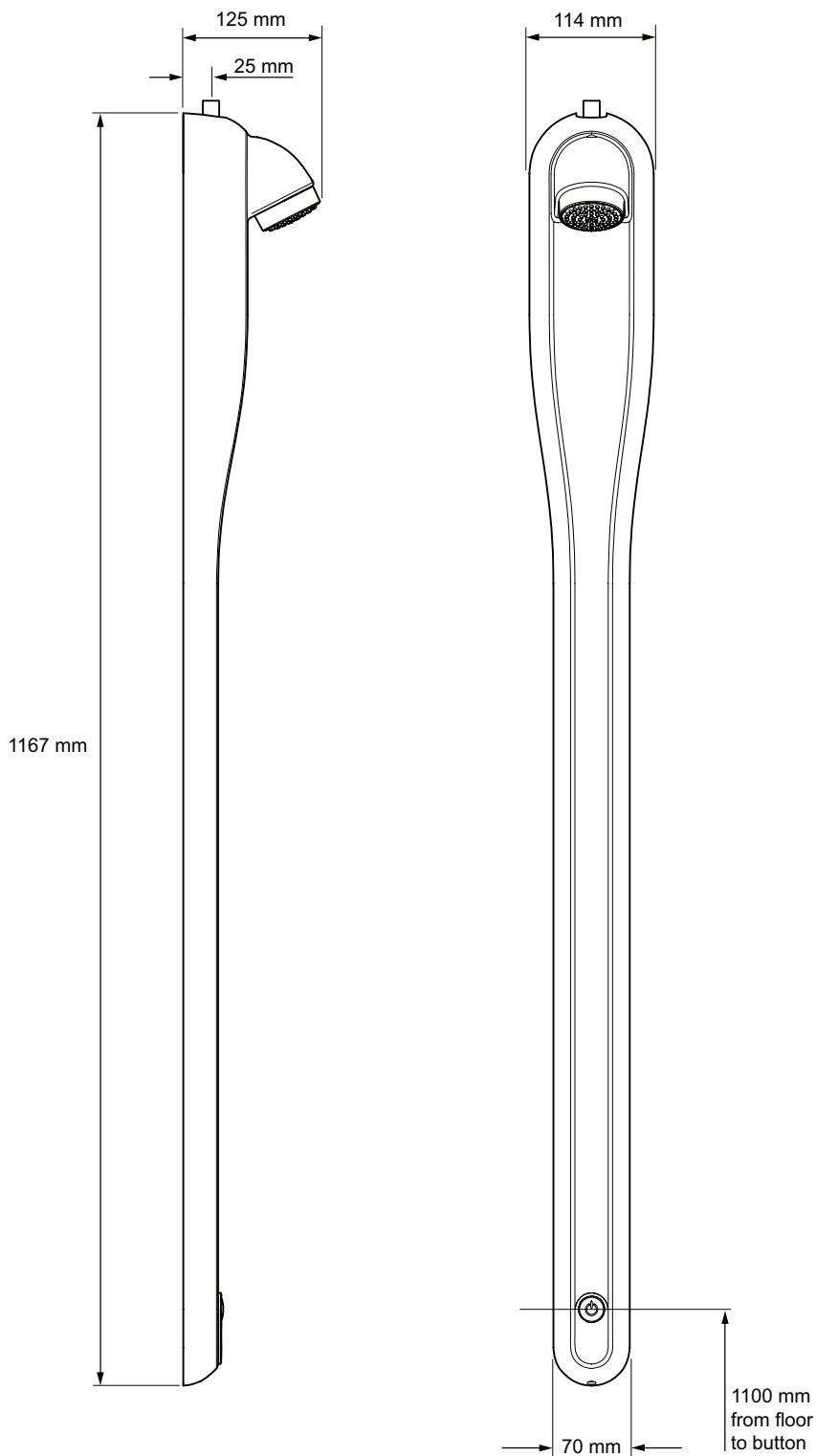
Optional Flow Regulator	Part Number
3 l/min	1776.183
4 l/min	1776.184
5 l/min	1776.185
8 l/min	1776.180

Weight

Product	Net Weight (Kgs)	Total Packaged Weight (Kgs)
Rada S.PA 1 Shower Panel - Silver	4.1	5.1
Rada S.PA 1 Shower Panel - Whiter	4.1	5.1

TECHNICAL SPECIFICATION

Dimensions (mm)



Kohler Mira Limited
Cromwell Road, Cheltenham
Gloucestershire, GL52 5EP

Specification Enquiries
Tel: 0844 571 1777, Fax: 0844 472 3076
Email: rada_technical@mirashowers.com
www.radacontrols.com

Rada is a registered trademark of Kohler Mira Limited.
The company reserves the right to alter product specification without notice.
© November 2013 Kohler Mira Limited. All rights reserved.
No part of this document, or any accompanying document, may be reproduced or transmitted in any form or by any means, including photocopying or electronically, without the permission of Kohler Mira Limited.

A **KOHLER** COMPANY



FM 14648

